

# *On the* **JOB**<sup>TM</sup>

SKID STEER LOADERS

MULTI TERRAIN LOADERS

COMPACT TRACK LOADERS

HYDRAULIC EXCAVATORS

BACKHOE LOADERS

WHEEL LOADERS

TELEHANDLERS

WHEEL EXCAVATORS

DOZERS

TRACK LOADERS

ATTACHMENTS

## **2018 BUYERS'** **GUIDE**

///SPECIAL ISSUE



# INTRODUCING THE NEW & IMPROVED **PETERSONUSED.COM!**

**PETERSON** **CAT** Enter Search Here Phone: 888-Peterson

HOME MACHINERY AG EQUIPMENT POWER SYSTEMS TRUCKS CONTACT US

MACHINERY AG EQUIPMENT POWER SYSTEMS TRUCKS

SEARCH OUR INVENTORY Enter Search Here

Up to **140** inspection points and superior machine condition

**CONTACT US**  
Name: \*  
Email: \*  
Message: \*  
Click to Enter Captcha  
SUBMIT

**DETAILED EQUIPMENT SEARCH**

Location: Any  
Category: All  
Manufacturer: Any  
Model:  
Year Min:  
Year Max:  
Price Min:  
Price Max:  
Capacity Min:  
Capacity Max:  
Hours Min:  
Hours Max:  
Serial Number:  
Stock Number:  
SEARCH

©2016 PETERSON CAT Cat.com Site Hosted by MachineryTrailer.com © Copyright by Sanitella Publishing Company

Visit **petersonused.com** today for all your used equipment needs.

Browse our entire heavy equipment inventory online: low-hours used Cat<sup>®</sup> machines and gensets, agricultural equipment from Challenger and other top manufacturers, and International trucks!

Visit **petersonused.com** today!





# CONTENTS

## RELIABLE MACHINES YOU CAN DEPEND ON

Welcome to the 2018 annual *On the Job Buyers' Guide*, compliments of our dealership. It lists the complete line of proven Cat Building Construction Products, attachments and more, all in one, easy-to-access guide. Use the handy QR codes in each section to link to more information on the Cat website.

Please refer to this product guide all year long, and be sure to contact our dealership to learn more about any of these products whenever you have a need.

## BUILT FOR IT.™



- 04** TECHNOLOGY SOLUTIONS
- 06** LEASE OR OWN
- 07** DEALER SUPPORT
- 08** SKID STEER LOADERS
- 10** MULTI TERRAIN LOADERS
- 11** COMPACT TRACK LOADERS
- 12** HYDRAULIC EXCAVATORS
- 14** BACKHOE LOADERS
- 16** WHEEL LOADERS
- 18** TELEHANDLERS
- 19** WHEEL EXCAVATORS
- 20** DOZERS
- 22** ATTACHMENTS
- 26** TRACK LOADERS

*On the Job*™ is published by High Velocity Communications Inc. on behalf of your Cat Dealer. Publisher, Mark Sell • Editor, John Rondy • Associate Creative Director, Jay Blazek • Art Director, Jason France • Director of Client Services, Kelly Pemper. Every attempt has been made to ensure specifications are accurate. Because specifications are subject to change without notice, check with us, your Cat Dealer, for the latest information. Some photography provided courtesy of Caterpillar Inc. CAT, CATERPILLAR, their respective logos and "Caterpillar Yellow," and the "POWER EDGE" trade dress, BUILT FOR IT, as well as corporate and product identity used herein, are trademarks of Caterpillar and may not be used without permission. High Velocity Communications Inc., 1720 Dolphin Dr., Suite D, Waukesha, WI 53186-1489. *On the Job* is a trademark of High Velocity Communications Inc. Phone 262.544.6600. Submit address corrections and changes via email to: Kelly@HighVelocityCommunications.com. ©2018 High Velocity Communications Inc. All rights reserved. Printed in the U.S.A. **Volume 9 Number 1.**

# Boost Your Bottom Line

## EQUIPMENT MANAGEMENT IMPROVES MARGINS



Scan the QR Code with your smart phone to learn more about our **Cat® Technology Services**.

### LEARN MORE

Visit [www.cat.com/EMServices-en-in](http://www.cat.com/EMServices-en-in) or contact our dealership to learn how EM Services can help you get more value from your equipment on every job, every day.

The cyclical nature of the construction industry makes maintaining margins a constant challenge. In lean times, margins are squeezed as more companies bid for fewer jobs. The rising costs of capital and materials, along with the shortage of skilled operators, also chip away at potential profits.

Effective equipment management can do a lot to reduce costs, boost efficiency and substantially improve your bottom line.

## What is Equipment Management?

Regardless of the number of machines you run, the equipment management equation is pretty simple—it boils down to monitoring and using your equipment as efficiently as possible to ensure that it delivers the maximum amount of work for the lowest possible cost.

It sounds simple, but achieving that goal requires focusing on several key factors:

**Machine Performance:** Well-maintained machine systems work to the best of their capabilities, delivering more work at lower operating costs.

**Machine Health:** A healthy machine spends less time in the shop and delivers more reliable performance, when you need it, without surprises.

**Machine Operation:** Proper machine operation can reduce wear, and minimize idling time which saves on fuel costs.

**Planned Maintenance and Repairs:** Adhering to a recommended maintenance program helps you identify and fix small problems before major failures occur, reducing unscheduled downtime and disrupted production.

**Safety and Security:** Equipment that's well managed has less risk of being involved in accidents, and carefully tracking machine locations and usage ensures that machines aren't stolen or used without authorization.

## Technology Makes It Simple

Technologies built into today's construction equipment make it easy to gather accurate, up-to-the-minute information about your equipment. Where it is. How well it's working. When it's due for service. If there's something wrong with a machine system. If it's being misused somehow.

And that information, in the form of electronic equipment data can be transmitted right to you via VisionLink®, web or mobile. You don't need to have someone go get it. And you don't have to spend precious time crunching numbers because a lot of the analysis is done automatically by advanced VisionLink software.

In the end, what you get is useful information that lets you make decisions faster. Decisions based on facts, not guesswork. Decisions that can help you improve your business.

## Equipment Management Benefits

The benefits of equipment management help your company achieve three important business objectives:

**Control Costs:** When you can see what your real costs are, you can take steps to bring them down. Monitoring technologies can help by:

- Precisely identifying problems
- Prioritizing and streamlining tasks
- Providing data that helps you better manage direct expenses such as labor, fuel, maintenance and repairs
- Offering reporting functions, where you can find and eliminate excess idle time to reduce your total fuel costs

Accurate cost tracking can also give you the foundation for analyzing repair and maintenance and determining the optimum time for major overhauls or replacements.

**Improve Operations:** When you know exactly where your machines are and

when they're due for maintenance, you can make better, more informed operational decisions.

Equipment management helps you:

- Improve efficiencies by monitoring productive work time, machine utilization, logistics, equipment wear and tear, and the responsiveness of your team
- Determine when to bring a machine in for service or preventive maintenance
- Decide how you should move your fleet around between jobs so your equipment is in the right place at the right time

**Manage People:** Any equipment management program has to take into account the knowledge and habits of the people most aware of the needs of the machine—the operators.

As the first line of defense for your equipment, operators need to be fully aware of how their actions impact your fleet.

Information from Cat® Product Link™ can:

- Tell you how your operators are working and if they are operating your equipment responsibly
- Monitor machine idle time versus operating time
- Show the frequency of operator events, so you know when additional training is a good idea

Attention to training and company culture can also yield measurable results in how well your people take care of all your business assets.

## Cat® EM Services

Cat EM Services (Equipment Management Services) can show you how easy it is to put the latest technologies to work for your business. Plus, EM Services offers specialized advice and targeted services that will help keep your business a step ahead of your competition.

# Lease or Own

## WHICH IS THE BETTER OPTION FOR YOU?

The start of a new year provides an opportunity for a fresh start.

It's a great time for machine owners to evaluate their business strategies, project schedules and existing equipment.

Whether you're just starting out or looking to expand your fleet, equipment purchase decisions are important. No two companies present the same situation, so it only makes sense that each company's financial solution be different too.

Those ready to expand or update their fleets have some considerations to make before purchasing. Does it make more sense to lease or own the equipment? How do you know which financial solution best fits your situation? How can you be sure you've made the

right choice? These are just a few of the questions to ask when making a purchase decision.

Equipment purchase considerations begin with ownership and leasing choices, which both have benefits and drawbacks. The key to making the right decision is being aware of all the options and considering how they'll affect your individual situation.

### Equipment Ownership

Customers can choose to finance or lease the equipment, but making a purchase from working capital or cash reserves may be better for acquiring equipment at the lowest cost. Service fees, finance charges and interest expenses are eliminated and ownership is immediate.

The biggest advantage to equipment ownership is depreciation, which can be listed as an income tax deduction allowing a taxpayer to recover the cost. It's an annual allowance for the wear and tear, deterioration or obsolescence of the equipment.

### Equipment Leasing

A properly structured lease can provide many financial advantages to the lessee. It can free working capital for other investments while not affecting the customer's borrowing power or line of credit. Lease payments may provide a tax deductible business expense, reducing tax liabilities.

While customers have several leasing options, installment sales contracts (loans) provide financing options for customers not interested in leasing.

**FINANCE LEASE** - A capital lease designed for customers who

want the option to own at the end of the lease. This option provides the same tax benefits as ownership including equipment depreciation, lower payments and equity buildup.

**FLEX LEASE** - Designed for customers who want a finance lease with the option to return equipment after a stated interval or prior to lease termination. Customers can return the equipment at lease-end, or they can exercise a final bargain purchase option.

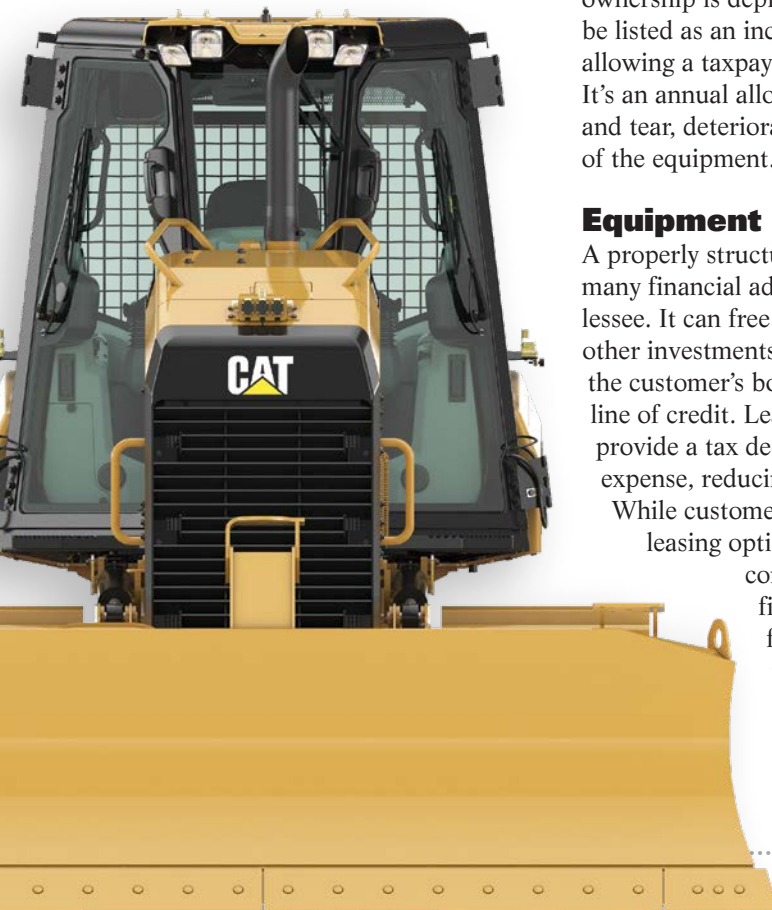
**TAX LEASE** - An operating lease that qualifies for off-balance-sheet financing and allows the lease holder to make the lowest possible payment. On the other hand, tax leases do not build equity and cannot be modified during the life of the contract. At the end of the lease, customers may purchase the equipment or return it.

### How Do You Choose the Best Option?

Each applicant should take some time to assess finances, weigh options and meet with a representative from our dealership for consultation. Cat Financial offers helpful insurance and financing tools to help speed up the process.

- › *The Financial Solutions Selector* lists financing and insurance options on an individual basis.
- › *The Lease vs. Own Comparison Tool* allows users to quickly assess the benefits of buying or leasing Cat equipment.
- › *The Payment Calculator* estimates monthly payments and physical damage insurance options.

*Take some time to explore your options and talk to a representative from our dealership to choose the best option for you. For more information on the many leasing options available, please visit [catfinancial.com/en\\_US/solutions/industry/construction.html](http://catfinancial.com/en_US/solutions/industry/construction.html) **or***





# Superior Dealer Support

**Y**ou need to maximize fuel efficiency, minimize operating costs and gain every minute of production you can. Your Cat® dealer has the experience to help you enhance every aspect of your operation, so you can work faster and more efficiently than ever.

Many customers have told us that dealer support is the most important aspect of any machine purchase, lease or rental. When you buy Cat equipment, you also receive full support from us, your local Cat dealer, and the resources of the Cat dealer network. We are here to serve you every single day.

## Our range of support services includes:

- › The industry's most extensive machine lineup
- › Broad range of attachments
- › Selection of Cat used equipment
- › Extensive fleet of Cat and allied rental equipment
- › Technology products to increase productivity, reduce costs
- › Machine selection and configuration assistance
- › Operator, maintenance and service training
- › Full range of purchase, lease and rental financing options
- › Extensive new parts inventory at each of our locations
- › Full range of diagnostic tools, services and equipment
- › Complete shop and field service by experienced technicians
- › S•O•S<sup>sm</sup> Fluids Analysis program
- › An array of customizable Customer Support Agreements
- › Total Maintenance & Repair Agreements
- › Cat Insurance Physical Damage program\*
- › The Cat Financial Commercial Account for parts, service, rentals, attachments and used equipment\*

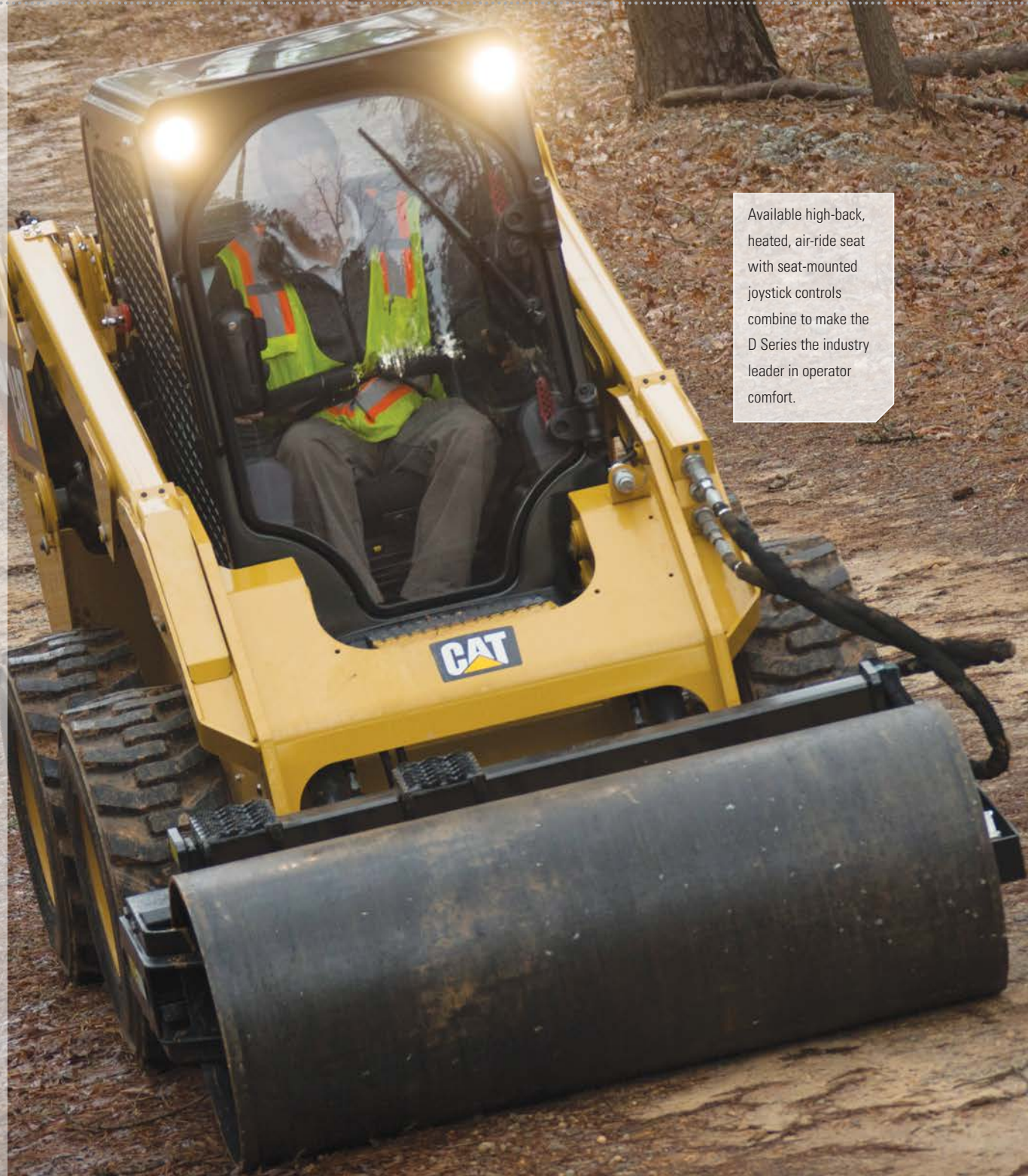
*\*Not available from all dealerships*



Scan the QR Code with your smart phone to learn more about our **Superior Dealer Support**.

# Skid Steer Loaders

TACKLE ANY JOB



Available high-back, heated, air-ride seat with seat-mounted joystick controls combine to make the D Series the industry leader in operator comfort.



## 226D, 232D 236D, 242D, 246D, 262D, 272D2, 272D2 XHP

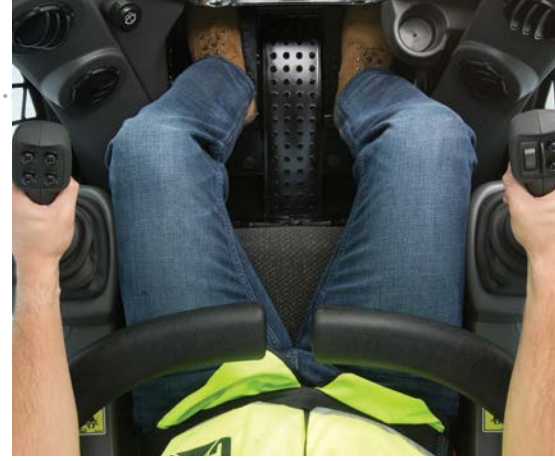
Cat® Skid Steer Loaders are designed and built for maximum performance and safety. These machines are also compatible with a wide variety of attachments to tackle everything from drilling holes to moving dirt, to ground-sweeping finishing work. Plus, save on man-hours with a quick coupler that enables fast attachment changes. While constantly undergoing development and refinement of advanced power and hydraulic technologies, skid steer loaders provide you with power, versatility, efficiency, and ease of operation. High-Flow hydraulic system is available for applications that demand maximum hydraulic work tool performance.

- › Gross Power: 65.8 hp to 110 hp
- › Rated Operating Capacities: 1,550 lb to 3,650 lb
- › Electronic Torque Management system helps maximize performance, minimize fuel consumption
- › Available high-back, heated, air-ride seats include seat-mounted, adjustable joystick controls
- › Sealed and pressurized cabs provide a cleaner, quieter work environment
- › Speed Sensitive Ride Control option assures an even smoother ride with better material retention
- › Available High-Flow, high-pressure hydraulic systems efficiently run even the most power-hungry attachments

226D



## TIRE OPTIONS:



Scan the QR Code with your smart phone to learn more about Cat Skid Steer Loaders.



Scan the QR Code with your smart phone to learn more about **Cat Multi Terrain Loaders**.

# Multi Terrain Loaders

## OUTSTANDING POWER, VERSATILITY

257D, 277D, 287D, 297D2, 297D2 XHP

High performance powertrain provides maximum performance and production capability through the Electronic Torque Management system, optional two-speed travel and an industry-exclusive electronic hand/foot throttle with decel pedal capability. Electronically controlled Cat C3.3B engine provides high horsepower and torque while meeting U.S. EPA Tier 4 Final (EU Stage IIIB) emission standards. Cat® Multi Terrain Loaders work where other compact track loaders can't. There are also a wide variety of attachments you can choose from to match your specific needs.

- Gross Power: 74.3 hp to 106 hp
- Rated Operating Capacities: 2,800 lb to 4,800 lb – 50 percent tipping load
- Standard, fully independent torsion axle suspension and Speed Sensitive Ride Control option assure a smoother ride, better material retention
- High-Flow, high-pressure hydraulic systems are available to maximize attachment performance
- Intelligent Leveling™ system and optional positioning capabilities speed cycle times
- Industry-leading sealed and pressurized cab option provides a cleaner, quieter work environment
- Available high-back, heated, air-ride seats include seat-mounted, adjustable joystick controls



# Compact Track Loaders

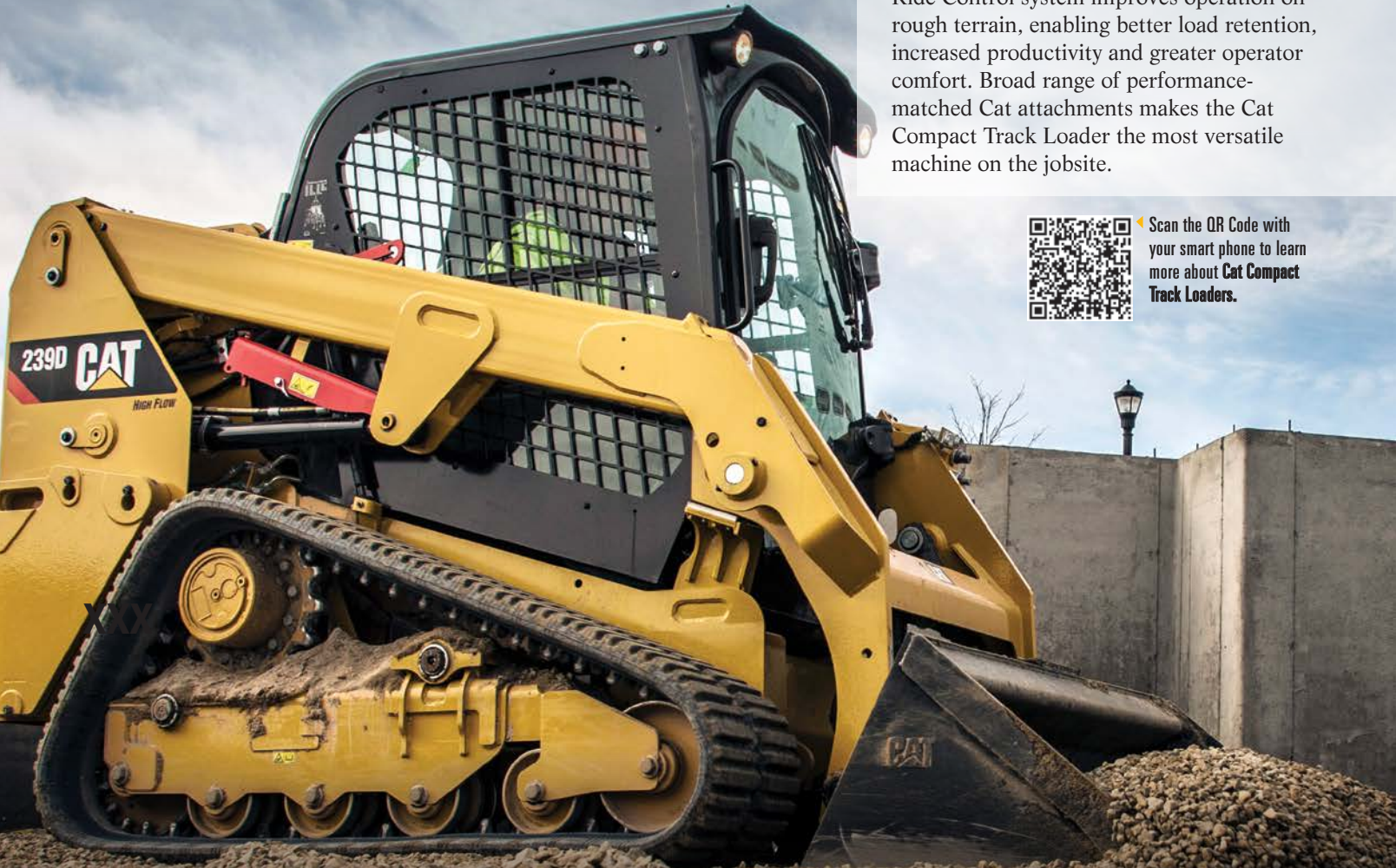
## INDUSTRY LEADING TECHNOLOGY

239D, 249D, 259D, 279D, 289D, 299D2, 299D2 XHP


Cat Intelligent Leveling™ system (ILEV) provides industry-leading technology, integration and optional features such as dual direction self level, work tool return to dig and work tool positioner. Standard fully independent torsion axle suspension combined with the optional Speed Sensitive Ride Control system improves operation on rough terrain, enabling better load retention, increased productivity and greater operator comfort. Broad range of performance-matched Cat attachments makes the Cat Compact Track Loader the most versatile machine on the jobsite.



Scan the QR Code with your smart phone to learn more about Cat Compact Track Loaders.



- Gross Power: 67.1 hp to 110 hp
- Rated Operating Capacities: 2,050 lb to 4,975 lb – 50 percent tipping load
- Standard, fully independent torsion axle suspension and Speed Sensitive Ride Control option assure a smoother ride, better material retention
- High-Flow, high-pressure hydraulic systems are available to maximize attachment performance
- Intelligent Leveling™ system and optional positioning capabilities speed cycle times
- Industry-leading sealed and pressurized cab option provides a cleaner, quieter work environment
- Available high-back, heated, air-ride seats include seat-mounted, adjustable joystick controls
- Bar-style rubber track tread option available for extra traction, especially when operating in snow



Compact and efficient design provides superior power on the jobsite.

# Hydraulic Excavators

## UNMATCHED VERSATILITY

You can count on these machines to deliver top performance, unmatched versatility, and the industry's best fuel efficiency—guaranteed. You'll also love their ease of operation, durability, and latest safety and technology features that will make you the model of productivity (and the envy of your competitors). Plus Cat Excavators are downright easy to maintain. An extensive line of Cat® Mini Hydraulic Excavators offers the performance to dig in and be productive on every job. Fuel efficiency and versatility make Cat Small Hydraulic Excavators ideal choices for many utility applications.



## MINI 300.9D, 301.4C, 301.7D, 301.7D CR, 302.4D, 302.7D CR, 303E CR, 303.5E2 CR, 304E2 CR, 304.5E2 XTC, 305E2 CR, 305.5E2 CR, 307E2, 308E2 CR

- › Net Power: 13 hp to 65 hp
- › Operating Weights: 2,061 lb to 18,519 lb
- › High digging forces and fast cycle times help you complete more work
- › Auxiliary hydraulics with quick disconnect fittings maximize attachment performance
- › Pin-Grabber Coupler enables the operator to change attachments quickly
- › Auto idle, auto two-speed and a load-sensing variable pump optimize fuel efficiency
- › Compact or standard radius tail swing, as well as swing, fixed and variable angle boom options enable you to match working conditions on any jobsite
- › Quiet, spacious cabs and smooth ergonomic controls with integrated auxiliary and swing-boom functions keep operators comfortable, reducing fatigue

## SMALL 311FL RR, 313F L, 313FL GC, 315F L, 316F L, 318F L

- › Net Power: 70 hp to 117 hp
- › Operating Weights: 30,600 lb to 43,872 lb
- › Improved fuel efficiency delivers more work at lower cost
- › Higher digging forces, increased lifting capacity and more drawbar pull offer best-in-class versatility and performance
- › Sleek, in-cab LCD monitor is full-color, user-friendly and provides access to service, performance and maintenance tracking
- › Unparalleled standard Tool Control System offers preset Cat tool settings and pre-programmable pressure and flow for up to 20 hydraulic attachments



Scan the QR Code with your smart phone to learn more about **Cat Hydraulic Excavators**.

# Backhoe Loaders SUPERIOR DIGGING FORCE



Cat® Backhoe Loaders provide superior digging, trenching, backfilling and material handling capability for productive performance in a variety of applications.



Scan the QR Code with your smart phone to learn more about Cat Backhoe Loaders.

## 415F2, 415F2 IL, 416F2, 420F2/420F2 IT, 430F2/430F2 IT, 450F

Cat® Backhoe Loaders set the industry standard for operator comfort, exceptional performance, versatility and jobsite efficiency. Cat Backhoes deliver the power and precise handling you need when operating in areas where using larger equipment is not practical. Because of their relatively small frame size and versatility, backhoe loaders improve construction productivity and lower your machine operating costs.

- › Net Power: 68 hp to 127 hp
- › Digging Depths: 14.3 ft to 21.4 ft
- › Operating Weights: 24,251 lb to 27,115 lb
- › Powerful, load-sensing hydraulic systems provide excellent response for improved hoe and loader productivity and greater bucket breakout force
- › All new operator station with machine controls at operator's fingertips and multiple adjustments to keep the operator comfortable and productive\*
- › Economy mode not only saves fuel, but maintains machine performance\*
- › Industry-leading versatility with an integrated toolcarrier that provides a hydraulic coupler and increased loader performance over the single tilt loader, as well as parallel lift\*
- › Air-suspension seat and ergonomic controls provide a comfortable working environment
- › Travel speeds up to 25 mph enable faster roading between jobsites

*\* Features don't apply to 450F model*



# Wheel Loaders

DEPENDABLE MACHINES FOR ANY JOB







Cat® Wheel Loaders set the standard for reliability, productivity, fuel efficiency, versatility and operator comfort. Deep system integration results in reduced emissions and improved fuel economy without interrupting machine performance. Make your Cat Wheel Loader even more versatile by pairing it with Caterpillar's broad range of attachments. Select from a wide variety of compact wheel loaders and small wheel loaders.

## COMPACT 903C2, 906M, 907M, 908M, 910M, 914M, 918M

- › Net Power: 42 hp to 115 hp
- › Operating Weights: 9,060 lb to 20,917 lb
- › Strong breakout force, fast cycle times and dependable performance are built in
- › Superior reach and excellent visibility enable you to place material easily and efficiently
- › Spacious cabs with joystick controls keep you comfortable throughout the workday
- › Optional Ride-Control system provides an even more comfortable ride and greater material retention over rough terrain
- › Skid steer loader-style coupler on the 903C2, 906M, 907M and 908M enables use of Cat Skid Steer Loader attachments for increased versatility
- › Tackle more jobs with one machine using the extensive line of Cat attachments

## SMALL 926M, 930M, 938M

- › Net Power: 153 hp to 188 hp
- › Operating Weights: 28,770 lb to 36,216 lb
- › A smooth, step-less, electronically controlled hydrostatic transmission provides adjustable power to the ground
- › Large, spacious cabs feature excellent visibility, extremely low sound levels, automatic temperature control and ergonomic seat-mounted joystick controls
- › Predictable hydraulic systems sense demand and adjust flow and pressure to match
- › Optimized, parallel-lift Z-bar loader linkage combines powerful digging ability with toolcarrier capabilities for increased performance and versatility
- › A new line of optimized Performance Series Buckets and other attachments are available in a Pin-On or Fusion™ Coupler interface



Scan the QR Code with your smart phone to learn more about Cat Wheel Loaders.





# Telehandlers

## LOW OPERATING COSTS

TH255C, TH306D, TH357D, TH408D, TH514D, TH3510D, TL642D, TL943D, TL1055D, TL1255D

Superior design and advanced features combine to give Cat® Telehandlers the best all-around visibility and take the lead in lift and reach capability. These versatile machines combine legendary Cat durability with low operating costs.

- › Rated Load Capacities: 5,500 lb to 12,000 lb
- › Maximum Lift Height: 18.4 ft to 54.6 ft
- › Wide range of lift capacities and lift heights to meet most lifting needs
- › Spacious cab and suspension seat keep you comfortable all shift long
- › Three steering modes offer improved maneuverability on any terrain
- › Single-lever joystick contains all boom functions for easy operation
- › Hydraulic stabilizers—standard on the TL1055D and TL1255D models and optional on the TH3510D, TL642D and TL943D models—provide extra support and increased capacity at reach for work on any terrain



Scan the QR Code with your smart phone to learn more about Cat Telehandlers.

## M314F, M315F, M316F, M317F, M318F, M320F, M322F

Wheel excavators have the mobility, speed, power and reliability to be the most versatile machines in your fleet. Able to travel up to 23 mph, wheeled excavators can move quickly from job to job, minimizing the need for costly additional transportation. Flexible configurations are available to meet all your needs with various booms/sticks, tires and undercarriages.

- › Net Power: 141 hp to 169 hp
- › Travel Speeds: up to 23 mph
- › The versatility and mobility of wheel excavators enable you to complete more jobs, in less time, using fewer machines
- › Wheel excavators can move quickly from job to job minimizing the need for, and cost of, transporting equipment
- › With standard Tool Control System, you can pre-program hydraulic flow and pressure for up to 10 different attachments
- › Multiple auxiliary hydraulic options enable use of a wide range of attachments
- › Best-in-class visibility to front, both sides and upward is further enhanced by a standard rear video camera that displays on an in-cab monitor



# Wheel Excavators

## HIGHLY MOBILE WORKHORSES



Scan the QR Code with your smart phone to learn more about Cat Telehandlers.

# Dozers

## FINISH GRADING ACCURACY

The Cat® Small Dozers are designed to optimize speed, transportability, maneuverability, versatility and finish grading accuracy. These crawler dozers are ideal for residential construction, performing such tasks as clearing and grading lots, sloping the sides of roads, backfilling, and final grade work for landscaping and driveway construction.



Scan the QR Code with your smart phone to learn more about **Cat Dozers**.

### SLOPE ASSIST

Cat Dozers feature class-leading power, ergonomic joystick controls and integrated grade-slope controls for fast, accurate dozing.

## SMALL D3K2, D4K2, D5K2

- › Net Power: 80 hp to 104 hp
- › Operating Weights: 17,465 lb to 20,313 lb
- › Stable Blade feature complements operator blade control input, reducing fatigue while increasing productivity in finish grading applications
- › Eco Mode delivers extra fuel savings of up to 20 percent
- › Traction Control reduces track slip and undercarriage wear, even at maximum load
- › Power Pitch option enables the blade pitch to be adjusted hydraulically from the operator's seat to boost productivity
- › Optional heated and ventilated air-suspension seat and optional heated control handles help increase operator comfort in all climates
- › Slope Assist – New optional grade control feature which helps you more easily achieve the desired blade mainfall and cross slope automatically



## MEDIUM D6K2, D6N, D6T, D7E

- › Net Power: 130 hp to 238 hp
- › Operating Weights: 29,258 lb to 57,441 lb
- › Innovative diesel-electric technology on D7E and revolutionary drivetrain transmit power to the ground very efficiently for greater dozing power that requires less fuel, delivering balanced performance, and increasing productivity and efficiency for best-in-class total ownership costs over life of machine
- › D6K2 offers foldable blade design to enable transport without removing blade



# Attachments

## ADD VERSATILITY INCREASE EFFICIENCY

Caterpillar offers the widest range of attachment solutions. Each are engineered, balanced and tested to work effectively with Cat® models for minimal machine stress and optimal machine performance. Cat attachments are engineered to maximize the power and efficiency of the equipment and deliver the most productivity. Utilizing attachments is a great way to maximize the value of your machine, enabling it to perform a variety of tasks while increasing efficiency and saving valuable man-hours.

- › Tailor Cat machines to the specific requirements of your jobsites
- › Perform multiple tasks across a wider range of applications
- › Provide total system solutions and make short work of any task
- › Bid successfully on a broader range of projects

### THE RANGE OF CAT® ATTACHMENTS INCLUDES:

- › Augers
- › Backhoes
- › Bale Handlers
- › Blades
- › Brooms
- › Brushcutters
- › Buckets
- › Carriages
- › Cold Planers
- › Compactors
- › Couplers
- › Cutters
- › Fork-Mounted Work Platforms
- › Forks
- › Grapples
- › Hammers
- › Lifting Hooks
- › Material Handling Arms
- › Mixing Buckets
- › Mulchers
- › Multi Processors
- › Plows
- › Pulverizers
- › Rakes
- › Rippers
- › Shears
- › Silage Defacers
- › Snow Blowers
- › Snow Plows & Wings
- › Snow Pushes
- › Stump Grinders
- › Thumbs
- › Tillers
- › Trenchers
- › Truss Booms
- › Wheel Saws
- › Winches



Scan the QR Code with your smart phone to learn more about Cat Attachments.



**Landscape Rakes**



**Vibratory Plate Compactors**



**Wheel Saws**



**Power Box Rakes**



**Stump Grinders**



**Thumbs**



**Hammers**



**Augers**



**Forks**



**Brooms**



**Trenchers**



**Cold Planers**



**Multi Purpose Buckets**



**Grapples**



**Fork-Mounted Work Platforms**



**Material Handling Arms**



**Grapple Buckets**



**Shears**



**Blades**



**Winches**



**Grapple Rakes**



**Truss Booms**



**Tillers**



**Compactors**





*Brushcutters*



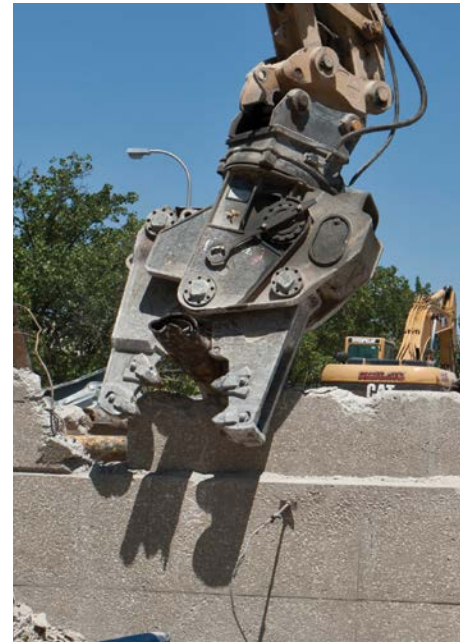
*Mulchers*



*Couplers*



*Rippers*



*Pulverizers*



*Backhoes*



*Sectional Snow Pushes*



*Snow Blowers*

# Track Loaders

## UP TO ANY TASK

953D, 963K, 973D

Load, carry, dig, push ... and so much more. Designed to be productive, these machines will give you complete satisfaction in a wide range of tough applications in the most efficient and productive way. The design delivers strength and durability with excellent control and unmatched ease of operation. Tough jobs, rough ground and tight spaces are no match for the versatile line-up of Cat® Track Loaders—these machines are up to any excavating task.

- › Net Power: 154 hp to 263 hp
- › Operating Weights: 33,852 lb to 61,857 lb
- › Increased horsepower enables excellent maneuverability, powerful excavating and efficient truck loading
- › Redesigned, ergonomic cabs provide greater operator comfort
- › Revolutionary SystemOne™ undercarriage and a new implement system increase productivity and reduce operating costs
- › Ideal for working in the toughest underfoot conditions on demanding construction and demolition jobsites



Scan the QR Code with your smart phone to learn more about **Cat Track Loaders**.

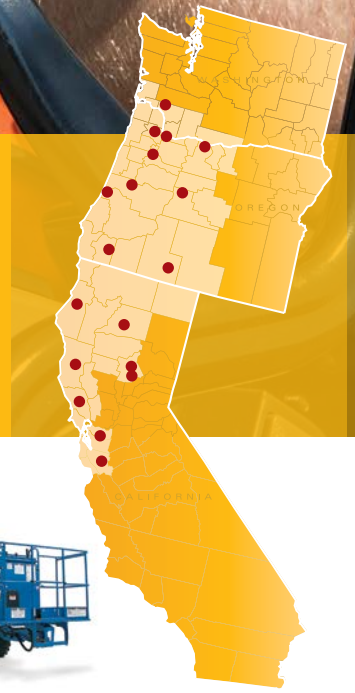


# PETERSON AND CRESCO'S CAT RENTAL STORES HAVE YOU COVERED



Cresco and The Cat Rental Store® serve contractors, large and small, with all the tools and equipment they need for both commercial and residential projects. With locations throughout California, Oregon, and Washington, we've got your equipment needs—from big to small—covered!

**BUILT FOR IT.™**

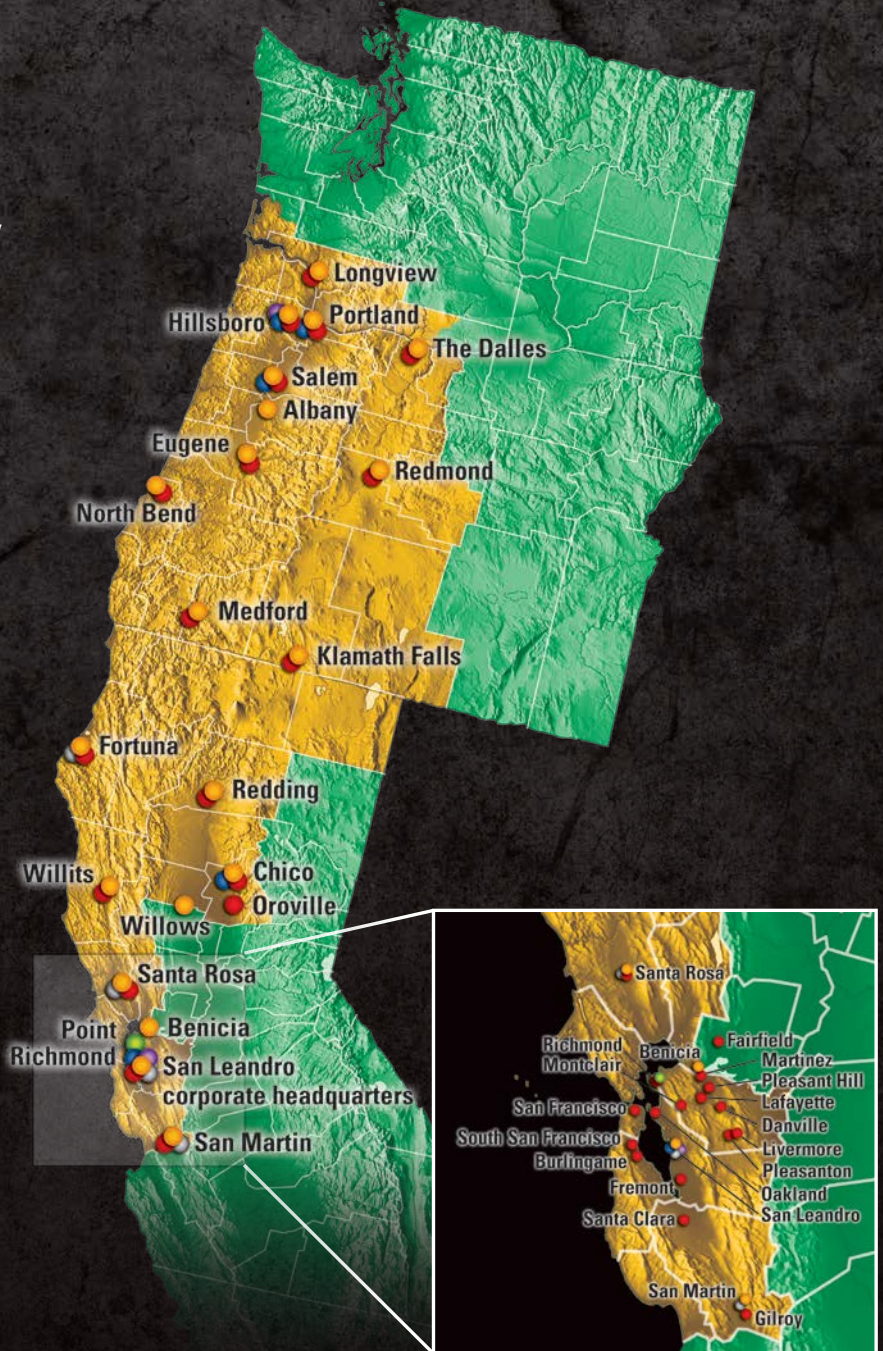


Call (800) RENT-CAT or visit us  
online at [petersonrents.com](http://petersonrents.com)  
to learn more!



Peterson is northern California, Oregon, and southwest Washington's authorized Cat® dealer and your source for Cat heavy equipment and engines. We also provide rental equipment from top manufacturers (through Cresco, our equipment rental division); ag equipment from Massey Ferguson, Challenger, and other top brands; International Trucks; and Trimble equipment and software (through SITECH and BuildingPoint Pacific, our Trimble dealerships).

Visit us online at [petersoncat.com](http://petersoncat.com)!



**LEGEND**

- Peterson Dealership
- Peterson Trucks
- Cresco/The Cat Rental Store
- SITECH
- BuildingPoint Pacific
- Waterfront Marine Service Location

**OREGON/WASHINGTON**  
**(800) 452-7676**

**CALIFORNIA**  
**(844) 349-4353**



Follow Peterson online