

# WHAT'S YOUR STANDARD?



**10** REASONS TO CHOOSE CAT  
OVER THE COMPETITION

**BUILT FOR IT.™**

**PETERSON**



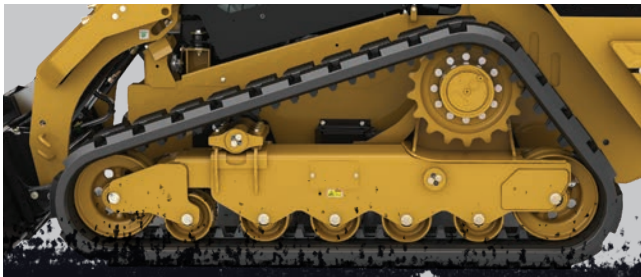
# 10 REASONS TO CHOOSE CAT® D & D2 SERIES SKID STEER, MULTI TERRAIN, AND COMPACT TRACK LOADERS OVER THE COMPETITION

If you are considering purchasing compact construction equipment, you want to be knowledgeable about your options.



## 1 SUSPENDED UNDERCARRIAGE

The competition hard mounts their undercarriage to the chassis resulting in a rough ride and accelerated track wear. The Cat **STANDARD** suspended undercarriage isolates the operator and machine chassis from shock and vibration generated by rough terrain while conforming to ground conditions for maximum traction and flotation. This means you get a smooth ride, superior load retention, and longer track life.



**Cat**  
**STANDARD**



Torsion Axle



**Competitor**  
No Suspension,  
Rigidly Mounted Undercarriage

## 2 VISIBILITY

Cat's **STANDARD** for worksite visibility means increased viewable area around the machine. A wide, frameless front door delivers exceptional view of the entire work tool and the standard convex rearview mirror give the operator a panoramic view of the jobsite. The sleek lift arm design provides a narrow profile that delivers excellent sight lines to the wheels/tracks and the surrounding work area. An optional integrated rear view camera further enhances the rearward field of vision for increased worksite visibility. The competition's bulky lift arm design obstructs visibility to the rear quarters of the machine, tracks and the work tool (bucket corners). The rear view mirror is not standard on every model and there is no option for a rear view camera.



**Cat**  
**STANDARD**



**Competitor**

## 3 OPERATOR ENVIRONMENT

The Cat **STANDARD** modular one-piece sealed and pressurized cab delivers a clean, quiet working environment. The competition's less effective sealing design includes an overhead door and two piece cab that relies on foam seals to join the two sections. Cat's air vents are effectively positioned to direct air to your body and/or feet, so you can stay cool on a hot day and warm on a cool day. Why pay for the competitor's Heat/AC option if you can't aim the air where you need it? Maximum comfort is achieved with Cat's available High Back, Heated Air Suspension Seat with Lumbar and arm bar adjustments. The competitor's optional Air Suspension Seat does not include Heat, Lumbar Support, or adjustable arm bars.



**Cat**  
**STANDARD**



**Competitor**

Vents Only On  
One Side of Cab

## 4 HYDRAULIC FAN

The Cat **STANDARD** hydraulic demand fan allows you to work in the toughest applications, providing optimal cooling air flow even when the engine lugs. Measuring temperature, the fan spins only as fast as needed, resulting in better fuel efficiency, lower noise levels & faster machine warm up. The competition's CTL models use a crankshaft driven fan that requires maximum engine RPMs to provide maximum cooling. This high idle operation uses more fuel and creates more external noise around the machine. If the engine lugs, fan speed slows resulting in less cooling air flow when you need it most.



**Cat**  
**STANDARD**



**Competitor**

## 5 SERVICEABILITY

Time is money and ease of access is **STANDARD** on Cat machines. Grouped service points and easy, ground level access allow you to perform daily/routine maintenance without using tools. This helps keep your machine running at optimal efficiency, reducing down time and increasing productivity. The competition's CTLs require multiple tools to gain access to routine maintenance items. Large components must be unbolted and moved to access fuel, oil, and air filters.



**Cat**  
**STANDARD**

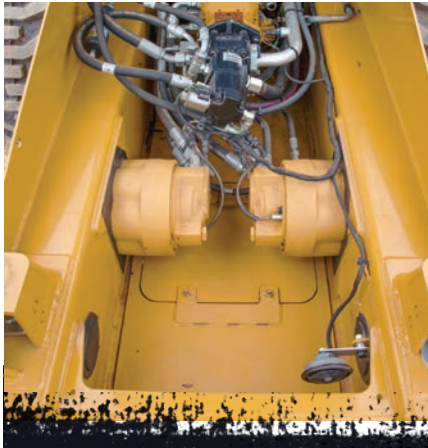


**Competitor**

Tools Required For  
Service Access

## 6 QUALITY COMPONENTS

What's under their hood? A crowded under-cab component layout makes troubleshooting difficult. Cat's **STANDARD** tidy and open component layout includes high quality sealed electrical connectors, Cat ToughGuard™ Hose. Cat's Hydraulic Oil, with a 6,000-hour life, stands up to the toughest jobs and keeps you working when it counts.



**Cat**  
**STANDARD**



**Competitor**

## 7 BROAD PRODUCT LINE

Cat offers 20 models on three traction platforms with multiple lift path choices so you get the **RIGHT** machine for the job with the lowest owning and operating cost solution; Skid Steer, Multi Terrain, or Compact Track Loader. Why settle for what they *have* instead of what you *need*?



**Cat**  
**STANDARD**

**NO** RADIAL LIFT  
PATH MODELS

**NO** MTL MODELS

**LIMITED SOLUTIONS**

ONLY 2 CTL MODELS

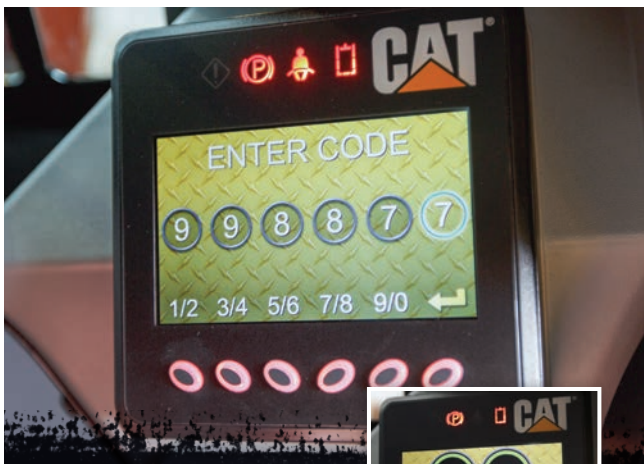
ONLY 2 SSL MODELS

**Competitor**

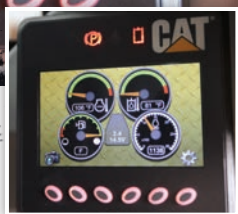


## 8 SECURITY

The Cat **STANDARD** control monitor provides an anti-theft security system to help prevent unwanted operation. With the optional Advanced Display panel, the security system is capable of programming up to 50 operator/security codes to store and recall each operator's preferences and working parameters. The competition has no capability to provide an anti-theft security solution nor do they have an in-cab display to match Cat's heads-up advanced user interface.



**Cat**  
**STANDARD**



**Competitor**

## 9 SUPERIOR SAFETY

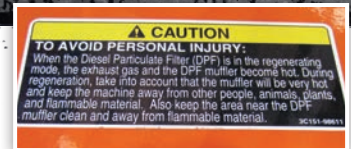
Lower your risk of jobsite accidents, insurance rates and repair costs with our industry leading **STANDARD** safety features that include: excellent sight lines, horn, rearview mirror, work lights, backup alarm, two emergency exits, safety interlock system (operator presence, arm bar, door switches), hydraulic accumulator, dead engine lower valve, lift arm brace that can be operated by single person, spring applied hydraulically released parking brake, and patented engine exhaust airflow. A rearview camera is available for enhanced job site safety.



**Cat**  
**STANDARD**



**Competitor**



## 10 DEALER CAPABILITIES

Your Cat Dealer will be there for the life of your equipment, bringing you the tools, technologies, service and know-how that keep your machine productive and make it pay. So when you're looking for a complete and capable parts and service provider, or you're making the decision to buy, rent, repair, rebuild or sell a machine for your business, you owe it to yourself to know the people at your local Cat Dealer.

**Cat**  
**STANDARD**

- ✓ 24/7 Online PartStore™
- ✓ Convenient Locations Near You
- ✓ Unmatched Service
- ✓ Highly Trained Technicians
- ✓ Rebuild Programs
- ✓ Customer Support Agreements
- ✓ Technical Support

**Competitor**

- ✓ Initial Price

# DEALER NAME LOCATIONS

Peterson Cat offers 19 convenient locations to meet all of your sales, rental, parts, and service needs. Please contact your nearest location for more information or visit us online.

## **ALBANY**

30815 Highway 34 SW  
Albany, OR 97321  
(541) 791-9133

## **EUGENE**

2300 Henderson Ave.  
Eugene, OR 97403  
(541) 302-9199

## **HILLSBORO**

5450 Five Oaks Dr.  
Hillsboro, OR 97124  
(888) 738-3776

## **KLAMATH FALLS**

1434 South 6th St.  
Klamath Falls, OR 97601  
(541) 850-8658

## **MEDFORD**

2600 Biddle Road  
Medford, OR 97504  
(541) 282-8551

## **NORTH BEND**

1570 Maple St.  
North Bend, OR 97459  
(541) 756-8708

## **PORTLAND**

4421 NE Columbia Blvd.  
Portland, OR 97218  
(503) 288-6411

## **REDMOND**

3635 SW Airport Way  
Redmond, OR 97756  
(541) 548-8566

## **SALEM**

3850 Turner Rd. SE  
Salem, OR 97302  
(503) 364-0602

## **THE DALLES**

1238 W. Second St.  
The Dalles, OR 97058  
(541) 296-4642

## **CHICO**

425 Southgate Ave  
Chico, CA 95928  
(530) 343-1911

## **FORTUNA**

1700 Alamar Way  
Fortuna, CA 95540  
(707) 725-1888

## **REDDING**

5100 Caterpillar Road  
Redding, CA 96003  
(530) 243-5410

## **SAN LEANDRO**

955 Marina Blvd.  
San Leandro, CA 94577  
(510) 357-6200

## **SAN MARTIN**

13155 Sycamore Ave.  
San Martin, CA 95046  
(408) 686-1195

## **SANTA ROSA**

3710 Regional Pkwy  
Santa Rosa, CA 95403  
(707) 576-1616

## **WILLITS**

1471 B South Main St.  
Willits, CA 95490  
(707) 459-9006

## **WILLOWS**

411 South Tehama St.  
Willows, CA 95988  
(530) 934-8839

## **LONGVIEW**

1205 Baltimore St.  
Longview, WA 98632  
(360) 423-5760

**(888) 738-3776 [www.petersoncat.com](http://www.petersoncat.com)**

**PETERSON**

