



Cat[®] Buckets

311–390 HYDRAULIC EXCAVATORS

FEATURES:

Designed as an Integral Part of the Cat System

- As Cat[®] Excavators continue to set industry standards in general, quarry and heavy construction applications, Cat Buckets are continually enhanced to match machine performance and productivity improvements with each generation.

Next Generation

- Next Generation buckets feature enhanced geometry. Design changes allows the bucket to fill efficiently with each dig resulting in a smoother, faster dig cycle for improved cycle times when used with E and D series excavators.
- Greater wear coverage and a new lift eye design are additional features of Next Generation buckets.

Solutions

- A tremendous amount of research and world wide customer feedback is integrated into each bucket design.
- Customer-pleasing performance is at the heart of each bucket model. A wide range of standard and specialized excavator buckets are available with solutions for digging, excavating, loading and finishing.

Reliable

- Caterpillar[®] has a 35 year legacy designing and manufacturing excavator buckets world-wide. You can count on genuine Cat quality built into every bucket.
- Cat Buckets are developed and tested with Cat Excavators to provide a system with exceptional performance and reliability.

Made to Last

- Cat Buckets are designed and built to Caterpillar specifications — guaranteeing quality and durability.
- High-strength tempered steel provides durability without requiring thick, heavy plates and gives longer life and larger payloads.
- Cat Buckets have up to 50% more wear life when compared to popular competitors.
- Cat Buckets offer optimal load distribution where they attach to the machine.
- The shape of Cat Buckets is designed with optimal wear, increased load-ability, and reduced maintenance as main considerations.

Performance

- Cat Hydraulic Excavators are the industry standard for construction, performance, power and versatility. Cat Excavator Buckets match the machine to the job and provide the best possible performance in your particular application.
- Whether quarry, construction site or landscaping — Cat Buckets focus the full power and performance of the machine on the task at hand and efficiently complete the task.

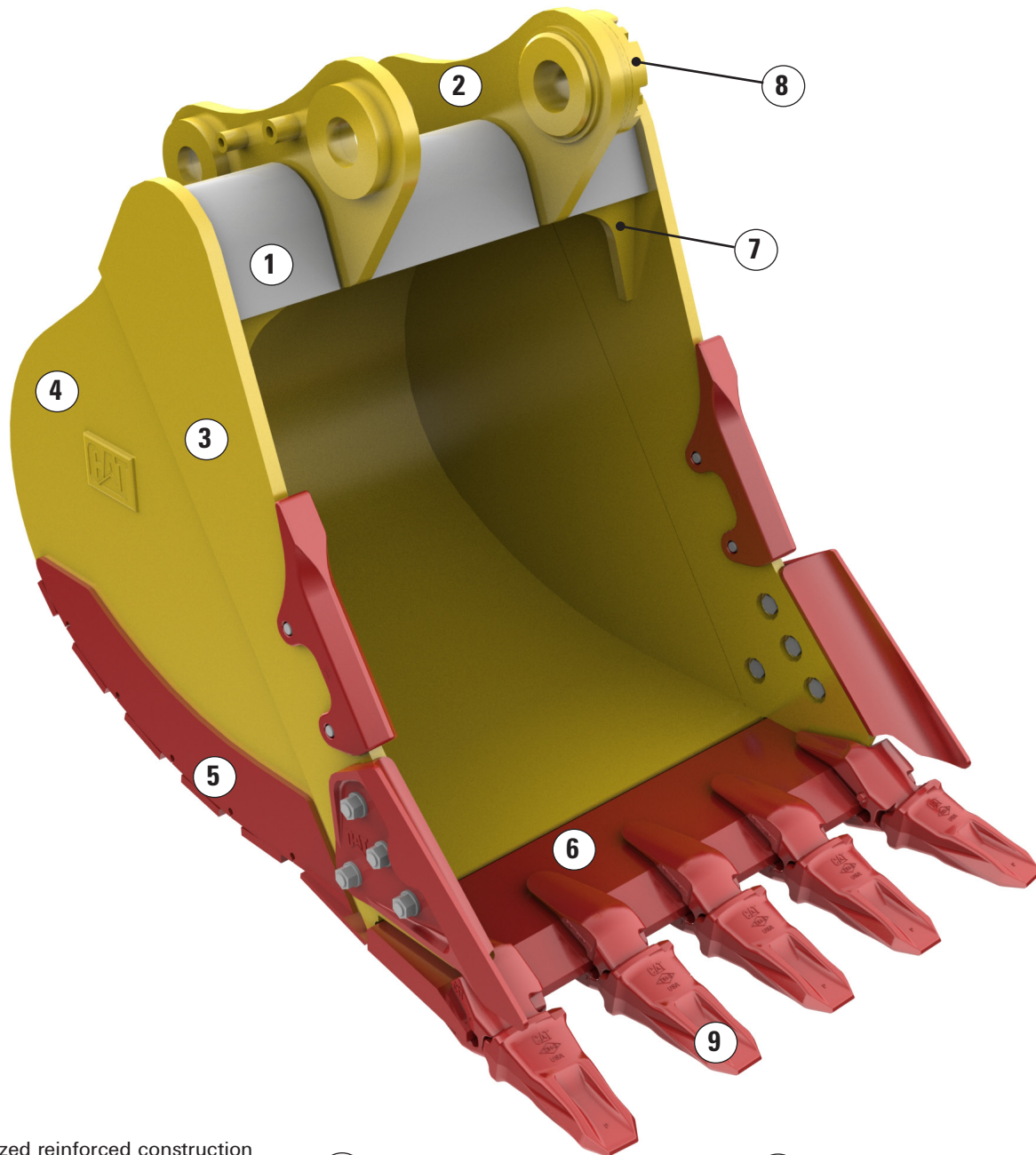


Americas North

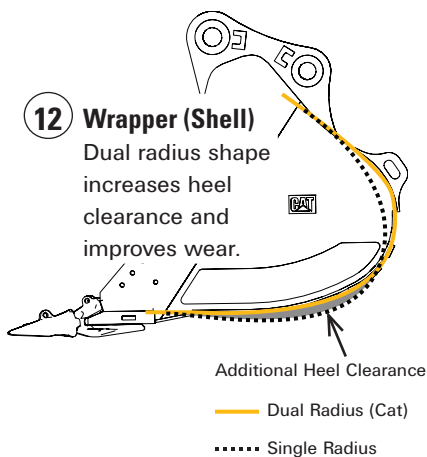
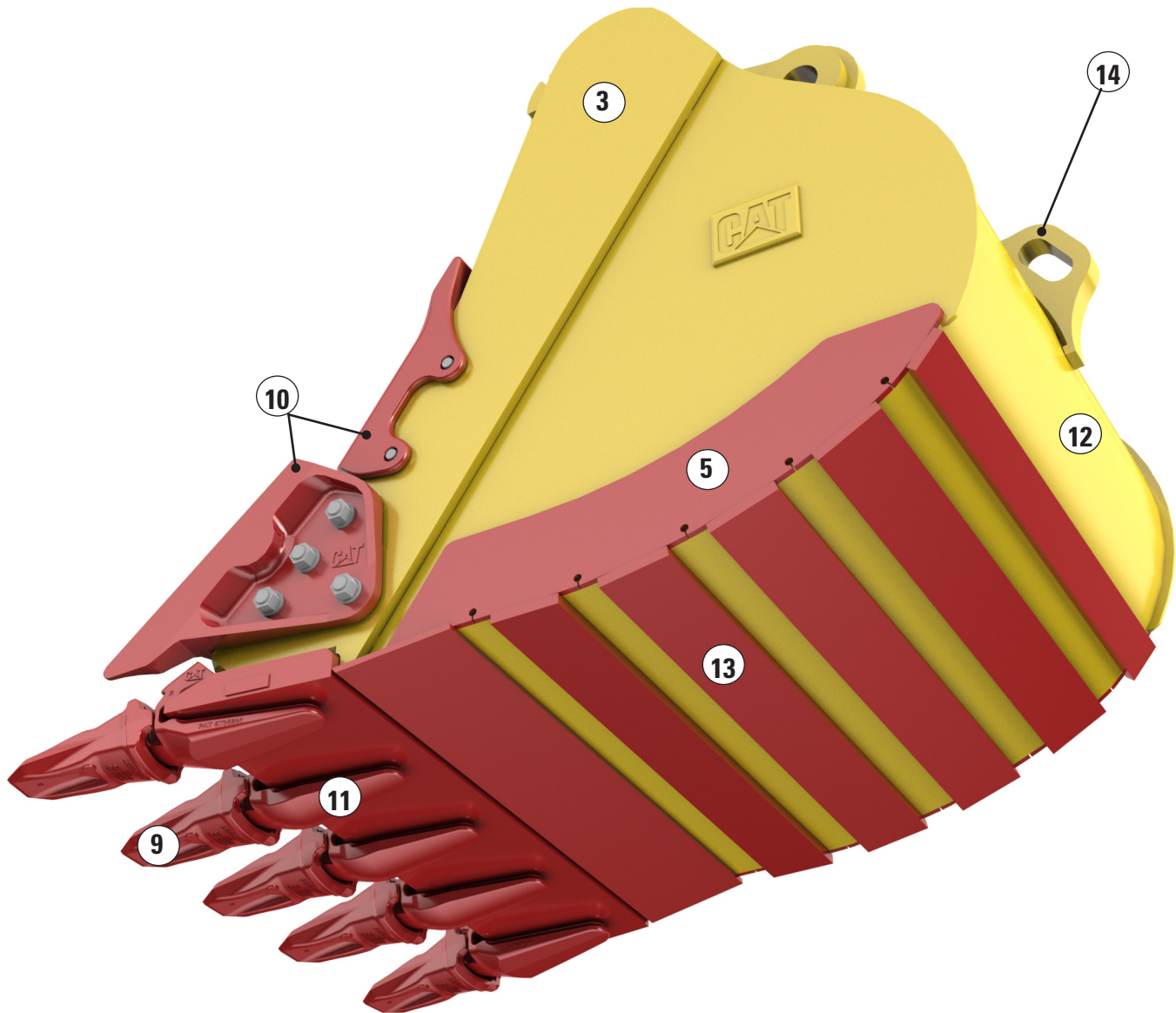


Cat Hydraulic Excavator Buckets

Constructed for Durability, Performance



- 1 Hinge**
Optimized reinforced construction for high strength and performance matched to the machine's power. Pin on or dedicated hinges are available.
- 2 Hinge Plates**
Pass through torque tube for better load distribution and durability.
- 3 Sidebar**
Pre-drilled to add sidebar protection.
- 4 Side Plate**
- 5 Side Wear Plates**
Side plates meet up with bottom wear plates for seamless corner protection.* High strength steel utilized for added protection.
- 6 Base Edge**
Straight or "spade", depending on application.
- 7 Gussets**
For maximum rigidity.
- 8 Adjuster Group**
Allows for easy correction for wear between the stick and bucket.
- 9 Teeth (Tips)**
Forged from steel with properties that maintain hardness for long wear life in tough digging applications.
- 10 Sidecutters & Sidebar Protectors**
For protection and penetration.
- 11 2-Strap Adapters**



- 13 Horizontal Bottom Wear Plates**
Protects wrapper area and reinforces bucket for greater strength and rigidity. Easily replaced.
- 14 Lift Eye**
Larger loop and thinner eye design* for easy shackle matching.

■ High strength microalloyed and T1 equivalent, high-strength, quenched and tempered steel: 90,000+ psi yield strength.

■ 400 Brinell, high-strength, abrasion-resistant steel: 135,000 psi yield strength. 30% more wear resistant than T1.

Bucket shaded to differentiate material types. Actual buckets are Cat yellow.

*Available on Next Generation buckets.

Cat Hydraulic Excavator Buckets

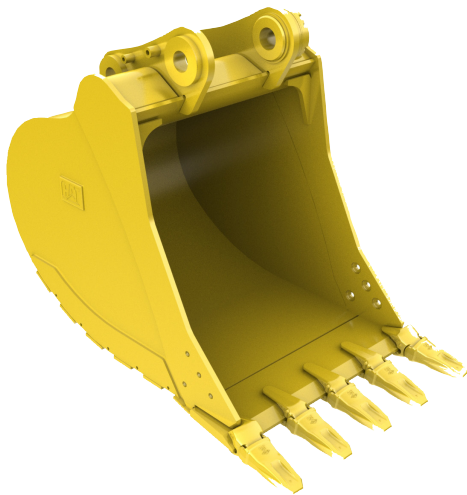
Four Durability Categories Suitable for Any Situation

Next Generation Cat buckets feature four standard bucket durability categories. Each is based on the bucket's intended durability when used in recommended application and material. Each is available as pin-on, or can be used with a quick coupler.

Next Generation buckets are available for 311-390 excavators.

General Duty

GD



For digging in low impact, lower abrasion materials such as dirt, loam, and mixed compositions of dirt and fine gravel.

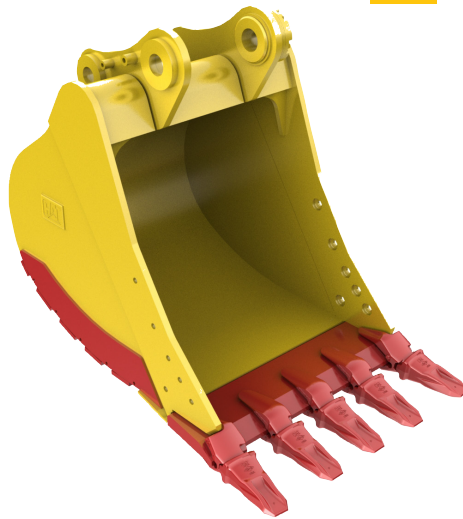
Example: Digging conditions in which General Duty tip life exceeds 800 hours.

Typically larger General Duty Buckets are the most popular sizes, and are used by site developers to mass excavate in low abrasion applications.

- Lighter structures decrease load time and increase the weight that can be lifted.
- Standard size adapters and tips.
- Sidebars are pre-drilled for optional sidecutters.
- On 374 and 390, sidebars are pre-drilled for optional sidecutters and sidebar protectors.

Heavy Duty

HD



The most popular excavator bucket style. A good "center line" choice, or starting point, when application conditions are not well known.

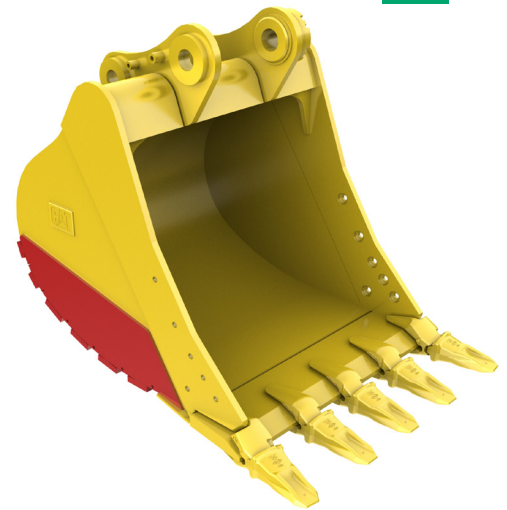
For a wide range of impact and abrasion conditions including mixed dirt, clay and rock. Example: Digging conditions where Penetration Plus tip life ranges from 400 to 800 hours.

Heavy Duty Buckets are recommended for trenching in utilities work, and for the general contractor working in a variety of different situations.

- Thicker bottom and side wear plates than General Duty Buckets for more durability.
- Adapters and tips for 319-336 buckets are up sized for enhanced performance and durability.
- Sidebars are pre-drilled for optional sidecutters, and in many instances, sidebar protectors.

Severe Duty

SD



For higher abrasion conditions such as well shot granite and caliche. Example: Digging conditions where tip life ranges from 200 to 400 hours with Penetration Plus tips.

- Bottom wear plates are about 50% thicker than Heavy Duty Buckets.
- Side wear plates are about 40% larger than Heavy Duty Buckets for added protection against abrasive and gouging wear.
- Adapters and tips are sized to accommodate higher loads and abrasion conditions.
- Sidebars are pre-drilled for optional sidecutters and sidebar protectors for 320 and larger buckets.

Red areas on bucket images illustrate protection against wear as it increases across each category.

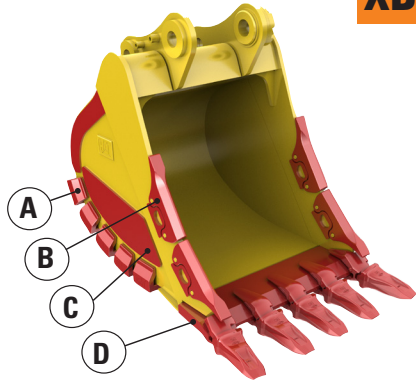
Choosing the Right Durability

Choosing the wrong bucket can easily reduce production, and increase operating cost by 10–20% or more. It can also cause unnecessary wear and fatigue for both machine and bucket.

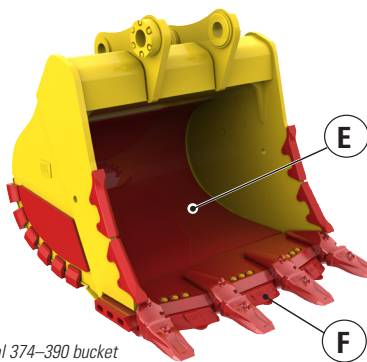
Contact your local Cat dealer for more detailed information on choosing the right excavator, bucket and Work Tool attachment combinations to meet your application needs.

Extreme Duty

XD



Typical 336–349 bucket



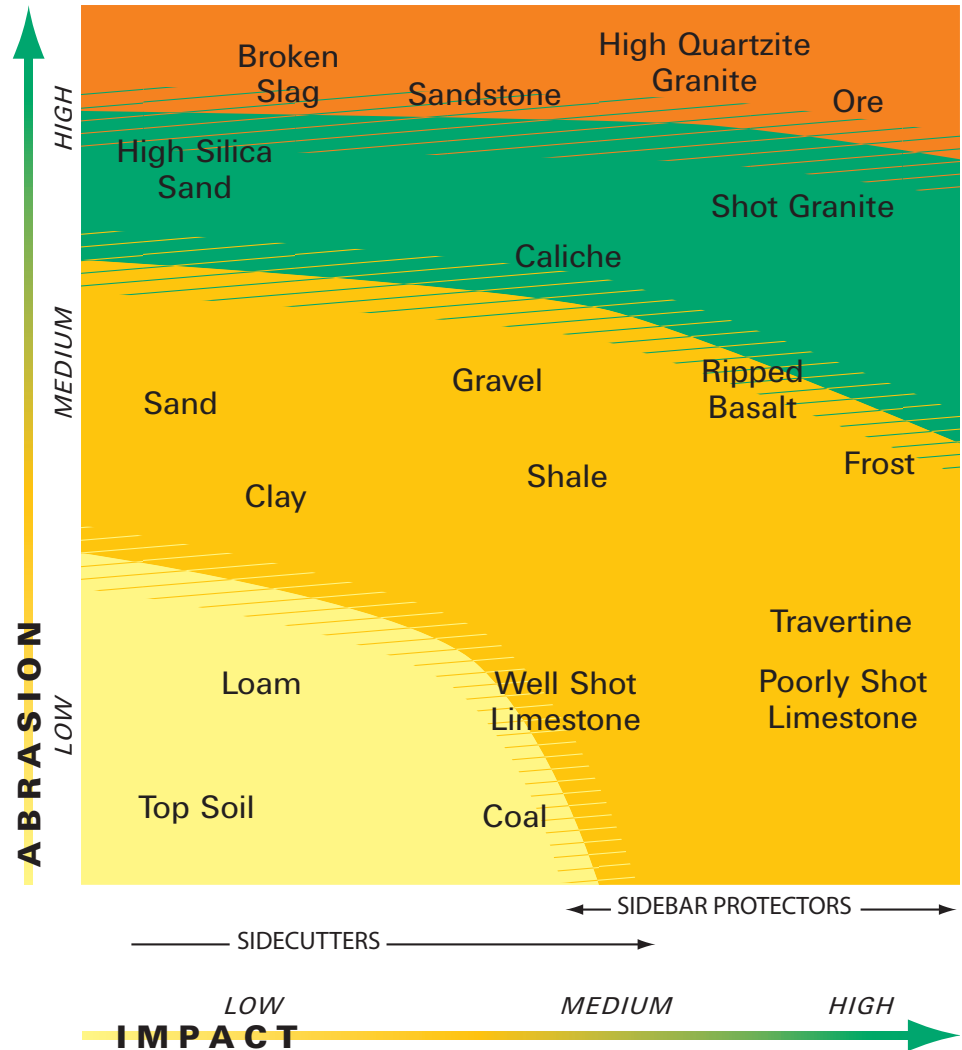
Typical 374–390 bucket

For very high abrasion conditions including high quartzite granite. Example: Digging conditions where tip life is less than or equal to 200 hours with Extra Duty tips.

- Extreme Duty Buckets are armored with extra protection from abrasion and gouging wear. They include: Corner Shrouds [A], Sidebar Protectors with Shear Blocks [B], Additional Wear Material on the side [C], and Base Edge End Protectors (BEEPs) [D]
- Even more protection is available for buckets on larger machines. 374 and 390 buckets also include: Liners [E], Base Edge Segments [F] and Mechanically Attached Wear Plates (MAWPs) (MAWPs not shown. Located on bottom of the bucket.)
- Side wear plates are larger; and
- Adapters and tips are sized to accommodate higher loads and abrasion conditions.

Recommended Material for Bucket Durability

GD **HD** **SD** **XD**



Cat Hydraulic Excavator Buckets

Bucket Styles for Specific Situations

Several different Bucket styles are available — each with a special purpose:



Clean-up

Clean-up Buckets are well suited for dirt digging plus grading and finish work. They feature widths and bolt-on cutting edge systems similar to Ditch Cleaning Buckets, but with capacities and durability more similar to General Duty Buckets..

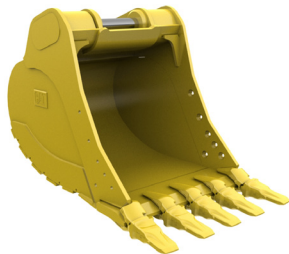
Clean-up Buckets are available for 311-336 excavators.



Ditch Cleaning

These buckets are designed for cleaning ditches, sloping, grading and other finish work. Their shallow depth and compact size make working in confined areas easier. Drainage holes allow liquid to empty so material dumps more easily.

Ditch Cleaning Buckets are available for 311–336 excavators.



Ditch Cleaning Tilt

Tilt Buckets feature a full 45° of tilt in each direction, powered by two double-acting cylinders.

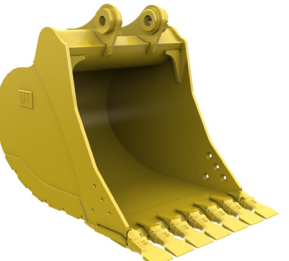
Tilt Buckets are available for 311–329 excavators.



Pin Grabber Performance

This bucket is designed with a patented recessed pin to provide maximum digging performance while keeping the versatility and convenience of a coupler. Tip radius is reduced and allows up to 10% improvement in breakout force when compared to a conventional pin on bucket and coupler combination.

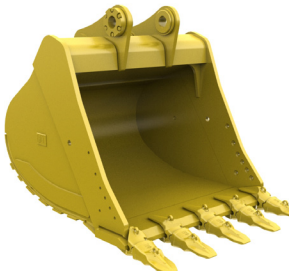
Pin Grabber Performance Buckets are available for 315–349 excavators, in General Purpose and Severe Duty durability.



Power

Power Buckets are for use in abrasive applications where breakout force and cycle times are critical — and for use in materials such as tightly compacted mixed dirt and rock. (Not recommended for clay.) Breakout force is maximized due to decreased tip radius and increased pin spread. Machine cycle times in most material is improved over a standard bucket in a similar application.

Heavy Duty Power Buckets are available for 320–336 excavators.



Wide Tip

Wide Tip Buckets are intended to perform best in low-impact materials such as dirt and loam where leaving a smoother floor and minimal spillage is necessary. The bucket is engineered to be used exclusively with Cat Wide Tips. Corner adapters face straight forward to create a smooth edge.

General Duty Wide Tip Buckets are available in widths from 24" to 78" for 311–349 excavators.

High Capacity

High Capacity Buckets are designed and built for use in high production truck loading applications. With proper application and set up, these buckets will move more material in a minimal amount of passes — maximizing production.

High Capacity Buckets are available for 336–390 excavators, in General Duty durability.

K Series Ground Engaging Tools (GET)

Penetration & Protection

Choosing the right GET is important to getting the highest return on your machine investment. Ground Engaging Tools protect the expensive parts of your buckets and the resulting longer life reduces your maintenance costs. GET also play a big part in determining how well your machine performs in a specific application.

Visit your Cat dealer to understand the many ground engaging tool options and for technical assistance in selecting the tool you need for each specific job.

Penetration Plus



Recommended for most excavator applications including high impact trenching, excavation and loading. Good penetration. Stays sharp.

Penetration



Recommended for harder-to-penetrate, moderate impact, lower abrasive materials. Very good penetration, less wear material, stays sharp.

General Duty



Recommended for general excavation and loading in moderate impact and abrasive conditions. Moderate penetration, self-sharpening cavities.

Heavy Abrasion



Use on larger machines when working in sand, gravel and shot rock. Maximum wear material.

Extra Duty



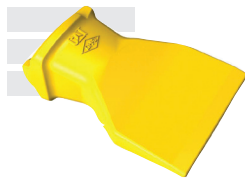
Recommended for general excavation and loading requiring more wear material in moderate impact conditions. Moderate penetration.

Spike



Recommended for maximum penetration, especially in cohesive materials. Excellent penetration, less wear material, stays sharp. (Use Double Spike in corners.)

Wide



Recommended for easy-to-penetrate trenching applications where smooth floors are required.

Double Spike



Recommended for harder-to-penetrate, fracturable materials. Very good penetration, stays sharp. Use in corner positions with Spike centers.

Sidebar Protection for Your Bucket



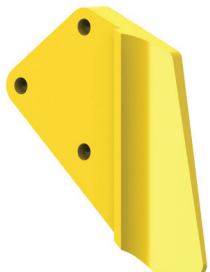
Sidebar Protector

Protects sidebars from wear and damage. Pins on for easy removal and installation. Can be stacked, one above the other on the side of the bucket for more protection.



Heavy Duty Sidecutter

For tough digging conditions. More wear material. Covers more of sidebar for enhanced protection of the bucket. Scalloped profile improves bucket penetration and machine performance.



General Purpose Sidecutter

Effective in moderate-impact conditions. Suitable for most soil conditions. Provides a strong, wear-resistant surface to help protect bucket sides. Extends bucket side width to match the teeth bite.



Strikeoff Sidecutter

Half-arrow shaped to provide better penetration than bare bucket, while protecting the lower bucket sides and corners. Use in moderate-to-light conditions. Can be stacked for more protection.

Cat Hydraulic Excavator Buckets

Quick Couplers

Quick Couplers make Cat Work Tool attachments interchangeable, so a fleet of machines can share a common tool inventory. Quick Couplers make it easy for one man to switch tools, and one machine to switch from task to task. Quick Couplers increase the machine's versatility on the job site.

Caterpillar offers buckets hinged for each of these coupler styles:

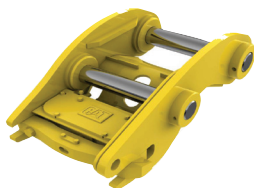
Pin Grabber Coupler

- Pin grabber style Couplers allow the machine to pick up and engage virtually any bucket and Work Tool attachment equipped with standard pins. No modifications are required.
- Easy to activate, easy to engage. It's the easiest way to improve productivity on your job site.
- Coupler is weighted right to allow big bucket payloads. It is sized right to maintain excellent breakout force and digging power.
- Available for 311–390 excavators.



Dedicated Coupler

- Engages tools equipped with hooks. Weld-on or bolt on hooks are available for Multi-processors, Compactors, Hammers and most Buckets.
- Tip radius of Dedicated Coupler Buckets is identical to pin on. Full breakout forces is available at all times.
- Both hydraulic and manual versions are available.



Thumbs

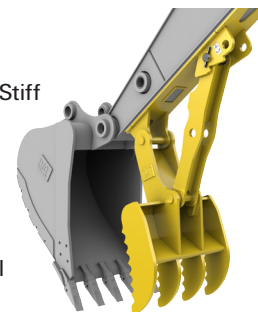
Equipping your excavator with a thumb upgrades the performance of your bucket-equipped machine from digging to material handling.

Thumb and bucket work together to grab, pick and sort. During digging, the thumb works with the bucket to help retain the load. When not in use, the thumb folds back against the stick and out of the way.

Cat provides four solutions, each one well-suited for use in a variety of industries and tasks including site preparation and clean up, land clearing, forestry, and residential demolition.

Stiff Link Thumb

- One person can easily position a Cat Stiff Link Thumb without extra tools or assistance.
- An alignment system allows the operator to position the thumb from inside the cab utilizing the bucket curl motion.
- The alignment indicator gives a visual cue to the operator when the thumb is positioned and ready to accept the link positioning pin.



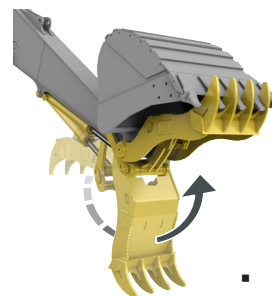
Utility Hydraulic Thumbs

- Utility Thumbs are narrow in width for good visibility. They are well-suited for light- to medium-duty tasks like handling brush, rocks, and construction debris.
- Because they mount to the face of the excavator stick, they are compatible with a wide range of machine, bucket and coupler combinations. One thumb will work well with various combinations found in mixed fleets.



Pro Series Hydraulic Thumbs

- The thumb choice for performance and compatibility with today's Cat excavators, buckets and couplers. Pro Series Thumbs provide precise material placement and load control with your Cat-on-Cat system.
- Pro Series Thumbs mount on the bucket pin and move along the same arc as the bucket edge, providing solid grip and precision throughout the bucket's motion.
- Two Pro Series choices are available: Pro Plus thumbs cover the bucket through 100% of its rotation while Pro thumbs cover up to 70% of the buckets rotation.



Buckets for 311–390 Excavators

The following pages illustrate the range of Buckets available for 311–390 Cat Excavators. Buckets listed are hinged for use as pin on or with a pin grabber coupler unless indicated otherwise. Contact your local Cat dealer to select the right bucket for the specific configuration of your machine and intended application.

311F, 312E, 313F GC, 314E

Width mm (in)	Capacity m ³ (yd ³)	Weight kg (lb)
------------------	---	-------------------

General Duty

450 (18)	0.20 (0.27)	266 (585)
600 (24)	0.31 (0.40)	313 (690)
750 (30)	0.41 (0.54)	357 (787)
900 (36)	0.53 (0.69)	403 (888)
1,050 (42)	0.65 (0.84)	446 (984)
1,200 (48)	0.76 (1.00)	487 (1,074)

Wide Tip*

450 (18)	0.27 (0.35)	317 (699)
600 (24)	0.41 (0.54)	371 (818)
900 (36)	0.71 (0.92)	472 (1,041)
1,050 (42)	0.86 (1.12)	527 (1,162)
1,200 (48)	1.00 (1.33)	579 (1,276)

Dedicated Coupler Hinge

600 (24)	0.30 (0.39)	314 (693)
900 (36)	0.52 (0.68)	404 (890)
1,050 (42)	0.64 (0.83)	445 (982)

Severe Duty

600 (24)	0.31 (0.40)	351 (774)
750 (30)	0.41 (0.54)	403 (888)
900 (36)	0.53 (0.69)	456 (1,005)
1,050 (42)	0.65 (0.84)	502 (1,106)

Heavy Duty Rock

Dedicated Coupler Hinge

600 (24)	0.30 (0.39)	377 (831)
900 (36)	0.52 (0.68)	471 (1,037)
1,050 (42)	0.63 (0.82)	515 (1,134)

Clean-up

1,500 (60)	1.02 (1.33)	630 (1,389)
------------	-------------	-------------

Ditch Cleaning

1,200 (48)	0.57 (0.74)	389 (858)
1,500 (60)	0.74 (0.97)	456 (1,005)

Dedicated Coupler Hinge

1,500 (60)	0.74 (0.97)	465 (1,025)
------------	-------------	-------------

Ditch Cleaning Tilt

1,500 (60)	0.57 (0.75)	514 (1,133)
------------	-------------	-------------

316E, M313D, M315D, M318F

Width mm (in)	Capacity m ³ (yd ³)	Weight kg (lb)
------------------	---	-------------------

General Duty

600 (24)	0.35 (0.46)	429 (945)
750 (30)	0.49 (0.64)	481 (1,060)
900 (36)	0.62 (0.81)	522 (1,150)
1,050 (42)	0.76 (1.00)	569 (1,255)
1,200 (48)	0.91 (1.19)	625 (1,378)

316E, M313D, M315D, M318F (cont.)

Width mm (in)	Capacity m ³ (yd ³)	Weight kg (lb)
------------------	---	-------------------

Wide Tip*

600 (24)	0.42 (0.55)	449 (990)
750 (30)	0.58 (0.75)	506 (1,116)
1,050 (42)	0.90 (1.18)	635 (1,400)
1,200 (48)	1.17 (1.53)	700 (1,543)

General Duty (cont.)

Pin Grabber Performance

600 (24)	0.33 (0.43)	413 (910)
900 (36)	0.57 (0.75)	539 (1,188)

Dedicated Coupler Hinge

600 (24)	0.42 (0.55)	406 (896)
900 (36)	0.73 (0.95)	522 (1,150)
1,050 (42)	0.92 (1.20)	570 (1,257)

Severe Duty

600 (24)	0.35 (0.46)	480 (1,058)
750 (30)	0.49 (0.64)	543 (1,197)
900 (36)	0.62 (0.81)	618 (1,341)
1,050 (42)	0.76 (1.00)	663 (1,462)
1,200 (48)	0.91 (1.19)	730 (1,609)

Pin Grabber Performance

1,050 (42)	0.70 (0.92)	664 (1,464)
1,200 (48)	0.83 (1.09)	731 (1,612)

Heavy Duty Rock

Dedicated Coupler Hinge

600 (24)	0.42 (0.55)	515 (1,135)
900 (36)	0.73 (0.95)	656 (1,446)
1,050 (42)	0.88 (1.15)	713 (1,573)

Clean-up

1,500 (60)	1.24 (1.62)	770 (1,698)
------------	-------------	-------------

Ditch Cleaning

1,500 (60)	0.93 (1.22)	582 (1,283)
1,820 (72)	1.14 (1.49)	663 (1,462)

Dedicated Coupler Hinge

1,820 (72)	1.14 (1.49)	662 (1,459)
------------	-------------	-------------

Ditch Cleaning Tilt

1,500 (60)	0.70 (0.87)	809 (1,783)
------------	-------------	-------------

318E

Width mm (in)	Capacity m ³ (yd ³)	Weight kg (lb)
------------------	---	-------------------

General Duty

900 (36)	0.62 (0.81)	538 (1,186)
1,050 (42)	0.76 (1.00)	598 (1,318)
1,200 (48)	0.91 (1.19)	661 (1,457)

Pin Grabber Performance

600 (24)	0.33 (0.43)	413 (910)
900 (36)	0.57 (0.75)	539 (1,188)

Heavy Duty

600 (24)	0.35 (0.46)	449 (990)
750 (30)	0.49 (0.64)	505 (1,113)
900 (36)	0.62 (0.81)	566 (1,248)
1,050 (42)	0.76 (1.00)	618 (1,362)
1,200 (48)	0.91 (1.19)	679 (1,497)

Severe Duty

900 (36)	0.62 (0.81)	625 (1,378)
1,050 (42)	0.76 (1.00)	683 (1,506)

Pin Grabber Performance

1,050 (42)	0.70 (0.92)	664 (1,464)
1,200 (48)	0.83 (1.09)	731 (1,612)

Clean-up

1,500 (60)	1.24 (1.62)	770 (1,698)
------------	-------------	-------------

318E (cont.)

Width mm (in)	Capacity m ³ (yd ³)	Weight kg (lb)
------------------	---	-------------------

Ditch Cleaning

1,500 (60)	0.93 (1.22)	582 (1,283)
------------	-------------	-------------

Ditch Cleaning Tilt

1,500 (60)	0.70 (0.87)	809 (1,783)
------------	-------------	-------------

M320F, 319D

Width mm (in)	Capacity m ³ (yd ³)	Weight kg (lb)
------------------	---	-------------------

General Duty

600 (24)	0.39 (0.50)	458 (1,010)
750 (30)	0.53 (0.69)	506 (1,116)
900 (36)	0.68 (0.88)	562 (1,239)
1,050 (42)	0.83 (1.09)	611 (1,347)
1,200 (48)	0.98 (1.29)	669 (1,475)
1,300 (51)	1.07 (1.41)	698 (1,539)
1,400 (55)	1.18 (1.54)	730 (1,609)

Heavy Duty

900 (36)	0.68 (0.88)	605 (1,335)
1,100 (43)	0.83 (1.09)	648 (1,429)
1,200 (48)	0.98 (1.29)	707 (1,559)

320E, 321DLCR, 323F, M322D (B Family)

Width mm (in)	Capacity m ³ (yd ³)	Weight kg (lb)
------------------	---	-------------------

General Duty

600 (24)	0.55 (0.72)	601 (1,324)
750 (30)	0.75 (0.98)	687 (1,516)
900 (36)	0.95 (1.24)	758 (1,671)
1,050 (42)	1.16 (1.52)	819 (1,805)
1,200 (48)	1.38 (1.80)	891 (1,964)
1,350 (54)	1.59 (2.08)	963 (2,124)

Wide Tip*

600 (24)	0.55 (0.72)	615 (1,356)
750 (30)	0.75 (0.98)	708 (1,560)
900 (36)	0.95 (1.24)	784 (1,728)
1,050 (42)	1.16 (1.52)	860 (1,895)
1,200 (48)	1.38 (1.80)	938 (2,067)
1,350 (54)	1.59 (2.08)	1,016 (2,239)

Dedicated Coupler Hinge

1,200 (48)	1.38 (1.80)	956 (2,107)
------------	-------------	-------------

Heavy Duty

600 (24)	0.46 (0.61)	629 (1,387)
750 (30)	0.64 (0.84)	721 (1,590)
900 (36)	0.81 (1.06)	792 (1,746)
1,050 (42)	1.00 (1.31)	846 (1,866)
1,200 (48)	1.19 (1.56)	931 (2,052)
1,350 (54)	1.38 (1.81)	1,006 (2,217)

Power

900 (36)	0.79 (1.03)	808 (1,781)
1,050 (42)	0.96 (1.26)	873 (1,925)
1,200 (48)	1.14 (1.49)	952 (2,099)

Pin Grabber Performance

600 (24)	0.44 (0.57)	656 (1,446)
750 (30)	0.60 (0.79)	751 (1,656)
900 (36)	0.76 (1.00)	830 (1,830)
1,050 (42)	0.93 (1.22)	894 (1,972)
1,200 (48)	1.11 (1.45)	975 (2,150)
1,350 (54)	1.28 (1.67)	1,056 (2,328)

* Weights include tips.

Cat Hydraulic Excavator Buckets

Buckets for 311–390 Excavators

320E, 321DLCR, 323F, M322D (B Family) (cont.)

Width		Capacity		Weight	
mm	(in)	m ³	(yd ³)	kg	(lb)
Dedicated Coupler Hinge					
675	(27)	0.54	(0.71)	701	(1,545)
900	(36)	0.82	(1.07)	832	(1,833)
1,050	(42)	1.00	(1.31)	895	(1,973)
1,200	(48)	1.19	(1.55)	962	(2,121)
1,350	(54)	1.37	(1.80)	1,036	(2,285)

Severe Duty

600	(24)	0.46	(0.61)	674	(1,485)
750	(30)	0.64	(0.84)	775	(1,709)
900	(36)	0.81	(1.06)	855	(1,884)
1,050	(42)	1.00	(1.31)	930	(2,050)
1,200	(48)	1.19	(1.56)	1,012	(2,231)

Power

900	(36)	0.79	(1.03)	874	(1,926)
-----	------	------	--------	-----	---------

Clean-up

1,800	(72)	1.60	(2.09)	979	(2,158)
-------	------	------	--------	-----	---------

Ditch Cleaning

1,500	(60)	1.01	(1.32)	652	(1,437)
1,800	(72)	1.24	(1.62)	740	(1,631)

Dedicated Coupler Hinge

1,500	(60)	1.01	(1.32)	686	(1,512)
-------	------	------	--------	-----	---------

Ditch Cleaning Tilt

1,500	(60)	0.86	(1.12)	1,032	(2,275)
1,800	(72)	0.96	(1.25)	1,104	(2,433)

326F, 328DCR, 329F (CB Family)

Width		Capacity		Weight	
mm	(in)	m ³	(yd ³)	kg	(lb)

General Duty

600	(24)	0.63	(0.83)	704	(1,552)
750	(30)	0.86	(1.13)	784	(1,728)
900	(36)	1.09	(1.43)	874	(1,927)
1,050	(42)	1.34	(1.75)	946	(2,086)
1,200	(48)	1.58	(2.07)	1,031	(2,273)
1,350	(54)	1.83	(2.40)	1,118	(2,464)

Wide Tip*

600	(24)	0.63	(0.83)	729	(1,607)
750	(30)	0.86	(1.13)	818	(1,802)
900	(36)	1.09	(1.43)	908	(2,001)
1,050	(42)	1.34	(1.75)	988	(2,178)
1,200	(48)	1.58	(2.07)	1,082	(2,385)
1,350	(54)	1.83	(2.40)	1,176	(2,592)

Dedicated Coupler Hinge

1,350	(54)	1.83	(2.40)	1,156	(2,549)
-------	------	------	--------	-------	---------

Heavy Duty

600	(24)	0.52	(0.68)	734	(1,619)
750	(30)	0.71	(0.93)	818	(1,803)
900	(36)	0.91	(1.19)	897	(1,977)
1,050	(42)	1.12	(1.46)	976	(2,151)
1,200	(48)	1.33	(1.74)	1,047	(2,309)
1,350	(54)	1.54	(2.02)	1,131	(2,493)
1,500	(60)	1.76	(2.30)	1,218	(2,686)
1,650	(66)	1.97	(2.58)	1,290	(2,844)

Power

1,050	(42)	1.12	(1.47)	1,006	(2,218)
1,200	(48)	1.33	(1.73)	1,084	(2,389)
1,350	(54)	1.53	(2.01)	1,176	(2,592)

* Weights include tips.

326F, 328DCR, 329F (CB Family) (cont.)

Width		Capacity		Weight	
mm	(in)	m ³	(yd ³)	kg	(lb)

Heavy Duty

Pin Grabber Performance					
750	(30)	0.70	(0.91)	839	(1,849)
1,200	(48)	1.28	(1.65)	1,123	(2,475)
1,350	(54)	1.49	(1.94)	1,217	(2,683)
1,500	(60)	1.69	(2.21)	1,311	(2,890)

Dedicated Coupler Hinge

900	(36)	0.93	(1.22)	924	(2,037)
1,050	(42)	1.14	(1.49)	1,003	(2,211)
1,200	(48)	1.35	(1.77)	1,075	(2,370)
1,350	(54)	1.57	(2.05)	1,161	(2,560)

Severe Duty

600	(24)	0.52	(0.68)	781	(1,721)
750	(30)	0.71	(0.93)	873	(1,925)
900	(36)	0.91	(1.19)	961	(2,119)
1,050	(42)	1.12	(1.46)	1,049	(2,314)
1,200	(48)	1.33	(1.74)	1,130	(2,491)

Pin Grabber Performance

600	(24)	0.51	(0.66)	794	(1,750)
900	(36)	0.88	(1.16)	1,021	(2,250)
1,050	(42)	1.08	(1.42)	1,118	(2,465)
1,200	(48)	1.28	(1.68)	1,207	(2,661)

Clean-up

1,800	(72)	1.81	(2.37)	1,146	(2,527)
-------	------	------	--------	-------	---------

Ditch Cleaning

1,500	(60)	1.23	(1.61)	839	(1,849)
1,800	(72)	1.52	(1.99)	950	(2,094)

Dedicated Coupler Hinge

1,800	(72)	1.52	(1.99)	954	(2,103)
-------	------	------	--------	-----	---------

Ditch Cleaning Tilt

1,800	(72)	1.14	(1.50)	1,531	(3,374)
-------	------	------	--------	-------	---------

336F, 336F XE (DB Family)

Width		Capacity		Weight	
mm	(in)	m ³	(yd ³)	kg	(lb)

General Duty

750	(30)	0.94	(1.23)	924	(2,037)
900	(36)	1.19	(1.56)	1,002	(2,209)
1,050	(42)	1.46	(1.91)	1,100	(2,424)
1,200	(48)	1.73	(2.26)	1,185	(2,613)
1,350	(54)	2.00	(2.62)	1,285	(2,833)
1,500	(60)	2.27	(2.98)	1,384	(3,052)
1,650	(66)	2.55	(3.33)	1,470	(3,240)

Wide Tip*

800	(32)	1.18	(1.54)	1,042	(2,298)
950	(38)	1.49	(1.95)	1,137	(2,508)
1,100	(44)	1.46	(1.91)	1,154	(2,545)
1,250	(50)	1.73	(2.26)	1,240	(2,733)
1,400	(56)	2.00	(2.62)	1,351	(2,979)
1,550	(62)	2.27	(2.98)	1,463	(3,225)

Dedicated Coupler Hinge

1,500	(60)	2.28	(2.98)	1,394	(3,073)
-------	------	------	--------	-------	---------

336F, 336F XE (DB Family) (cont.)

Width		Capacity		Weight	
mm	(in)	m ³	(yd ³)	kg	(lb)

Heavy Duty

750	(30)	0.73	(0.95)	995	(2,194)
900	(36)	0.95	(1.24)	1,130	(2,490)
1,050	(42)	1.17	(1.54)	1,219	(2,688)
1,200	(48)	1.40	(1.84)	1,338	(2,949)
1,350	(54)	1.64	(2.14)	1,433	(3,160)
1,500	(60)	1.88	(2.46)	1,552	(3,421)
1,650	(66)	2.12	(2.77)	1,670	(3,683)
1,800	(72)	2.36	(3.08)	1,767	(3,896)

Power

900	(36)	0.95	(1.24)	1,123	(2,476)
1,200	(48)	1.40	(1.83)	1,341	(2,956)
1,350	(54)	1.63	(2.13)	1,439	(3,173)
1,500	(60)	1.86	(2.43)	1,561	(3,441)

Pin Grabber Performance

900	(36)	0.87	(1.14)	1,158	(2,553)
1,050	(42)	1.08	(1.42)	1,261	(2,779)
1,200	(48)	1.29	(1.69)	1,378	(3,038)
1,350	(54)	1.50	(1.97)	1,479	(3,261)
1,500	(60)	1.72	(2.25)	1,603	(3,535)
1,650	(66)	1.93	(2.52)	1,728	(3,809)

Dedicated Coupler Hinge

750	(30)	0.73	(0.96)	962	(2,128)
900	(36)	0.96	(1.25)	1,106	(2,438)
1,050	(42)	1.18	(1.54)	1,198	(2,641)
1,200	(48)	1.41	(1.84)	1,319	(2,908)
1,350	(54)	1.64	(2.14)	1,417	(3,124)
1,500	(60)	1.87	(2.45)	1,538	(3,391)

Severe Duty

750	(30)	0.73	(0.95)	1,060	(2,336)
900	(36)	0.95	(1.24)	1,204	(2,655)
1,050	(42)	1.17	(1.54)	1,305	(2,876)
1,200	(48)	1.40	(1.84)	1,433	(3,160)
1,350	(54)	1.64	(2.14)	1,539	(3,393)

Pin Grabber Performance

750	(30)	0.68	(0.88)	1,063	(2,344)
900	(36)	0.87	(1.14)	1,235	(2,724)
1,200	(48)	1.29	(1.69)	1,476	(3,254)
1,350	(54)	1.50	(1.97)	1,588	(3,501)

Extreme Duty

1,200	(48)	1.40	(1.84)	1,596	(3,519)
-------	------	------	--------	-------	---------

Clean-up

1,800	(72)	2.48	(3.24)	1,444	(3,184)
-------	------	------	--------	-------	---------

Dedicated Coupler

1,800	(72)	2.48	(3.24)	1,416	(3,122)
2,100	(83)	2.91	(3.81)	1,567	(3,455)

Ditch Cleaning

1,800	(72)	1.96	(2.57)	1,147	(2,528)
-------	------	------	--------	-------	---------

Dedicated Coupler Hinge

1,800	(71)	1.96	(2.57)	1,291	(2,845)
-------	------	------	--------	-------	---------

Buckets for 311–390 Excavators

349F (TB Family)

Width mm (in)	Capacity		Weight	
	m ³	(yd ³)	kg	(lb)

General Duty

750 (30)	0.95	(1.24)	1,275	(2,811)
900 (36)	1.23	(1.60)	1,393	(3,071)
1,050 (42)	1.51	(1.98)	1,477	(3,256)
1,200 (48)	1.80	(2.36)	1,616	(3,563)
1,350 (54)	2.10	(2.74)	1,732	(3,818)
1,500 (60)	2.39	(3.13)	1,871	(4,125)
1,700 (68)	2.78	(3.64)	2,044	(4,056)
1,850 (74)	3.08	(4.04)	2,170	(4,784)

High Capacity

2,000 (80)	3.82	(5.00)	2,373	(5,232)
------------	------	--------	-------	---------

Wide Tip*

900 (36)	1.35	(1.77)	1,457	(3,212)
1,350 (54)	2.22	(2.90)	1,879	(4,142)
1,500 (60)	2.52	(3.29)	1,995	(4,398)
1,650 (66)	2.81	(3.68)	2,149	(4,738)
1,800 (72)	3.11	(4.07)	2,266	(4,996)
1,950 (78)	3.41	(4.46)	2,420	(5,335)

Heavy Duty

900 (36)	1.08	(1.41)	1,546	(3,409)
1,050 (42)	1.34	(1.75)	1,636	(3,607)
1,200 (48)	1.60	(2.09)	1,774	(3,912)
1,350 (54)	1.87	(2.44)	1,902	(4,193)
1,500 (60)	2.14	(2.80)	2,053	(4,527)
1,650 (66)	2.41	(3.15)	2,202	(4,855)
1,800 (72)	2.69	(3.52)	2,339	(5,156)

Pin Grabber Performance

1,200 (48)	1.49	(1.95)	1,870	(4,122)
1,350 (54)	1.74	(2.27)	2,003	(4,416)
1,500 (60)	1.98	(2.59)	2,161	(4,764)
1,650 (66)	2.23	(2.91)	2,319	(5,112)
1,850 (74)	2.56	(3.34)	2,501	(5,514)

Severe Duty

750 (30)	0.88	(1.15)	1,410	(3,109)
900 (36)	1.08	(1.41)	1,629	(3,592)
1,050 (42)	1.34	(1.75)	1,731	(3,815)
1,200 (48)	1.60	(2.09)	1,892	(4,171)
1,400 (55)	1.87	(2.44)	2,104	(4,638)
1,550 (61)	2.14	(2.80)	2,286	(5,039)
1,700 (67)	2.41	(3.16)	2,429	(5,355)
1,850 (74)	2.69	(3.52)	2,612	(5,759)

Extreme Duty

1,250 (49)	1.60	(2.09)	2,148	(4,735)
1,400 (55)	1.87	(2.44)	2,290	(5,048)

349F (UB Family)

Width mm (in)	Capacity		Weight	
	m ³	(yd ³)	kg	(lb)

Heavy Duty

1,650 (65)	2.77	(3.62)	2,486	(5,481)
1,850 (73)	3.19	(4.16)	2,646	(5,833)
1,950 (77)	3.43	(4.48)	2,803	(6,180)

Severe Duty

1,450 (58)	2.39	(3.13)	2,464	(5,432)
1,850 (73)	3.21	(4.20)	2,892	(6,375)

* Weights include tips.

374F (VB2 Family)

Width mm (in)	Capacity		Weight	
	m ³	(yd ³)	kg	(lb)

General Duty

1,900 (75)	3.80	(5.00)	3,565	(7,859)
------------	------	--------	-------	---------

High Capacity

2,000 (79)	4.60	(6.00)	3,922	(8,646)
------------	------	--------	-------	---------

Heavy Duty

1,220 (48)	2.20	(2.90)	2,799	(6,170)
1,700 (66)	3.30	(4.30)	3,405	(7,507)
1,900 (75)	3.80	(5.00)	3,726	(8,214)

Severe Duty

1,100 (43)	1.90	(2.50)	2,474	(6,056)
1,525 (60)	2.90	(3.90)	3,329	(7,339)
1,700 (66)	3.30	(4.30)	3,529	(7,780)
1,900 (75)	3.80	(5.00)	3,861	(8,512)

Extreme Duty

1,900 (75)	3.80	(5.00)	4,682	(10,322)
------------	------	--------	-------	----------

374F (WB2 Family)

Width mm (in)	Capacity		Weight	
	m ³	(yd ³)	kg	(lb)

Heavy Duty

2,250 (89)	5.30	(7.00)	4,591	(10,119)
------------	------	--------	-------	----------

Severe Duty

1,900 (75)	4.00	(5.25)	4,661	(10,276)
2,000 (79)	4.40	(5.75)	4,818	(10,622)

Extreme Duty

2,000 (79)	4.40	(5.75)	5,787	(12,758)
2,100 (83)	4.60	(6.00)	6,060	(13,360)

390F (HB2 Family)

Width mm (in)	Capacity		Weight	
	m ³	(yd ³)	kg	(lb)

General Duty

1,350 (54)	3.00	(4.00)	3,282	(7,236)
1,650 (66)	3.00	(5.10)	3,670	(8,091)
1,900 (75)	4.60	(6.00)	4,000	(8,818)

High Capacity

2,000 (79)	5.30	(7.00)	4,245	(9,359)
------------	------	--------	-------	---------

Severe Duty

1,100 (43)	2.30	(3.00)	3,189	(7,030)
1,350 (54)	3.00	(4.00)	3,612	(7,963)
1,650 (66)	3.90	(5.10)	4,039	(8,904)
2,900 (75)	4.60	(6.00)	4,398	(9,696)

390F (JC Family)

Width mm (in)	Capacity		Weight	
	m ³	(yd ³)	kg	(lb)

General Duty

2,300 (91)	5.70	(7.40)	5,576	(12,293)
2,420 (95)	6.00	(7.90)	5,758	(12,694)

High Capacity

2,575 (101)	6.50	(8.50)	5,992	(13,210)
-------------	------	--------	-------	----------

Severe Duty

1,960 (77)	4.60	(6.00)	5,858	(12,915)
2,240 (88)	5.40	(7.10)	6,438	(14,193)
2,440 (96)	6.00	(7.90)	6,878	(15,163)

Extreme Duty

2,090 (82)	5.00	(6.50)	7,358	(16,221)
2,090 (82)	5.00	(6.50)	7,455	(16,435)



Cat Hydraulic Excavator Buckets

More Work Tool Attachments for Excavators

Caterpillar offers a complete range of Work Tool attachments for excavators.



Compactors

Cat Compactors are available in four models (CVP16, CVP40, CVP75 and CVP110) for excavators up to 336 size.



Hammers

Cat Hammers are available in models ranging from H35 through H180 and can be used on excavators up to 374 size.



Scrap & Demolition Shears

Scrap & Demolition Shears with 360° rotation are available in six models and can be used on 303.5 to 390 size excavators.



Secondary Pulverizers

Pulverizers are available in three models (P215, P225, P235). They are sized for use on 315–349 excavators.



Multi-Processors

Multi-Processors are available in four models (MP318, MP324, MP30 and MP40) with six different jaw options. They are available for 318–390 size excavators.



Contractors' Grapples

2-over-3 tines penetrate deeply into rock, scrap and debris piles. Eight models are available for 311–390 size excavators. Widths range from 375–1,000L (0.49–1.31 yd³).



Demolition & Sorting Grapples

360° rotation makes this grapple a key work tool for demolition, salvage and recycling operations. Five models are available for 311–349 size excavators. Capacities range from 375–1,000L (0.49–1.31 yd³)



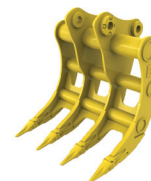
Trash Grapples

Wide jaws and 4-over-5 tines effectively handle solid waste, wood chips and other low density material. Five models are available for 311–336 size excavators. Capacities range from 1.7–5.5m³ (2.2–7.25 yd³).



Rippers

Rippers are available for 315 size excavators and up.



Rakes

Rakes are available for 320 through 336 size excavators.

For more information on the variety of Work Tool attachments available for Excavators contact your local Cat dealer.

Hydraulic Solutions

- Caterpillar provides field-installed hydraulic kits connecting Work Tools attachments to current and non-current excavators.
- Compatibility and performance with the Cat Work Tool attachments and Cat excavator is guaranteed.
- Hydraulic Kits are backed up by complete after-sale support, all from one industry-leading supplier: Caterpillar.
- Available for 311–390 excavators.

For more complete information on Cat products, dealer services, and industry solutions, visit us on the web at www.cat.com

GEHQ0201-12 (05-15)

©2015 Caterpillar
All Rights Reserved

Materials and specifications are subject to change without notice. Featured machines in photos may include additional equipment. See your Cat dealer for available options.

CAT, CATERPILLAR, their respective logos, "Caterpillar Yellow," and the POWER EDGE trade dress, as well as corporate and product identity used herein, are trademarks of Caterpillar and may not be used without permission.

