

# B458 TRACK FELLER BUNCHER



## POWERFUL PERFORMANCE.

Excellent multi-function capability through dedicated hydraulic pumps and optimized circuit configurations. Performance boosted by efficient travel speeds, maximum stability, and strong combination of lift capacity, swing torque, and tractive effort.



## UNOBSTRUCTED GROUND CLEARANCE.

Elevated, unobstructed carbody with 35" (881 mm) of ground clearance enables unimpeded travel over rocks, stumps, and other debris. Leveling cylinders do not extend below the bottom surface of the carbody, minimizing potential interference.



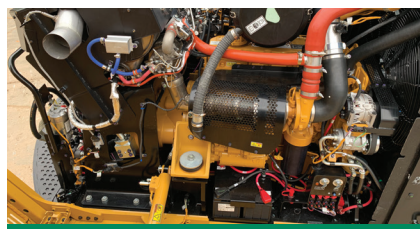
## PURPOSE BUILT FOR STEP SLOPES.

Variable gauge, eleven roller extended track frame option, provides maximum stability for steep slopes. Innovative ease-of-use features, such as the ability to reduce the frequency of foot pedal motions, improves operator efficiency.



## MAXIMUM OPERATOR COMFORT.

New cab maximizes operator experience through increased space, improved visibility, easier access, and options that include a heated and cooled seat, deluxe lights, and cameras. Machine controls feature an easy to use operator interface.



## PROVEN RELIABILITY AND DURABILITY.

Forestry-duty cooling package and extensive validation of key common components that includes the engine, swing system, and grease-lubricated Cat® 336 HD HEX undercarriage ensure machine uptime and reduce operating costs.



## EXCELLENT SERVICEABILITY.

Counterweight walkway enables machine level access to gull-wing engine enclosure that provides unmatched serviceability of components. Enclosure provides a flat area to complete preventative maintenance and service.



# B458 SPECIFICATIONS

<b>Engine Model</b>	Cat® C9.3 Tier 4 Final	<b>Tractive Effort</b>	81,229 lbf 36 845 kgf	<b>Fuel Tank Capacity</b>	216 gal 819 L
<b>Gross Power</b>	298 hp 222 kW	<b>Undercarriage Size</b>	336 HD HEX	<b>Engine Oil Capacity</b>	10.6 gal 40 L
<b>Engine Displacement</b>	568 in³ 9.3 L	<b>Undercarriage Pitch</b>	8.5" 216 mm	<b>Hydraulic System Capacity</b>	79.8 gal 302 L
<b>Weight (no head)</b>	79,221 lb 35 934 kg	<b>Ground Clearance</b>	35" 881 mm	<b>Transport Width</b>	11' 11" 3.62 m
<b>Maximum Flow</b>	322 gpm 1220 L/min	<b>Track Gauge</b>	114" 2883 mm	<b>Height</b>	12' 11" 3.94 m
<b>Max. Reach (w/ 201 saw)</b>	26' 10" 8.19 m	<b>Track Length</b>	191" 4856 mm	<b>Length (boom ext., w/201 saw)</b>	34' 1" 10.39 m
<b>Lift at Max. Reach (no head)</b>	13,918 lb 6313 kg	<b>Leveling System Capability</b>	21° Forward 11° Side-to-Side	<b>Length (boom tuck., no head)</b>	25' 7" 7.81 m

Base configuration includes standard feller buncher boom and stick, roller frames in the wide position, and 28" (710 mm) single grouser shoes.

## POWERTRAIN

Cat C9.3 engine certified to EPA Tier 4 Final  
 Primary, secondary, and tertiary fuel filters, including water separator  
 Side-by-side radiator and oil cooler  
 Swing out air-to-air cooler and air conditioner condenser  
 Removable debris screen  
 Centrifugal engine air pre-cleaner  
 Under-hood 2-stage engine air cleaner  
 Variable pitch, reversing fan with guard  
 Heavy-duty starter and ether aid

## UNDERCARRIAGE

Three-cylinder leveling system  
 Heavy-duty variable gauge track roller frames  
 Grease-lubricated 336 HD HEX track  
 Straddle mounted carrier rollers  
 Heavy-duty bottom track rollers  
 Heavy-duty recoil mechanisms  
 Full length track shoe support  
 Heavy-duty travel motor and swivel guards  
 Towing eyes on base frame

## HYDRAULICS

One hydraulic pump group for implement functions  
 One hydraulic pump group for track functions  
 Dedicated attachment pump for head functions  
 Dedicated saw pump  
 High-performance hydraulic return filters  
 325 size, high torque swing drive  
 Swing cushion valve and automatic swing parking brake  
 Electric hydraulic oil fill pump  
 Spare hose storage area

## ELECTRICAL

115 ampere alternator  
 24-volt electrical system with 2 12-volt batteries  
 9 LED working lights and 2 LED service lights  
 Horn and travel alarm  
 Secondary engine shut off switch  
 Product Link™ ready

## SALES AND SERVICE

Sold and serviced exclusively through Weiler Forestry dealers worldwide

[WEILERFORESTRY.COM](http://WEILERFORESTRY.COM)

## OPERATOR ENVIRONMENT

Enclosed FOPS/ROPS/OPS/OR-OSHA/WCB certified cab  
 Air suspension with integrated joysticks and head rest  
 Left-hand tilt console  
 Retractable 4-point seat belt  
 Touchscreen display monitor and programmable operator controls  
 Scratch resistant polycarbonate windows  
 Reverse slope 1.25" (32 mm) front windshield  
 Front window emergency escape  
 Skylight  
 Left-side fresh air window  
 Pressurized cab with filtered ventilation  
 Heater / air conditioner / defroster  
 Radio ready with speakers  
 Mount locations for CB radio and other accessories  
 Behind seat storage tray  
 Three cup holders, two USB sockets, and literature holder

## OTHER STANDARD EQUIPMENT

Heavy-duty hood enclosure  
 Heavy-duty counterweight with machine level engine enclosure access  
 Heavy-duty doors, covers, and bottom guards

## OPTIONAL EQUIPMENT

Standard feller buncher boom and stick  
 Intermittent saw boom and stick  
 Boom and stick omission  
 30 or 50 mm counterweight  
 Standard or extended roller frames (eleven bottom rollers)  
 Standard or star carrier rollers  
 24" (600 mm) SG 336 HD HEX Track  
 28" (710 mm) SG or DG 336 HD HEX Track  
 Std. or deluxe cab (heated-cooled seat / satellite radio / sun screens)  
 Standard deluxe lights (14 LED working lights)  
 Standard, cold, or arctic starting aid  
 201 continuous saw w/ partial or full tilt - 22.5" (572 mm)

## WARRANTY

12 months standard, extended warranty available

Materials and specifications are subject to change without notice.  
 Featured machines and photos may include optional equipment. All rights reserved.

B458 T4, SS (06-2020)