

# 568 GF/568 LL

FOREST MACHINES



Engine Power (ISO 14396)  
Operating Weight

259 kW (347 hp)  
GF 48 500 kg (106,920 lb)  
LL 49 300 kg (108,690 lb)





# CAT®

# 568

## MAKES BIG TIMBER WORK SIMPLER, SAFER, AND MORE SATISFYING

Are you having a hard time keeping operators? Is safety keeping you up at night? Do you just want a simple and reliable machine that will make your life in the woods more productive and enjoyable? The answer to all those questions is the **Cat® 568**.



**GENERAL FORESTRY**



**LOG LOADER**

### **NEXT GENERATION FOREST MACHINES**

Cat® next generation forest machines offer you more value than ever for your business.

- + MORE PERFORMANCE
- + GREATER COMFORT
- + ENHANCED SAFETY

Simply put, Cat next generation forest machines help you move more timber to make more money.

# DO MORE WORK WITH LESS COST

Increased power and efficiency coupled with decreased maintenance mean you will spend more time working instead of more money on filling the tank and changing oil and filters.

## IMPROVE PRODUCTION UP TO 10%<sup>1</sup>

Move heavy logs easily with more engine power, more swing power, and more travel power. If you need an additional boost for bigger timber, turn on heavy lift mode. It will automatically increase pressure and stay on until the task is done.

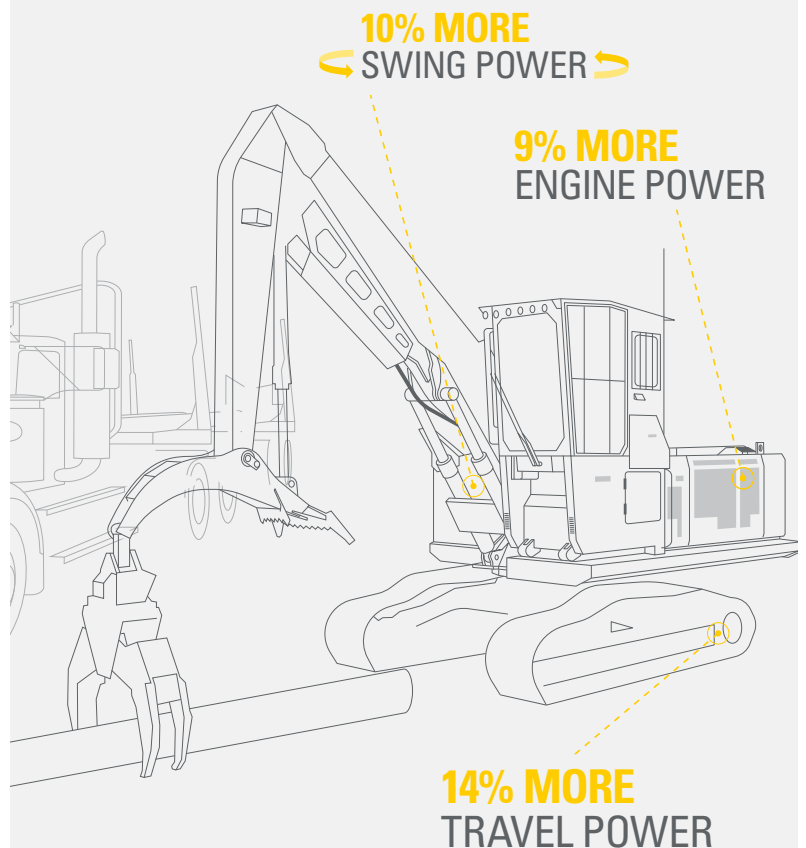
## IMPROVE FUEL EFFICIENCY UP TO 5%<sup>1</sup>

The Cat C9.3B engine and electrohydraulic control system work in sync to help you move big timber without burning truckloads of fuel. Just the right engine speed powering a large hydraulic pump ensures you get maximum production with each unit of fuel.

## LOWER MAINTENANCE COSTS UP TO 15%<sup>1&2</sup>

Experience increased uptime and reduced costs with new longer life fuel and hydraulic oil filters. Fuel filters have double the life of the previous filters, and the hydraulic oil return filter provides 50% more service life.

## GET MORE WORK DONE



<sup>1</sup> Compared to 2020 568 in Smart mode.

<sup>2</sup> Cost reduction based on 12,000 hours of operation.

# CHOICES FOR YOUR UNIQUE WORK

The General Forestry model is ideal for road work, grappling, and processing. The Log Loader model is the right choice for shovel logging, log loading, Butt-n-Top, Power Clam, and millyard applications.



## GENERAL FORESTRY

- + With a reach boom and quick coupler, you can equip the 568 with a processor, bucket, thumb, mulcher, and other attachments to get work done quickly and efficiently.
- + A frontless option allows you to customize the machine for your more unique applications.

## LOG LOADER

- + An under-mounted heel cylinder provides maximum force for shovel logging with a Cat grapple. A variable displacement pump delivers high-flow rotating capability for heel and log grapples as well as Power Clam and Butt-n-Top grapples.
- + An over-mounted heel cylinder provides maximum clearance to load trucks and increases lift height for millyard applications.







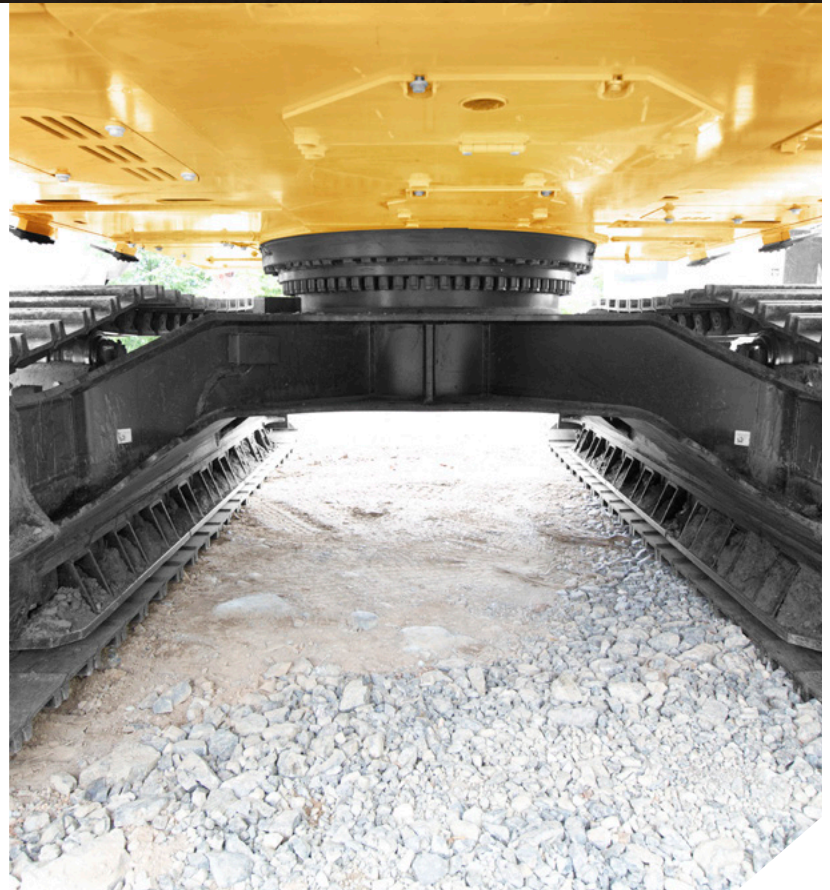
COUNT ON

# RELIABILITY AND DURABILITY

YOU CAN TRUST CATERPILLAR'S TIME-PROVEN ENGINEERING AND MANUFACTURING KNOW-HOW FOR EXCELLENT RELIABILITY AND DURABILITY. WITH EASY-TO-DO MAINTENANCE, ALL YOU HAVE TO DO IS PUSH THE START BUTTON AND GO TO WORK.

In addition to reinforced booms and sticks and heavy-duty base frame, a huge difference in overall Cat machine durability is the undercarriage. It is the link between the ground and upper body, and it absorbs many of the stresses between them. That's why we put so much effort into making ours better than competitors, starting with a more robust idler group and High Wide undercarriage to make traveling over stump-laden forests trouble free. In fact, the 568 undercarriage is built with many heavy-duty reinforcements.

- + HEAVY-DUTY TRACK ROLLERS
- + HEAVY-DUTY TRACK LINK
- + HEAVY-DUTY FINAL DRIVES
- + HEAVY-DUTY TRAVEL MOTOR GUARDS
- + HEAVY-DUTY RECOIL SPRINGS
- + HEAVY-DUTY SWIVEL AND SWIVEL GUARD







**CAB TAKES**

# THE HARD OUT OF WORK

**SITES WHERE THE 568 TYPICALLY WORK ARE RUGGED AND CHALLENGING. THAT'S WHY IT'S IMPORTANT THAT THE CAB KEEPS THE OPERATOR COMFORTABLE AND PROTECTED FROM FATIGUE, STRESSES, SOUNDS, AND OUTSIDE TEMPERATURES.**

## CERTIFIED FORESTRY

---

Available in a choice of rear or side entry, the Certified Forestry ROPS cab is sound suppressed, sealed, and 25% larger than the previous series' cab with a wider and taller door. Larger windows and lower front profile give you up to 50% greater visibility to the work and surrounding jobsite. Available cab risers put you in an even better position for greater logging, roadbuilding, and millyard efficiency.

## CLIMATE CONTROL

---

An all-new dual HVAC system keeps operators comfortable in either cold or warm weather. Other features include filtered positive ventilation and fresh air windows with guarding screens.

## SEAT AND JOYSTICK CONSOLE

---

The seat is heated and cooled to make work more pleasant in any weather. It's also wide and fully adjustable to fit the needs of all types of operators. The tilt-up console on the side-entry cab makes getting in and out of the seat easier, and all controls are located in front of you to reduce back-stressing twisting and turning.

## CONNECTIVITY AND STORAGE

---

Convenience features include Bluetooth® integrated radio, USB ports for charging and phone connectivity, 12V DC outlets and AUX port, cup and bottle holders, and storage in rear, overhead, and console compartments.



## TOUCHSCREEN MONITOR

Most machine settings can be controlled through the high-resolution touchscreen monitor. It offers multiple languages and is easy to reach from the seat with no twisting or turning.

## SMART MODE

Smart Mode automatically adjusts engine and hydraulic power for the highest fuel efficiency – less power for tasks such as swinging and more power for lifting. Operators can set and store their power mode preference using Operator ID; owners can lock in the mode they want their operators to use to help manage fuel consumption.

## CUSTOMIZABLE JOYSTICKS

Select joystick functions can be customized through the monitor. Joystick pattern as well as response can be set to match operator preference. All preferences are saved with Operator ID and restored at login. Make moving the machine much easier with Cat Stick Steer. Simply push a button and use one hand to travel and turn instead of both hands and feet on levers and pedals. Add an auxiliary relay and you can power on or turn off a CB radio or other attachment without taking your hands off the joysticks.

## KEYLESS PUSH START

Keyless push-button engine start adds security by using Operator ID codes to limit and track machine access. Codes can be entered manually or be bypassed using an optional Bluetooth key fob.



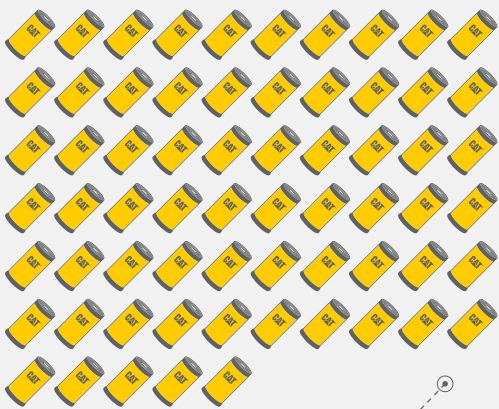


## LOWER MAINTENANCE COSTS WITH MORE UPTIME



### SAVE MONEY

THE NEXT GENERATION 568 CONSUMES  
**UP TO 65 FEWER FILTERS\***



FEWER FILTERS,  
LONGER INTERVALS,  
LESS COST,  
MORE PRODUCTIVITY

\*COMPARED TO PREVIOUS 568 OVER 12,000 HOURS

The 568's extended and synchronized service intervals mean you'll be able to spend more time working and up to 15% less in maintenance costs than the previous model.

#### KEY MAINTENANCE COST REDUCTIONS INCLUDE:

- + Consolidated filter locations and grease points to reduce service time
- + Hydraulic return filter with 3,000 hour service life – 50% longer than the previous filter
- + Fuel filters with 1,000 hour service life – twice as long as the previous filters
- + New high-efficiency hydraulic fan with programmable automatic reverse function to help keep cores clean
- + Scheduled Oil Sampling (S-O-S<sup>SM</sup>) ports to enable quick extraction of fluid samples and more simplified maintenance



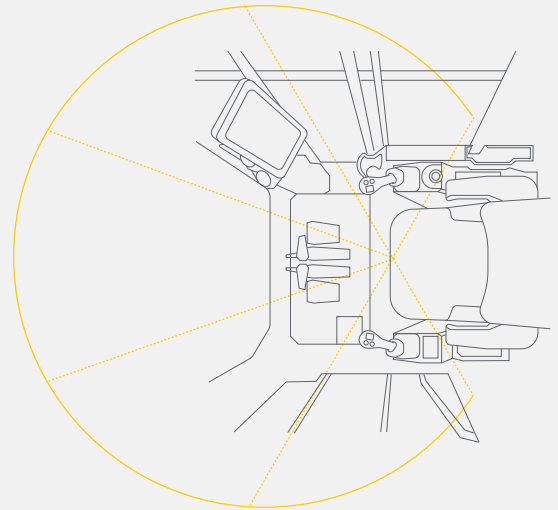


## BUILT FOR YOUR SAFETY AND OTHERS

Unique design, reinforced components, and special features and guards make the 568 safe, reliable, and durable.

- + Left- and right-hand-side fuel locations make the machine easier to refuel.
- + The standard ROPS cab has a larger 32 mm (1¼") polycarbonate front window, smaller cab pillars, and a flat engine hood to improve visibility by 50% over the previous series.
- + The carbody has heavy-duty bottom guards to make traveling over stumps and other obstacles trouble free.
- + Wide track gauge and available slope and grade indicator on the monitor help enhance stability and lift.
- + You can access most routine maintenance points at ground level. New right-hand steps provide safe and quick access to the upper service platform; the steps and service platform use anti-skid punch plate to prevent slipping.
- + Secure who can start the machine with Operator ID or use an optional Bluetooth key fob.
- + A standard rearview camera enhances jobsite visibility; an optional right-hand-sideview camera makes it even better.

## 50% GREATER VISIBILITY\*



\*CAT NEXT GENERATION 568 COMPARED TO PREVIOUS 568

# MAKE MANAGING EQUIPMENT EASIER WITH CAT EQUIPMENT MANAGEMENT

**Cat Equipment Management** helps take the complexity out of overseeing your jobsites by gathering data generated by your equipment, materials, and people and serving it up to you in customizable formats.



## PRODUCT LINK™

Product Link™ collects data automatically and accurately from your assets. Information such as location, hours, fuel usage, idle time, maintenance alerts, diagnostic codes, and machine health can be viewed online through web and mobile applications.

## VISIONLINK®

Access information anytime, anywhere with VisionLink® – and use it to make informed decisions that boost productivity, lower costs, simplify maintenance, and improve safety and security on your jobsite. With different subscription level options, your Cat dealer can help you configure exactly what you need to connect your fleet and manage your business without paying for extras you don't want. Subscriptions are available with cellular or satellite reporting (or both).



**Remote Services\*** is a suite of technologies that improve your jobsite efficiency.

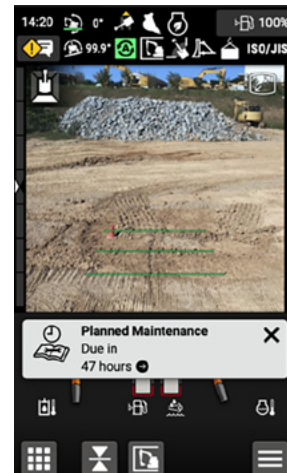
**Remote troubleshoot** allows your Cat dealer to perform diagnostic testing on your connected machine remotely, pinpointing potential issues while the machine is in operation. Remote troubleshoot ensures the technician arrives with the correct parts and tools the first time, eliminating additional trips to save you time and money.

**Remote flash** updates on-board software without a technician being present, potentially reducing update time by as much as 50%. You can initiate the update when convenient, increasing your overall operating efficiency.

\*Must be within cell range coverage.

## SERVICE REMINDERS MADE EASY

Boost productivity with proactive service reminders. The new integrated vehicle health management system alerts the operator with step-by-step service guidance along with parts needed so you don't experience any unnecessary downtime.





# INCREASE YOUR PRODUCTIVITY AND PROFIT WITH CAT ATTACHMENTS

Easily expand the performance of your machine by utilizing any of the variety of Cat attachments. Each Cat attachment is designed to fit the weight and horsepower of the Cat machine for improved performance, safety, and stability.



## GRAPPLES

Cat log loading grapples are made with high-strength steel for maximum performance. They are ideal for picking and sorting, bunching and loading, and shoveling applications. Bolt-on access panels make them easier to service.



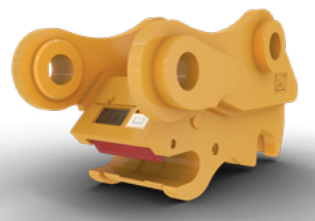
## MULCHERS

Cat forestry mulchers make land clearing fast and safe. Staggered teeth quickly turn trees into mulch; a hydraulically controlled door lets the operator direct mulch flow to enhance jobsite safety.



## BUCKETS

Cat buckets move material quickly and efficiently. Their unique design enables more efficient filling and better operator control, which improves overall productivity.



## COUPLERS

Cat quick couplers allow you to change between tools in minutes, making the machine capable of doing a variety of money-making tasks.



## ATTACHMENT TRACKING MADE EASY

The Cat PL161 Attachment Locator is a Bluetooth device that makes finding grapples, buckets, and other gear quick and easy. The excavator's onboard Bluetooth reader or Cat App on your phone will locate the device automatically.



# MORE THAN MACHINES



When you buy Cat equipment, you're getting so much more than the machine. You're also getting the support of a best-in-class dealer network backed by a range of flexible solutions, technology, tools, and more. It's all about support that's built around your success.

- + Customer Value Agreements (CVA)
- + Cost-saving service and repair options
- + Quality parts and precision components
- + Financing solutions
- + Rental and used equipment





# TECHNICAL SPECIFICATIONS

See [cat.com](http://cat.com) for complete specifications.

ENGINE			
Engine Model	C9.3B		
Net Power – ISO 9249:2007	257.9 kW	346 hp	
Engine Power – ISO 14396:2002	259 kW	347 hp	
Bore	115 mm	4.53 in	
Stroke	149 mm	5.87 in	
Displacement	9.3 L	567.5 in <sup>3</sup>	
<ul style="list-style-type: none"> <li>• Meets U.S. EPA Tier 4 Final and EU Stage V emission standards.</li> <li>• Net power advertised is the power available at the flywheel when the engine is equipped with fan, air intake system, exhaust system, and alternator.</li> <li>• Rated speed at 1,900 rpm.</li> </ul>			
DRIVE			
Maximum Travel Speed	4.3 km/h	2.7 mph	
Maximum Drawbar Pull	378 kN	84,978 lbf	
HYDRAULIC SYSTEM			
Main System – Maximum Flow – Implement	581 L/min	153.4 gal/min	
Maximum Pressure – Equipment – Implement	35 000 kPa	5,076 psi	
Maximum System Pressure – Heavy Lift Mode	38 000 kPa	5,511 psi	
Maximum Pressure – Travel	35 000 kPa	5,076 psi	
Maximum Pressure – Swing	28 400 kPa	4,119 psi	
SWING MECHANISM			
Swing Speed	6.1 rpm		
Maximum Swing Torque	163 kN·m	120,222 lbf·ft	
WEIGHTS			
Operating Weight – General Forestry	48 500 kg	106,920 lb	
<ul style="list-style-type: none"> <li>• High Wide undercarriage, Reach boom, R3.9 m (12'10") Reach stick, 700 mm (28") double grouser shoes, 1.64 m<sup>3</sup> (2.14 yd<sup>3</sup>) HD bucket.</li> </ul>			
Operating Weight – Log Loader	49 300 kg	108,690 lb	
<ul style="list-style-type: none"> <li>• High Wide undercarriage, Log Loader boom, 4.73 m (15'6") Under/Under stick with live heel, 700 mm (28") double grouser shoes, no grapple.</li> </ul>			
SERVICE REFILL CAPACITIES			
Fuel Tank Capacity	990 L	262 gal	
Cooling System	20.0 L	5 gal	
Engine Oil (with filter)	32 L	8 gal	
Swing Drive (each)	10.5 L	3 gal	
Final Drive (each)	9.5 L	3 gal	
Hydraulic System (including tank)	383 L	101 gal	
Hydraulic Tank	185 L	49 gal	
Diesel Exhaust Fluid (DEF) Tank	80 L	21 gal	

AIR CONDITIONING SYSTEM				
The air conditioning system on this machine contains the fluorinated greenhouse gas refrigerant R134a (Global Warming Potential = 1430). The system contains 1.00 kg of refrigerant, which has a CO <sub>2</sub> equivalent of 1.430 metric tonnes.				
WORKING RANGES				
<b>General Forestry</b>				
Reach 6.5 m (21'4") boom, Reach 3.9 m (12'10") stick				
Maximum Reach at Ground Level		11 690 mm	38'4"	
<b>Log Loader</b>				
<b>Under/Under</b>				
Log Loader 7.09 m (23'3") boom, under/under 4.73 m (15'6") stick				
Maximum Reach at Ground Level		12 930 mm	42'5"	
<b>Over/Under</b>				
Log Loader 7.09 m (23'3") boom, under/under 4.73 m (15'6") stick				
13 530 mm		44'5"		
<b>Power Clam</b>				
Log Loader 7.09 m (23'3") boom, under/under 4.73 m (15'6") stick				
11 670 mm		38'3"		
DIMENSIONS				
	<b>General Forestry</b>		<b>Log Loader</b>	
<b>Boom</b>	<b>Reach 6.5 m (21'4")</b>		<b>LL 7.09 m (23'3")</b>	
<b>Stick</b>	<b>Reach 3.9 m (12'10")</b>		—	
<b>Stick</b>	—		<b>Under/Under</b> 4.73 m (15'6")	
<b>Stick</b>	—		<b>Over/Under</b> 4.73 m (15'6")	
<b>Stick</b>	—		<b>Power Clam</b> 4.73 m (15'6")	
<b>Shipping Height (cab tilted)</b>	4030 mm	13'3"	3490 mm	11'5"
<b>Handrail Height</b>	3510 mm	11'6"	3510 mm	11'6"
<b>Shipping Length</b>				
GF with attachment	15 430 mm	50'7"	—	
LL Under/Under – no attachment	—		16 930 mm	55'7"
LL Over/Under – no attachment	—		17 370 mm	57'0"
LL Power Clam – no attachment	—		15 530 mm	50'11"
<b>Tail Swing Radius</b>	3790 mm	12'5"	3790 mm	12'5"
<b>Counterweight Clearance</b>	1500 mm	4'11"	1500 mm	4'11"
<b>Ground Clearance</b>	760 mm	2'6"	760 mm	2'6"
<b>Track Length</b>	5490 mm	18'0"	5490 mm	18'0"
<b>Length to Center of Rollers</b>	4450 mm	14'7"	4450 mm	14'7"
<b>Track Gauge</b>	2920 mm	9'7"	2920 mm	9'7"
<b>Transport Width</b>				
700 mm (28") shoes	3650 mm	12'0"	3650 mm	12'0"

# STANDARD & OPTIONAL EQUIPMENT

Standard and optional equipment may vary. Consult your Cat dealer for details.

BOOMS AND STICKS	STANDARD	OPTIONAL
6.5 m (21'4") Reach boom		•
7.09 m (23'3") Log Loader boom		•
3.9 m (12'10") Reach stick		•
4.73 m (15'6") over/under stick		•
4.73 m (15'6") power clam stick		•
CAB	STANDARD	OPTIONAL
ROPS Forestry cab with polycarbonate windows	•	
4-point harness seat belt	•	
Rear entry		•
Side entry		•
559 mm (22") tilting riser		•
1219 mm (48") tilting riser		•
1829 mm (72") tilting riser		•
Heated and cooled seat with air-adjustable suspension	•	
Integrated joysticks	•	
Tilt-up left-side console (side-entry cab only)	•	
High-resolution touchscreen monitor	•	
Bluetooth integrated radio (including USB, aux port and microphone)	•	
12V DC outlets	•	
Keyless push-to-start engine control	•	
Automatic bi-level air conditioner	•	
LED dome and floor lights	•	
Windshield wiper and washer	•	
Behind seat storage	•	
CB radio mounts		•
Retractable sunshade	•	
Cat Stick Steer		•
Auxiliary relay		•
CAT® TECHNOLOGIES	STANDARD	OPTIONAL
Cat Product Link™	•	
Remote Services capability	•	

ELECTRICAL SYSTEM	STANDARD	OPTIONAL
Maintenance-free 1,000 CCA batteries (x4)	•	
Centralized electrical disconnect switch	•	
LED chassis, boom/stick, and cab lights	•	
Premium lighting – General Forestry – six additional lights		•
Premium lighting – Log Loader – 10 additional lights		•
ENGINE	STANDARD	OPTIONAL
Electric fuel priming pump	•	
Cold start package with block heater and ether assist		•
Three selectable modes: Power, Smart, Eco	•	
Automatic engine speed control	•	
Automatic engine idle shutdown	•	
Up to 4500 m (14,764 ft) altitude capability	•	
52° C (126° F) high-ambient cooling capacity	•	
-32° C (-25° F) cold start capability	•	
Hydraulic reverse fan	•	
Two-stage fuel filter system	•	
Double element air filter with integrated pre-cleaner	•	

**Not all features are available in all regions. Please check with your local Cat dealer for specific offering availability in your area.**

For additional information and additional regional offerings, refer to the Technical Specifications brochure available at [www.cat.com](http://www.cat.com) or your Cat dealer.



# STANDARD & OPTIONAL EQUIPMENT

Standard and optional equipment may vary. Consult your Cat dealer for details.

HYDRAULIC SYSTEM	STANDARD	OPTIONAL
Boom and stick regeneration circuits	•	
Boom and stick drift reduction valve	•	
Electronic main control valve	•	
Automatic hydraulic oil warmup	•	
Automatic swing parking brake	•	
High performance hydraulic return filter	•	
Automatic two speed travel	•	
Bio hydraulic oil capability	•	
High torque swing drive	•	
Swing cushion valve	•	
Tool control software	•	
Medium pressure circuit		•
SAFETY AND SECURITY	STANDARD	OPTIONAL
Caterpillar One Key security system	•	
Easy lock cab tilting system		•
Cab riser light		•
Inspection lighting		•
Lockable service doors	•	
Lockable external tool/storage box	•	
Lockable fuel caps and hydraulic tank	•	
Service platforms with anti-skid plate and countersunk bolts	•	
Right-hand handrail and handhold	•	
Signaling/warning horn	•	
Travel alarm	•	
Swing alarm		•
Ground-level secondary engine shutoff switch	•	
Rearview camera	•	
Right-hand sideview camera		•
SERVICE AND MAINTENANCE	STANDARD	OPTIONAL
Integrated vehicle health management system		•
Side-entry service platform	•	
Left- and right-side fuel fill locations	•	
Grouped location for engine oil and fuel filters	•	
S-O-S sampling ports	•	

UNDERCARRIAGE AND STRUCTURES	STANDARD	OPTIONAL
High Wide undercarriage	•	
Grease lubricated track with positive pin retention	•	
Catwalks	•	
Tie down points	•	
Counterweight fuel tank	•	
850 mm (33") triple grouser shoes		•
700 mm (28") double and single grouser shoes		•
Heavy-duty track rollers	•	
Heavy-duty travel motor guards	•	
Heavy-duty bottom guards	•	
Track guiding guards	•	
High drawbar final drives	•	
Heavy-duty recoil springs	•	
Heavy-duty hydraulic swivel	•	
Heavy-duty hydraulic swivel guard	•	

**Not all features are available in all regions. Please check with your local Cat dealer for specific offering availability in your area.**

For additional information and additional regional offerings, refer to the Technical Specifications brochure available at [www.cat.com](http://www.cat.com) or your Cat dealer.

For more complete information on Cat products, dealer services and industry solutions, visit us on the web at [www.cat.com](http://www.cat.com)

© 2022 Caterpillar. All Rights Reserved.

Materials and specifications are subject to change without notice. Featured machines in photos may include additional equipment. See your Cat dealer for available options.

CAT, CATERPILLAR, LET'S DO THE WORK, their respective logos, "Caterpillar Corporate Yellow," the "Power Edge" and Cat "Modern Hex" trade dress as well as corporate and product identity used herein, are trademarks of Caterpillar and may not be used without permission. VisionLink is a trademark of Caterpillar Inc., registered in the United States and in other countries.

[www.cat.com](http://www.cat.com) [www.caterpillar.com](http://www.caterpillar.com)

AEXQ3343-01 (11-2022)  
Replaces AEXQ3343  
Build Number: 07B  
(Aus-NZ, N Am)

