

# 319

## HYDRAULIC EXCAVATOR



**Net Power – ISO 9249**

99 kW (133 hp)

**Operating Weight**

20 000 kg (41,100 lb)

**Maximum Digging Depth**

6550 mm (21.5 ft)





# CAT<sup>®</sup> 319

## HYDRAULIC EXCAVATOR

The Cat<sup>®</sup> 319 hydraulic excavator offers powerful performance, stability, and productivity for construction, utility work, and road maintenance jobs. Operate with confidence in tight spaces with a compact design, while Cat technologies help deliver precision and safety on the jobsite.



### UNMATCHED VERSATILITY

A Cat C3.6 engine, powerful hydraulics, and customizable options in a compact radius design give you the power to move material with speed and precision in confined spaces.

### HIGH PERFORMANCE

Optimal productivity with standard Cat technology and heavy lift feature to help boost lifting capacity for safe, confident handling of heavy loads.

### JOBSITE SAFETY

The optional 360° camera helps maximize visibility, while a wide undercarriage and multiple track shoe options help ensure smooth operation across varying conditions.

# HIGH PERFORMANCE AND PRODUCTIVITY



- Work confidently in space-restricted areas. Dig, swing, and dump within a tight working space.
- The wide undercarriage is designed for optimum stability, helping keep you secure and in control especially on rough or uneven terrain.
- The advanced hydraulic system helps provide the optimum balance of power and efficiency while giving you the control you need for precise digging requirements.
- The heavy lift feature boosts lifting capacity by up to 7% to help you handle heavy materials safely and efficiently.\*
- Match your machine to the job with power modes. Let Smart mode automatically match engine and hydraulic power to working conditions. Power mode constantly helps provide maximum productivity, and Eco mode helps minimize fuel consumption in less-demanding applications.
- Get high production in demanding applications, easily penetrate into piles, and fast cycle times with help from Cat Advansys™ bucket tips. Quickly change tips with a simple lug wrench instead of a hammer or special tool, helping improve safety and uptime.
- Auxiliary hydraulic options give you the versatility to use a wide range of Cat attachments.
- The Cat C3.6 engine meets U.S. EPA Tier 4 Final and EU Stage V emission standards.
- Don't let the temperature stop you from working. The excavator has an optional cold start capability down to -18° C (-0° F) or -25° C (-13° F).

\*Compared to 317 (07H). Estimated lifting improvement based on lift chart data. Not all features are available in all regions. Please check with your Cat dealer for specific offering availability in your area.



# INTEGRATED CAT TECHNOLOGY

**GETS JOBS DONE FASTER  
WITH LESS REWORK**

Onboard Cat technology gives you the edge. Operators of all experience levels will dig, load, and grade with more confidence, speed, and accuracy. The result? Better productivity and lower costs.

## CAT GRADE WITH ASSIST

Cat Grade with Assist adds semi-autonomous digging to help boost operator efficiency. It automates boom, stick, and bucket movements to deliver more accurate cuts with less effort. The operator simply sets the depth and slope in the monitor and activates single-lever digging. It enables operators of all skill levels to work more confidently, efficiently, and productively in most digging, sloping, leveling, fine grading, trenching, and loading jobs.

## CAT GRADE WITH 2D

Cat Grade with 2D helps excavator operators work more efficiently in a wide variety of applications.\* Delivering real-time guidance for accurate vertical and horizontal control, Grade with 2D helps to ensure that cuts and fills are made to exact specifications – without under or overcutting.

## CAT PAYLOAD

Cat Payload provides operators with on-the-go weighing to help them hit load targets and avoid overloading, underloading, or misloading materials. Advanced Payload is a system upgrade that offers expanded features and capabilities, including custom tags, daily totals, and electronic ticketing. Combine Payload with VisionLink™\*\* to analyze jobsites and individual assets for remote management of production targets and key metrics.

## CAT GRADE 3D READY

The Cat Grade 3D Ready option includes all the hardware required for the Grade with 3D system, installed and tested from the factory. This option provides an easier upgrade path for customers who want to add Grade with 3D after their initial purchase. To activate, contact your Cat dealer to purchase the required 3D software licenses. Licenses can be installed remotely or manually loaded onto the machine.

\*Compared with traditional grading methods.

\*\*Cat Payload for excavators is not legal for trade. VisionLink subscription required. Availability may vary by region. Consult your Cat dealer for more details.



# CAT EQUIPMENT MANAGEMENT TECHNOLOGY TAKES THE GUESSWORK OUT OF MANAGING YOUR EQUIPMENT

Cat equipment management telematics technology helps take the complexity out of managing your jobsites by gathering data generated by your equipment, materials, and people and serving it up to you in customizable formats.

## VISIONLINK™

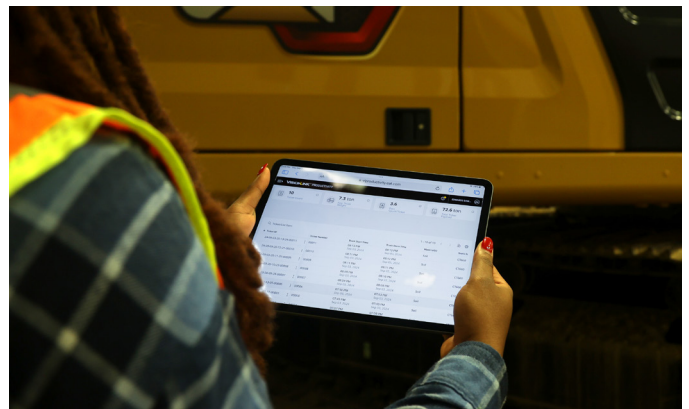
VisionLink takes the guesswork out of managing your entire fleet – regardless of size or equipment manufacturer.\* Review equipment data from your desktop or mobile device to maximize uptime and optimize assets. With interactive dashboards, VisionLink makes it easier for operations of all sizes to make informed decisions that lower costs, simplify maintenance, and improve safety and security on your jobsite. With different subscription-level options, your Cat dealer can help you determine what you need to connect your fleet and manage your business.



## REMOTE SERVICES\*\*

**Remote Troubleshoot** allows your Cat dealer to perform diagnostic testing on your connected machine remotely, pinpointing potential issues while the machine is in operation. Remote troubleshooting helps to ensure the technician arrives with the correct parts and tools the first time, eliminating additional trips to save you time and money.

**Remote Flash** allows you to update onboard software without a technician being present, allowing you to initiate software updates when convenient, increasing your overall operating efficiency.



\*Data field availability can vary by equipment manufacturer. VisionLink subscription required for advanced data features. Availability may vary by region, consult your Cat dealer for more details.

\*\*Must be within cell range coverage.



# COMPACT RADIUS

THE POWER YOU NEED  
IN A 19 MT MACHINE

The 319's compact radius design makes it the right machine for working in space-restricted areas. Work confidently in road construction jobs with lane closures and next to buildings and other structures.

## WORK WITH CONFIDENCE AND POWER

Unlike a standard radius machine, the 319's boom cylinders are positioned in a way that maximizes lifting performance and short turning radius.





# COMFORTABLE CAB DESIGN

## MAKES HARD WORK EASY

- Deluxe and Premium cab options vary by region.
- The Deluxe seat is heated and air adjustable. The Premium seat is heated and cooled and adjusts automatically.
- Get in and out of the cab easily using the tip-up left console available in the Deluxe and Premium cabs.
- Advanced viscous mounts help you feel comfortable in the cab while you work with reduced cab vibrations.
- Control the excavator comfortably with easy-to-reach controls all located in front of you.
- Stow your gear with plenty of in-cab storage beneath and behind the seat, overhead, and in the consoles. A cup holder, document holder, and coat hook are also provided.
- Use the standard radio's USB ports and Bluetooth® technology to connect personal devices and make hands-free calls.







## TOUCHSCREEN MONITOR

Most machine settings can be controlled through the high-resolution 254 mm (10 in) touchscreen monitor. It offers 42 languages and is easy to reach from the seat – no twisting or turning.



## SMART SETTINGS

The Smart mode, one of three power mode settings, automatically adjusts engine and hydraulic power for the highest fuel efficiency – less power for tasks such as swinging and more power for digging. Operators can set and store their power mode preference using Operator ID. Owners can lock in the mode they want their operators to use to help manage fuel consumption.



## CUSTOMIZABLE JOYSTICKS

Personalize joystick pattern and response through the monitor; use operator ID to save and restore those settings at login. Make moving the excavator much easier with Cat Stick Steer. Simply push a button and use one hand to travel and turn instead of both hands or feet on levers or pedals. Adding an auxiliary relay allows you to power on or turn off a CB radio, beacon light, and even a dust suppression watering system without taking your hands off the joysticks.



## KEYLESS PUSH START

The 319 uses a keyless push-button engine start. This adds security for the machine by using operator ID codes to limit and track machine access. Codes can be entered manually or via an optional Bluetooth key fob.





## LOW MAINTENANCE COSTS

- Quickly check and service your machine with daily maintenance points accessible from ground level.
- Check the engine oil level quickly and safely from the ground. Fill and check engine oil on top of the machine with a conveniently located second dipstick.
- Track your machine's filter life and maintenance intervals on the in-cab monitor.
- Long life filters for fuel, hydraulic oil, and air help save on maintenance costs.
- The hydraulic oil filter helps provide high filtration performance, anti-drain valves to help keep oil clean when the filter is replaced, and long life with a 3,000-hour replacement interval.
- High-efficiency cooling fans run only when needed; you can program intervals so they automatically reverse to help keep cores clean without interrupting your work.
- Scheduled Oil Sampling (S•O•S<sup>SM</sup>) ports are located at ground level, helping simplify maintenance and allowing for quick, easy extraction of fluid samples for analysis.
- Boost productivity with proactive service reminders. The integrated vehicle health management system alerts the operator with step-by-step service guidance along with parts needed so you don't experience any unnecessary downtime.





# SAFETY FEATURES

LOOK OUT FOR YOUR PEOPLE AND EQUIPMENT



## CAT COMMAND REMOTE CONTROL

Cat Command remote control enables equipment operators to work safely outside the machine when working in hazardous environments. Command offers the choice of handheld consoles\* (line-of-sight) or long-distance virtual stations (non-line-of-sight). Deep integration with machine systems enables efficiency and productivity by maintaining the use of in-cab technology\* features (Grade, Payload, Assist, etc.).

## GROUND-LEVEL DAILY MAINTENANCE

Daily maintenance checks can be performed from ground level to help make maintenance fast, easy, and safe. Checkpoints include the engine oil dipstick, fuel water separator, fuel tank water, and sediment drains.

## CAT DETECT – PEOPLE DETECTION KIT

People working near heavy equipment on a jobsite risk being struck by a machine. Although machines are designed to provide maximum operator visibility, constantly monitoring their surroundings can be difficult. Cat Detect – People Detection for excavators is an intelligent vision camera system that alerts operators when someone enters the machine's hazard zone.\*\*

## CAT 2D E-FENCE

Cat 2D E-Fence restricts the front linkage from moving beyond operator-defined preset boundaries for the ceiling, floor, wall, swing, and cab. This not only ensures the safety of personnel but also saves on costly repairs, equipment downtime, and potential jobsite fines.

\*Operator assist features for the Command Console are not available in Europe.

\*\*The system may not detect personnel in certain circumstances, such as fast swing speeds, people lying down or crouching, or when cameras are impaired by low light conditions (dusk, dawn, overcast), inclement weather (snow, rain, fog), or other similar conditions. For limitations of use, refer to the operation and maintenance manual.

# SUSTAINABILITY

---

- The Cat C3.6 engine meets U.S. EPA Tier 4 Final and EU Stage V emission standards.
- Cat Grade technologies combine advanced guidance with optional automated machine control helping you reach grading targets while helping to reduce fuel burn and greenhouse gas emissions by improving efficiency, jobsite productivity, and accuracy.
- Cat Grade with Assist helps operators stay on grade simply and effortlessly with semi-autonomous digging. It automates boom, stick, and bucket movements to deliver more accurate cuts with less effort.
- Auto Engine Speed Control reduces unnecessary fuel burn and greenhouse gas emissions by allowing the engine to automatically go into idle mode when the machine is not working.
- Cat Payload for excavators provides operators with on-the-go weighing to help them hit load targets and avoid overloading, underloading, or misloading materials.
- Cat 2D E-Fence restricts the front linkage from moving beyond operator-defined preset boundaries for the ceiling, floor, wall, swing, and cab. This not only ensures the safety of personnel but also saves on costly repairs, equipment downtime, and potential jobsite fines.
- Extended maintenance intervals not only help reduce downtime but decrease the amount of fluid and filters that are replaced over the life of the machine.
- VisionLink displays the CO<sub>2</sub> emissions for monitored assets, calculated by fuel type for the Runtime Fuel Burned each day in a selected date range.
- Remote Troubleshoot is a mobile application that allows your Cat dealer to perform diagnostic testing on your connected machine remotely to help ensure that issues are resolved quickly and with less downtime.
- Remote Flash is a mobile application that allows you to update onboard software without a technician being present, allowing you to initiate software updates when convenient, increasing your overall operating efficiency.





# MORE THAN MACHINES

BUILT AROUND YOUR SUCCESS

When you buy Cat equipment, you get so much more than the machine. You also get the support of a world-class dealer network, backed by a range of flexible solutions, technology, tools, and more.



## CUSTOMER VALUE AGREEMENTS

A Customer Value Agreement (CVA) from your Cat dealer helps you do more and worry less. A CVA simplifies machine ownership and maintenance, adds the security of expert dealer support, and gives you the peace of mind from effective equipment health management.

## GENUINE CAT PARTS

Genuine Cat parts deliver the highest level of reliability and productivity. Order direct from your Cat dealer or shop online at [parts.cat.com](https://parts.cat.com).

## REPAIR OPTIONS

A broad range of repair options gives you choices that work with your needs, budget, and timeline. Every repair is performed by expert Cat technicians. You'll receive smart repair advice, a timely, accurate quote, and service that gets your machine back into action quickly.

## FINANCIAL SERVICES

Count on Cat Financial to provide the best finance and extended protection solutions for your business. For more than 30 years, we have helped our customers succeed through financial service excellence.



DOZERS



SKID STEERS



MATERIAL HANDLERS



EXCAVATORS



WHEEL LOADERS



TRACK LOADERS



# INCREASE YOUR PRODUCTIVITY AND PROFIT WITH CAT ATTACHMENTS

You can easily expand the performance of your machine by utilizing any of the variety of Cat attachments. Each Cat attachment is designed to fit the weight and horsepower of Cat excavators for improved performance, safety, and stability.

## BUCKETS



## COUPLERS



## GRAPPLES



## TILTROTATOR



## MULCHERS



## HYDRAULIC HAMMERS



## PREVENT HAMMER WEAR AND TEAR

Protect your hammer tool from overheating and rapid wear. Auto hammer stop warns you after 15 seconds of continuous firing and then automatically shuts it off after 30 seconds – all to extend the tool's service life.

## ATTACHMENT TRACKING MADE EASY

The Cat PL161 attachment locator is a Bluetooth device designed to let users know where their attachments are across all worksites, reduce the number of lost attachments, and plan for attachment maintenance and replacement.

Save more time and energy with the available work tool recognition feature.\* A simple shake of the attached tool confirms its identity and ensures all the attachment settings (pressure, flow, and dimensions) are correct so you can work quickly and efficiently.

The PL161 integrates easily into VisionLink for full fleet management of machines and attachments from one smartphone or tablet dashboard to view location and tracking details.

## DO HARD-TO-REACH WORK

With 360° rotation and 40° side-to-side tilting action, a Cat tiltrotator will help you get complex work done faster. This system upgrade from the factory allows the tool to work with Cat 2D Grade, Assist, Payload, and E-Fence.

It includes factory-fit joysticks, but uses the standard cab monitor to display the tool and engage its SecureLock™ so you don't need to spend money on an extra monitor. It also works seamlessly with other brands with no additional hardware required. All you have to do is simply select "Third Party Tiltrotator System Installation" in the monitor, do the calibration, and get to work.

\*Work tool recognition is available on select excavator models. Automated attachment settings must be enabled within each machine configuration. Consult your Cat dealer for details.



# TECHNICAL SPECIFICATIONS

ENGINE		
Engine Model	Cat® C3.6	
Net Power – ISO 9249	99 kW	133 hp
Net Power – ISO 9249 (DIN)	134 hp (metric)	
Engine Power – ISO 14396	100 kW	134 hp
Engine Power – ISO 14396 (DIN)	136 hp (metric)	
Bore	98 mm	4 in
Stroke	120 mm	5 in
Displacement	3.6 L	220 in³
Biodiesel Capability	up to B20 <sup>(1)</sup>	
<ul style="list-style-type: none"><li>• Meets U.S. EPA Tier 4 Final and EU Stage V emission standards.</li><li>• Net power advertised is the power available at the flywheel when the engine is equipped with fan, air intake system, exhaust system and alternator with engine speed at 2,200 rpm. Advertised power is tested per the specified standard in effect at the time of manufacture.</li></ul>		
<sup>(1)</sup> Cat diesel engines are required to use ULSD (ultra-low sulfur diesel fuel with 15 ppm of sulfur or less) and are compatible* with ULSD blended with the following lower-carbon intensity fuels** up to: 20% biodiesel FAME (fatty acid methyl ester)*** or 100% renewable diesel, HVO (hydrotreated vegetable oil) and GTL (gas-to-liquid) fuels. Refer to guidelines for successful application. Please consult your Cat dealer or “Caterpillar Machine Fluids Recommendations” (SEBU6250) for details.		
*While Caterpillar engines are compatible with these alternative fuels, some regions may not allow their use.		
**Tailpipe greenhouse gas emissions from lower-carbon intensity fuels are essentially the same as traditional fuels.		
***Engines with no aftertreatment devices are compatible with higher blends, up to 100% biodiesel (for use of blends higher than 20% biodiesel, consult your Cat dealer).		
HYDRAULIC SYSTEM		
Main System – Maximum Flow – Implement	296 L/min (× 1 pumps)	78 gal/min (× 1 pumps)
Maximum Pressure – Equipment – Implement	35 000 kPa	5,076 psi
Maximum Pressure – Travel	35 000 kPa	5,076 psi
Maximum Pressure – Swing	26 100 kPa	3,785 psi
SWING MECHANISM		
Swing Speed*	9.2 rpm	
Maximum Swing Torque (Dynamic)	49 kN·m	36,210 lbf-ft
Maximum Swing Torque (Static)	61 kN·m	45,140 lbf-ft
*For CE-marked machine default value may be set lower.		
OPERATING WEIGHTS		
North America	20 000 kg	44,100 lb
Long undercarriage, 5.1 m (16'9") Reach Boom, 3.1 m (10'2") Reach Stick, General Duty (GD) 1.0 m³ (1.31 yd³) bucket, and 700 mm (28") triple grouser track shoes.		
Europe	19 700 kg	43,400 lb
Long undercarriage, 5.1 m (16'9") Reach Boom, 3.1 m (10'2") Reach Stick, General Duty (GD) 1.0 m³ (1.31 yd³) bucket, and 600 mm (24") triple grouser track shoes.		

SERVICE REFILL CAPACITIES		
Fuel Tank	229 L	60.5 gal
Cooling System	19 L	5.0 gal
Engine Oil (with filter)	11 L	2.9 gal
Final Drive (each)	6 L	1.6 gal
Hydraulic System (including tank)	83 L	21.9 gal
Hydraulic Tank	76 L	20.1 gal
Diesel Exhaust Fluid (DEF) Tank	21 L	5.5 gal
DIMENSIONS		
<b>Boom</b>	<b>Reach 5.1 m (16'9")</b>	
<b>Stick</b>	<b>Reach 3.1 m (10'2")</b>	
<b>Bucket</b>	<b>GD 1.0 m³ (1.31 yd³)</b>	
Shipping Height (top of cab)	2940 mm	9'8"
Handrail Height	2990 mm	9'10"
Shipping Length	8120 mm	26'8"
Shipping Length (with blade)	8660 mm	28'5"
Tail Swing Radius	1750 mm	5'9"
Counterweight Clearance	1016 mm	3'4"
Ground Clearance	463 mm	1'6"
Track Length	4070 mm	13'4"
Length to Center of Rollers	3265 mm	10'9"
Track Gauge	2200 mm	7'3"
Transport Width – 700 mm (28") shoes	2900 mm	9'6"
WORKING RANGES AND FORCES		
<b>Boom</b>	<b>Reach 5.1 m (16'9")</b>	
<b>Stick</b>	<b>Reach 3.1 m (10'2")</b>	
<b>Bucket</b>	<b>GD 1.0 m³ (1.31 yd³)</b>	
Maximum Digging Depth	6550 mm	21'6"
Maximum Reach at Ground Level	9190 mm	30'2"
Maximum Cutting Height	9050 mm	29'8"
Maximum Loading Height	6430 mm	21'1"
Minimum Loading Height	1850 mm	6'1"
Maximum Depth Cut for 2440 mm (8 ft) Level Bottom	6330 mm	20'9"
Maximum Vertical Wall Digging Depth	5210 mm	17'1"
Minimum Working Equipment Radius	2930 mm	9'7"
Bucket Digging Force - ISO	123 kN	27,650 lbf
Stick Digging Force - ISO	71 kN	15,960 lbf
AIR CONDITIONING SYSTEM		
The air conditioning system on this machine contains the fluorinated greenhouse gas refrigerant R134a or R1234yf. See the label or instruction manual for identification of the gas. If equipped with R134a (Global Warming Potential = 1430), the system contains 0.8 kg (1.8 lb) of refrigerant which has a CO <sub>2</sub> equivalent of 1.144 metric tonnes (1.261 tons). If equipped with R1234yf (Global Warming Potential = 0.5), the system contains 0.7 kg (1.5 lb) of refrigerant which has a CO <sub>2</sub> equivalent of 0.001 metric tonnes (0.001 tons).		

# STANDARD AND OPTIONAL EQUIPMENT

Standard and optional equipment may vary. Consult your Cat® dealer for details.

BOOMS AND STICKS	STANDARD	OPTIONAL
5.1 m (16'9") Reach Boom		•
2.64 m (8'8") stub + 2.6 (8'6") fore Variable Angle Boom		•
2.25 m (7'3") Reach stick (VA Boom only)		•
2.6 m (8'6") Reach stick		•
2.9 m (9'6") Reach stick		•
3.1 m (10'2") Reach stick		•
2.9 m (9'6") Thumb Ready stick (N Am only)		•
CAB	STANDARD	OPTIONAL
Rollover Protective Structure (ROPS)	•	
Operator Protective Guards (OPG)		•
Air suspension heated seat, 254 mm (10") touchscreen monitor	•	
Auxiliary relay		•
CAT® TECHNOLOGY	STANDARD	OPTIONAL
VisionLink™	• <sup>1</sup>	
Remote Flash	•	
Remote Troubleshoot	•	
Operator Coaching		• <sup>2</sup>
Cat Grade with 2D	•	
Cat Grade with 2D with Attachment Ready Option (ARO)		•
Cat Grade with 3D (single or dual Global Navigation Satellite System [GNSS])		•
Cat Grade 3D Ready		•
Cat Assist	•	
Cat Payload	•	
Cat Advanced Payload		•
ELECTRICAL SYSTEM	STANDARD	OPTIONAL
Maintenance free battery	•	
Programmable time-delay LED working lights	•	
LED chassis light, left-side/right-side boom lights, cab lights	•	
360° lighting		•
ENGINE	STANDARD	OPTIONAL
Cat C3.6 single turbo diesel engine	•	
Three selectable modes: Power, Smart, Eco	•	
One-touch low idle with automatic engine speed control	•	
Automatic engine idle shutdown	•	
Cold start capability down to -18°C (-0°F)		•
Cold start capability down to -25°C (-13°F)		•
Single fuel filtration system with water separator and indicator	•	
Sealed double element air filter with integrated pre-cleaner	•	
Electric fuel priming pump	•	
Electric cooling fans	•	

HYDRAULIC SYSTEM	STANDARD	OPTIONAL
Electronic main control valve	•	
Single type electronic main pump	•	
Boom and stick regeneration circuits	•	
Boom and stick drift reduction valve	•	
Automatic hydraulic oil warm up	•	
Automatic two-speed travel	•	
Auto heavy lift	•	
SAFETY AND SECURITY	STANDARD	OPTIONAL
Cat Detect – People Detection		•
Rear and right-side-view cameras	•	
360° visibility		•
Ground-level accessible secondary engine shutoff switch in cab	•	
Service platform with anti-skid plate and countersunk bolts	•	
Signaling/warning horn	•	
Swing alarm		•
Hydraulic lock out lever	•	
Inspection lighting		•
2D E-Fence	•	
SERVICE AND MAINTENANCE	STANDARD	OPTIONAL
Grouped engine oil and fuel filters	•	
Ground-level engine oil dipstick	•	
Scheduled Oil Sampling (S-O-S <sup>SM</sup> ) ports	•	
Integrated vehicle health management system	•	
UNDERCARRIAGE AND STRUCTURES	STANDARD	OPTIONAL
500 mm (20") triple grouser track shoes (Europe only)		•
600 mm (24") triple grouser track shoes		•
600 mm (24") triple grouser track shoes with rubber pad		•
700 mm (28") triple grouser track shoes with additional steps		•
900 mm (35") triple grouser track shoes (Europe only)		•
Grease lubricated track link	•	
4.65 mt (10,200 lb) counterweight	•	
Tie-down points	•	
2800 mm (9'2") blade		•
2900 mm (9'6") blade		•

<sup>1</sup> Provides core telematics data to manage health, maintenance insights, and condition monitoring. Other plans available for more comprehensive data reporting. Consult your Cat dealer for details.

<sup>2</sup> VisionLink subscription required for back office reporting. Consult your Cat dealer for details.



For more complete information on Cat products, dealer services and industry solutions, visit us on the web at [www.cat.com](http://www.cat.com).

Materials and specifications are subject to change without notice. Featured machines in photos may include additional equipment. See your Cat dealer for available options.

© 2026 Caterpillar. All Rights Reserved. CAT, CATERPILLAR, LET'S DO THE WORK, VisionLink, their respective logos, "Caterpillar Corporate Yellow", the "Power Edge" and Cat "Modern Hex" trade dress as well as corporate and product identity used herein, are trademarks of Caterpillar and may not be used without permission.  
[www.cat.com](http://www.cat.com) [www.caterpillar.com](http://www.caterpillar.com)

AEXQ4572-00 (01-2026)  
Build Number: 07H  
(Europe, N Am)

