



# Cat<sup>®</sup> CCS9

## SMOOTH DRUM VIBRATORY COMBINATION COMPACTOR

### FEATURES:

The CCS9 is a 9 metric ton vibratory combination compactor with a 2130 mm (84") drum width. It delivers excellent mat densities and has the ability to press longitudinal joints with its rear wheels. The CCS9 offers good job site visibility, comfort, and fuel efficiency with standard Eco-mode. It's also equipped with the industry-leading water spray system:

- **Exceptional Visibility and Control** with smooth steering, touchpad machine functions and LCD display enable comfortable and efficient operation to keep operators engaged.
- **Smooth and Quiet Powertrain** with C4.4 engine that meets U.S. EPA Tier 4 Final and EU Stage IV emissions standards. Eco-mode, automatic engine speed control, and the auto-vibe features help provide reliable control.
- **Achieve target densities quickly** with the 5-amplitude single frequency vibratory system is well equipped to match thick or thin lifts as well as various paving speeds with simple thin/thick lift operation.
- **Compact when optimal compaction temperatures exist.** Optional bumper mounted infrared temperature sensors keep the operator informed of mat temperatures for higher performance and efficiency.
- **Industry-Leading Water Spray System** features a single fill point, dual water pumps, dual spray bars, triple filtration, intermittent operation and high capacity for optimal performance and longer fill intervals.
- **Best Lifetime Value** with Eco-mode operation that conserves fuel, while oil-bath lubrication and 3 yr/3000 hr vibratory drum service interval extends operation and minimizes life-time operating costs.

## Specifications

### Engine - Power Train

Engine Model	Cat <sup>®</sup> C4.4	
Global Emissions	US EPA Tier 4 Final EU Stage IV	
Gross Power ISO 14396	98 kW	131 hp
Displacement	4.4 L	268.5 in <sup>3</sup>
Stroke	127 mm	5 in
Bore	105 mm	4.1 in
Max. Travel Speed (Forward or Reverse)	10.4 km/h	6.4 mph

### Weights

Operating Weight w/ ROPS/FOPS Canopy	9000 kg	19,842 lb
Weight at Drum	4995 kg	11,012 lb
Operating Weight w/ ROPS/FOPS Cab	9335 kg	20,580 lb
Weight at Drum	5241 kg	11,554 lb

### Service Refill Capacities

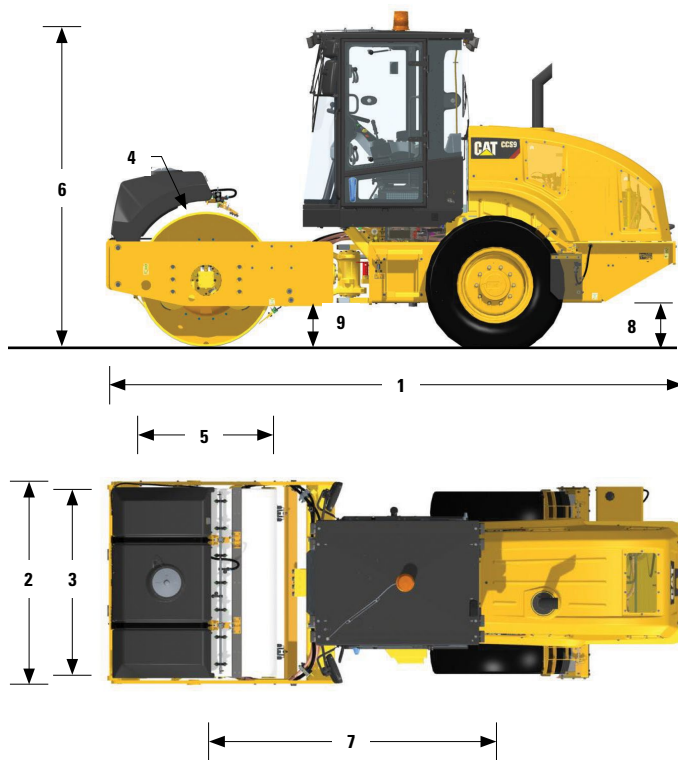
Fuel Tank, total capacity	150 L	40 gal
Diesel Exhaust Fluid (DEF) refill	18.9 L	5 gal
Cooling System	15.8 L	4.2 gal
Engine Oil w/ Filter	9 L	2.4 gal
Eccentric Weight Housing	13 L	2.9 gal
Axle and Final Drives	14.6 L	3.9 gal
Hydraulic Tank (service refill)	26 L	6.9 gal
Water Spray Tank	600 L	132 gal
Wheel Spray Tank	18L	4 gal

### Vibratory System Specifications

Frequency	42 Hz	2520 vpm
5-Amplitude System		
High	1.03 mm	0.040 in
Medium High	0.95 mm	0.037 in
Medium	0.83 mm	0.032 in
Medium Low	0.65 mm	0.026 in
Low	0.41 mm	0.014 in
Centrifugal Force		
High	138 kN	31,023 lb
Medium High	128 kN	28,775 lb
Medium	112 kN	25,179 lb
Medium Low	87.7 kN	19,716 lb
Low	55.2 kN	12,409 lb
Static Linear Load		
w/ ROPS/FOPS	23.5 kg/cm	132 lbs/in
w/ ROPS/FOPS Cab	24.6 kg/cm	138 lbs/in



# CCS9 Vibratory Combination Compactor



## Dimensions

1 Overall Length	5.71 m	18.7 ft
2 Overall Width	2.3 m	7.5 ft
3 Drum Width	2130 mm	84 in
4 Drum Shell Thickness	20 mm	1 in
5 Drum Diameter	1300 mm	51 in
6 Overall Height		
-Cab	3.04 m	10.0 ft
-ROPS/FOPS	3.01 m	9.9 ft
7 Wheelbase	2.9 m	9.5 ft
8 Ground Clearance	392 mm	15.4 in
9 Curb Clearance	425 mm	14.5 in
Inside Turning Radius	3.68 m	12.07 ft
Hitch Articulation Angle	34°	
Hitch Oscillation Angle	15°	

## STANDARD EQUIPMENT *Varies by market- contact your Dealer for specifics.*

### ELECTRICAL

- 24-volt Electrical System
- 120-ampere Alternator
- 750 Cold-cranking Amps Battery Capacity

### OPERATOR ENVIRONMENT

- 12-volt Power Outlet
- Adjustable Seat with Integrated Console and LCD Display
- Adjustable Tilting Steering Column with Integrated Cup Holders
- Floor Mat
- Horn, Backup Alarm
- Interior Rear View Mirror
- Lockable Vandalism Guard for LCD Display
- Multifunction LCD Display with gauges and/or audible warning alarm for: *Hydraulic oil temperature, Engine oil pressure, Engine coolant temperature, Alternator charge, Fuel level, Service hour meter, Engine RPM, Ground speed, Vibe frequency, Fuel rate, Air filter constriction, and Engine load*
- Platform Handrails/Guardrails *ROPS/FOPS models only*
- ROPS/FOPS or ROPS/FOPS Cab *-Depends on market*
- Seat Belt

### POWER TRAIN

- Air Cleaner, Dual Element
- Cat C4.4 Engine
- Dual Braking System
- Dual Propel Pumps; One for Drum Drive, One for Rear Axle
- Fuel Filter, Water Separator, Electronic Priming Pump, Water Indicator
- Three-speed Throttle Switch, Eco-mode,
- Tilting Hydraulic Oil/Fuel Cooler
- Two-speed Hydrostatic Transmission

### VIBRATORY SYSTEM

- Auto-vibe Function
- Five Amplitude, Single Frequency
- Pod-Style Eccentric Weight Housing
- Smooth Drum

### OTHER

- Cat ToughGuard™ Hose
- Hydraulic Oil Level Sight Gauge
- Product Link™
- Radiator Coolant Level Sight Gauge
- S-O-S™ Sampling Valves, Engine Oil and Hydraulic Oil

## OPTIONAL EQUIPMENT

- Beacon, Rotating
- Bio-oil Factory Fill
- Cab Internal Roll-down Sun Screen
- Infra-red Temperature Gauge
- Rear View Mirrors (Additional)
- ROPS/FOPS Cab with Climate Control
- Sun Visor
- Water Distribution Mats (Cocoa, Rubber)

For more complete information on Cat products, dealer services, and industry solutions, visit us on the web at [www.cat.com](http://www.cat.com)

QEHQ2026-02 (6-17)

© 2017 Caterpillar  
All Rights Reserved

Weights and dimensions listed are approximate. Materials and specifications are subject to change without notice. Featured machines in photos may include additional equipment. See your Cat dealer for available options.

CAT, CATERPILLAR, BUILT FOR IT, their respective logos, "Caterpillar Yellow" and the "Power Edge" trade dress, as well as corporate and product identity used herein, are trademarks of Caterpillar and may not be used without permission.

