



Cat[®] TH514D

TELEHANDLER

FEATURES:

- **Simple Maintenance** – Due to the engine layout parallel to the machine frame, Cat[®] Telehandlers feature class leading access to the engine, filters and service fluids, making servicing simple and quick from ground level. Our excellent dealer and parts network ensures rapid availability around the clock.
- **Handle Tough Terrain** – High ground clearance and limited slip differential locks ensure that the TH514D can handle even the most difficult environments. Dual axle braking also provides the security you need when towing around sites and our long wheelbase ensures load stability on uneven ground.
- **Powerful Hydraulics** – A variable flow axial pump matched to a high performance flow sharing valve allows smooth multi-function boom performance. The load sensing system means excellent fuel economy, as the pump only works when required.
- **Cab** – A well laid out cab with a multi function joystick gives the operator a comfortable working environment. The unique “Operator Preferences” feature allows the machine to be tuned to suit individual operators. Options include a heated air suspension seat, large display screen with pre-loaded load charts, rear view camera, reversing sensors and air conditioning.

Specifications

Engine

Model*	Cat C3.4B	
Gross power	75 kW	100 hp/bhp
Max torque	420 N-m	310 lbf-ft
Bore	99 mm	3.8 in
Stroke	110 mm	4.3 in
Displacement	3.4 L	207 in ³

*Meets U.S. EPA Tier 4 Final/EU Stage IV/Japan 2014 (Tier 4 Final) and Korea Tier 4 Final emission standards.

Weights

Operating Weight with Carriage and Forks*	12 034 kg	26,530 lb
---	-----------	-----------

*Represents machine configuration of 75 kW (100 hp/bhp) engine on standard 15.5/80-24 16 ply tires.

Operating Specifications

Rated Load Capacity	4990 kg	11,000 lb
Maximum Lift Height	13.88 m	45.6 ft
Capacity at Maximum Lift Height	1996 kg	4,400 lb
Capacity at Maximum Lift Height (stabilizers down)	3175 kg	7,000 lb
Maximum Forward Reach	9.3 m	30.5 ft
Capacity at Maximum Forward Reach	272 kg	600 lb
Capacity at Maximum Forward Reach (stabilizers down)	1701 kg	3,750 lb
Outside Turning Radius over Tires	3.9 m	12.9 ft

Service Refill Capacities

Fuel Tank	148 L	40 gal
Diesel Exhaust Fluid	20.3 L	5.4 gal
Hydraulic Tank	160 L	42 gal

Brakes

Service Brakes	Boost assisted oil immersed multi disc on both axles
Parking Brake	Mechanically actuated on front axle service brakes

Transmission

Type	Cat PG124 6 speed power shift	
Forward		
1	5.5 km/h	3.4 mph
2	10.6 km/h	6.5 mph
3	25.2 km/h	15.6 mph
4	30.9 km/h	19.2 mph
Reverse		
1	5.5 km/h	3.4 mph
2	10.6 km/h	6.5 mph
3	25.2 km/h	15.6 mph

Electrical

Battery	1 × 12V 1,000 CCA Battery
Alternator Output	12V/150A



TH514D Telehandler

Hydraulic System

System Type	Load Sensing, Closed Center	
Pump Type	Variable Flow, Axial Piston	
Maximum Pump Capacity	140 L/min	36.9 gal/min
System Pressure	260 bar	3,770 psi
Auxiliary Hydraulic Pressure	240 bar	3,481 psi
Auxiliary Hydraulic Flow		
Boom Head – Intermittent	95 L/min	25 gal/min
Boom Head – Continuous	95 L/min	25 gal/min

Boom Performance

Boom Up	13.2 sec
Boom Down	11.8 sec
Tele Out	16.6 sec
Tele In	12.8 sec
Crowd Forward (Dump)	4 sec
Crowd Backward	3.9 sec
Combined	
Up and Out	29.8 sec
Down and In	24.6 sec

Axles

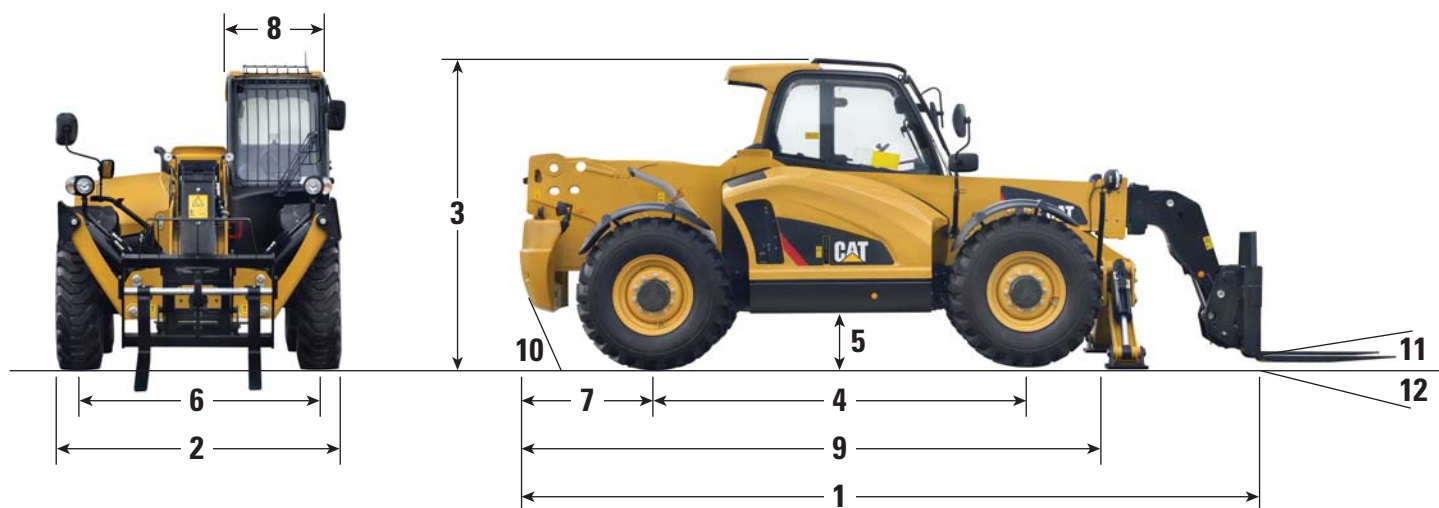
Front Axle	High bias, planetary reduction hubs with limited slip differential
Rear Axle	Open differential with planetary reduction hubs

Tires

Standard	Mitas 14.00-24 16PR Air
Options	Goodyear 14.00-24 16PR Air Goodyear 14.00-24 16PR Foam

Performance

Drawbar Pull	89.3 kN	20,075 lbf
Frame Leveling	±10	
Noise Levels		
In Cab	76 dB(A)	
External	106 dB(A)	
Off Road Towing Only	4990 kg	11,000 lb



Dimensions (All dimensions are approximate.)

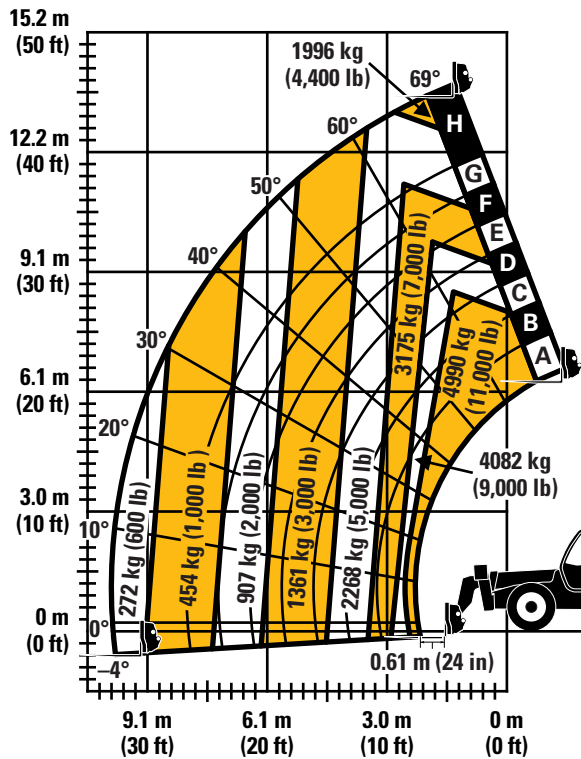
1 Overall Length to Front of Carriage	6465 mm	21.3 ft	7 Overhang	1091 mm	3.6 ft
2 Overall Width (standard tires)	2498 mm	8.2 ft	8 Cab Width	825 mm	2.7 ft
Overall Width (stabilizers down)	3104 mm	10.2 ft	9 Machine Length	6465 mm	21.3 ft
3 Overall Height (standard tires)*	2700 mm	8.8 ft	10 Departure Angle	TBD	
4 Wheelbase	3200 mm	10.5 ft	11 Maximum Fork Crowd Angle	11°	
5 Ground Clearance	450 mm	1.5 ft	12 Maximum Fork Dump Angle	112°	
6 Track	2078 mm	6.8 ft			

*Add 200 mm (7.9 in) for beacon.
Add 40 mm (1.6 in) for top guard.

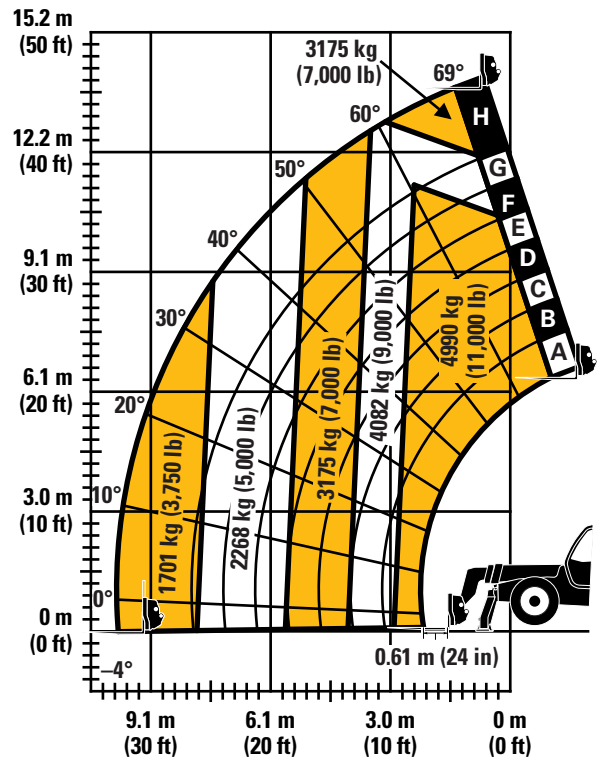
TBD = To Be Determined

Load Chart and Dimensions

TH514D Stabilizers Up



TH514D Stabilizers Down



IMPORTANT

Rated lift capacities shown are with machine equipped with carriage and pallet forks. The machine must be level on a firm surface with undamaged, properly inflated tires. Machine specifications and stability are based on rated lift capacities at specific boom angles and boom lengths. (If specifications are critical, the proposed application should be discussed with your dealer.)

DO NOT exceed rated lift capacity loads, as unstable and dangerous machine conditions will result.

DO NOT tip the machine forward to determine the allowable load.

Use only approved attachments with proper material handler model/attachment load capacity charts displayed in the operator's cab. OSHA requires all rough terrain forklift operators be trained according to OSHA 29 CFR 1910.178 (1).

Due to continuous product improvements, machine specifications and/or equipment changes may be made without prior notification. This machine meets or exceeds ANSI/ITSDF B56.6-2016 as originally manufactured for intended applications.

TH514D Telehandler

Standard and Optional Equipment *(Standard and Optional equipment may vary. Consult your Cat dealer for details.)*

	Standard	Optional		Standard	Optional
Operator Environment			Other Equipment		
Canopy, Open	✓	—	Boom Brushes	—	✓
Cab, Enclosed	—	✓	Ride Control with Boom Float	✓	—
Reversing Camera	—	✓	Single Auxiliary Service to Boom Head	✓	—
Reversing Sensors	—	✓	2 nd Auxiliary Service to Boom Head	—	✓
Large Electronic Display Screen	—	✓	Rear Hitch Mirror, Flat	—	✓
Sunscreen	—	✓	Rear Hitch Mirror, Convex	—	✓
Mechanical Suspension Seat with Seat Belt	✓	—	Tool Box	—	✓
Air Suspension Seat with Seat Belt	—	✓	Boom Safety Brace	—	✓
Heated Air Suspension Seat with Seat Belt	—	✓	Tires		
Screen Guard	—	✓	Mitas 14.00-24 16PR Air	✓	—
Roof Guard	—	✓	Goodyear 14.00-24 16PR Air	—	✓
Heater/De-mister	✓	—	Goodyear 14.00-24 16PR Foam	—	✓
Air Conditioning	—	✓	Tow Hitches		
Multi Function Joystick Controller with FNR	✓	—	Off Road Tow Hitch	✓	—
Column Mounted FNR Lever	—	✓	Quick Couplers		
Front and Rear Windscreen Wipers	—	✓	Manual Cat “IT” Interface	✓	—
Roof Wiper	—	✓	Hydraulic Cat “IT” Interface	—	✓
Mechanical Parking Brake	✓	—	• Competitive couplers are available, please consult your Cat dealer for details.		
SAHR Parking Brake	—	✓	Work Tools		
Electrical			Floating Fork Carriage	—	✓
1 × 12V 1,000 CCA Battery	✓	—	Dual Positioning Fork Carriage	—	✓
2 × 12V 815 CCA Batteries	—	✓	Side Shift Carriage	—	✓
Block Heater 110 Volt	—	✓	1 m ³ (1.3 yd ³) General Purpose Bucket	—	✓
Work Lights, 4 × Cab Mounted (2 front, 2 rear) 2 × Boom Mounted	—	✓	1.5 m ³ (1.95 yd ³) Rehandling Bucket	—	✓
Fog Lights	—	✓	Fork Rotator Carriage	—	✓
Product Link™, Version 641	—	✓	Auger	—	✓
Seven (7) Pin Trailer Service	—	✓	Concrete Mixer Bucket	—	✓
Reverse Alarm	✓	—	Material Handling Arm	—	✓
Rotating Beacon	—	✓	Truss Boom (with winch)	—	✓
			Trash Hopper	—	✓
			Pipe Grapple	—	✓
			Sweeper Collector	—	✓
			Side Tilt Carriage	—	✓
			Swing Carriage	—	✓
			Aerial Platform	—	✓
			Fork Mounted Platform	—	✓

For more complete information on Cat products, dealer services, and industry solutions, visit us on the web at www.cat.com

© 2017 Caterpillar
All rights reserved

Materials and specifications are subject to change without notice. Featured machines in photos may include additional equipment. See your Cat dealer for available options.

CAT, CATERPILLAR, SAFETY.CAT.COM, their respective logos, “Caterpillar Yellow” and the “Power Edge” trade dress, as well as corporate and product identity used herein, are trademarks of Caterpillar and may not be used without permission.

AEHQ7991 (01-2017)
(Americas North)

