



Cat[®] 903C2

COMPACT WHEEL LOADER

FEATURES:

The Cat[®] 903C2 delivers high performance with outstanding versatility. Spacious cab with joystick control keeps you comfortable throughout the work day, allowing you to get more done. Loader design delivers strength and durability with superior control.

- **Performance** – Well balanced weight and power make the 903C2 suitable for tasks in agriculture, landscaping, snow, construction, and industrial segments. Optional external counterweights increase lift capacity for demanding jobs. Two loader linkage options, standard and high lift, provide either improved capacity or improved lift height based on the application.
- **Ease of Operation** – Two independent control levers for lift/tilt and auxiliary functions provide excellent bucket feel and implement modulation.
- **Power Train** – Hydrostatic drive line features a 16 km/h (10 mph) travel speed. Axles are available with front and rear diff-lock.

- **Safety** – Reduced engine overhang lends itself to excellent rear and corner visibility, keeping the operator safe and productive to the task at hand. Improved entry/exit step and addition of grab handle to ease getting in and out of the machine.
- **Serviceability** – Fully opening rear hood allows easy access to engine compartment featuring side-by-side coolers and transparent fuel/water separator. Optional engine air pre-cleaner and radiator screen for high debris applications.
- **Work Tools** – Standard Skid Steer Loader coupler and continuous auxiliary hydraulic flow enables the 903C2 to use a large range of Cat Skid Steer Loader hydro mechanical work tools. Change tools multiple times during the day? The optional electric Skid Steer Loader style coupler makes the task easier and quicker!

Specifications

Engine

Engine Model	Cat C2.4*	
Gross Power	31 kW	42 hp
Net Power @ 2,200 rpm		
SAE J1349 Rating	30 kW	40 hp
ISO 9249 Rating	30 kW	40 hp
EEC 80/1269 Rating	30 kW	40 hp
Bore	87 mm	3.4 in
Stroke	102 mm	4.0 in
Displacement	2.4 L	147 in ³

*Engine meets U.S. EPA Tier 4 Final emission standards.

Weight

Operating Weight	4110 kg	9,060 lb
------------------	---------	----------

Buckets

Bucket Capacities	0.6-1.0 m ³	0.8-1.3 yd ³
-------------------	------------------------	-------------------------

Transmission

Travel Speed	16 km/h	10 mph
--------------	---------	--------

Hydraulic System

Main Relief	206 bar	2,988 psi
3rd Auxiliary Flow	52 L/min	14 gal/min
Hydraulic Cycle Time – Lift	4.8 seconds	
Hydraulic Cycle Time – Dump	0.8 seconds	
Hydraulic Cycle Time – Lower, Float	3.2 seconds	

Cab

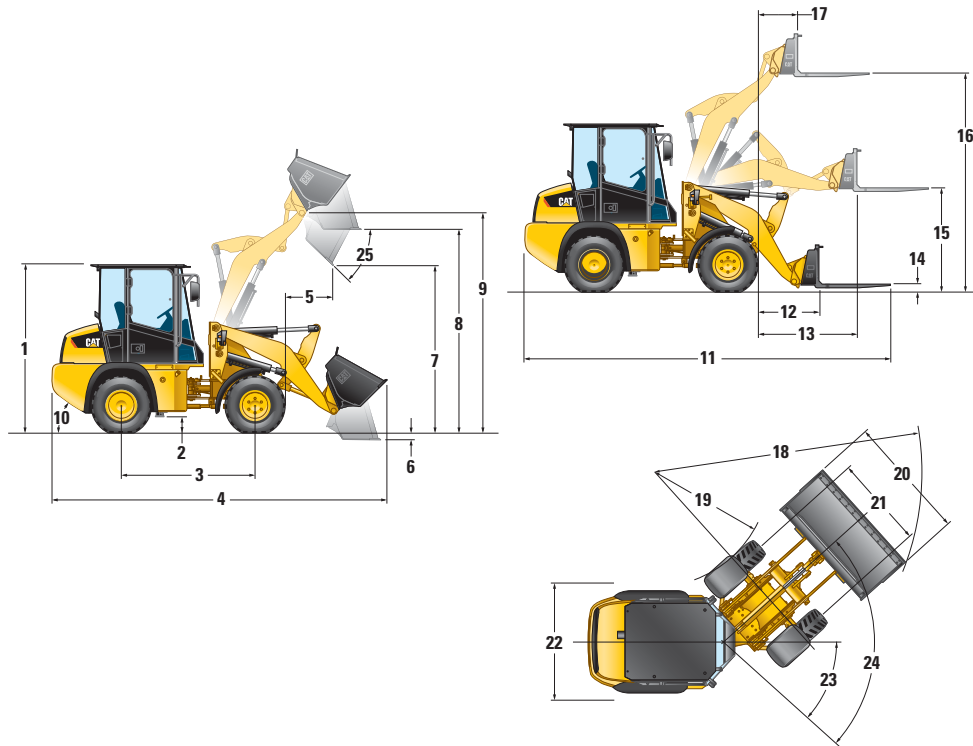
ROPS	ISO 3471:2008	
FOPS	ISO 3449:2000 Level I	

Service Refill Capacities

Cooling System	11 L	3 gal
Fuel Tank	43 L	11.4 gal
Hydraulic System	24 L	6.3 gal
Engine Oil	9 L	2.4 gal



903C2 Compact Wheel Loader



Dimensions (All dimensions are approximate.)

	Standard		High Lift	
1 Cab Height	2510 mm	8 ft 3 in	2510 mm	8 ft 3 in
2 Ground Clearance	395 mm	1 ft 4 in	395 mm	1 ft 4 in
3 Wheelbase	1800 mm	5 ft 11 in	1800 mm	5 ft 11 in
* 4 Overall Length with Bucket	4695 mm	15 ft 5 in	4860 mm	15 ft 11 in
* 5 Reach at Maximum Dump Height	875 mm	2 ft 10 in	880 mm	2 ft 11 in
6 Dig Depth	200 mm	8 in	200 mm	8 in
* 7 Maximum Dump Height	2290 mm	8 ft 0 in	2430 mm	8 ft 0 in
8 Load Over Height	2795 mm	9 ft 2 in	2940 mm	9 ft 8 in
9 Hinge Pin at Maximum Height	3080 mm	10 ft 1 in	3225 mm	10 ft 7 in
10 Departure Angle (degrees)	30°			
11 Overall Length with Forks	5175 mm	17 ft 0 in	5330 mm	17 ft 6 in
12 Reach at Level Ground	970 mm	3 ft 2 in	1130 mm	3 ft 8 in
13 Maximum Reach	1515 mm	5 ft 0 in	1635 mm	5 ft 4 in
14 Fork Depth Above Ground	40 mm	2 in	40 mm	2 in
15 Fork Height at Maximum Reach	1415 mm	4 ft 8 in	1415 mm	4 ft 8 in
16 Maximum Fork Height	3000 mm	10 ft -2 in	3140 mm	10 ft 4 in
17 Fork Reach at Maximum Height	750 mm	2 ft 6 in	755 mm	2 ft 6 in
* 18 Turning Radius Over Bucket	3940 mm	13 ft -1 in	4020 mm	13 ft 2 in
** 19 Turning Radius Inside Tire	1655 mm	5 ft 5 in	1655 mm	5 ft 5 in
* 20 Width Over Bucket	1770 mm	5 ft 10 in	1770 mm	5 ft 10 in
21 Tire Gauge	1314 mm	4 ft 4 in	1314 mm	4 ft 4 in
** 22 Machine Width	1708 mm	5 ft 7 in	1708 mm	5 ft 7 in
23 Articulation Angle	40°			
24 Steering Angle – Left/Right	80°			
25 Dump Angle at Maximum Height	40°			

*Vary with bucket size.

**Vary with tire size.

Dimensions listed are based on the machine configured with cab with air conditioning, quick coupler, general purpose bucket or 1067 mm (42 in) forks, 75 kg (165 lb) operator and 33 × 15.5-16.5, 12PR tires.

Operating Specifications*

	Standard Lift		High Lift	
	33 × 15.5-16.5, 12PR			
Tire Size	33 × 15.5-16.5, 12PR			
Rated Bucket Capacity	0.6 m ³	0.8 yd ³	0.6 m ³	0.8 yd ³
Breakout Force	23.0 kN	5,170 lbf	23.2 kN	5,170 lbf
Operating Weight	4110 kg	9,060 lb	4130 kg	9,105 lb
Rated Operating Load @ Full Turn, Bucket	975 kg	2,150 lb	850 kg	1,875 lb
Straight Tipping Load, Bucket	2300 kg	5,070 lb	2040 kg	4,500 lb
Full Turn Static Tipping Load, Bucket	1950 kg	4,300 lb	1705 kg	3,760 lb
Rackback, Transport Position	52°			
Rated Operating Load @ Full Turn, Forks (EN 474-3:2006, Firm and Level Ground, 500 mm (20 in) Load Center) (80% of FTSTL)	1185 kg	2,610 lb	1095 kg	2,410 lb
Rated Operating Load @ Full Turn, Forks (EN 474-3:2006, Rough Terrain, 500 mm (20 in) Load Center) (60% of FTSTL)	890 kg	1,960 lb	820 kg	1,805 lb

With Additional Counterweight

Operating Weight	4280 kg	9,435 lb	4300 kg	9,480 lb
Rated Operating Load @ Full Turn, Bucket	1045 kg	2,305 lb	920 kg	2,030 lb
Straight Tipping Load, Bucket	2470 kg	5,445 lb	2195 kg	4,840 lb
Full Turn Static Tipping Load, Bucket	2090 kg	4,610 lb	1840 kg	4,060 lb
Rackback, Transport Position	52°			
Rated Operating Load @ Full Turn, Forks (EN 474-3:2006, Firm and Level Ground, 500 mm (20 in) Load Center) (80% of FTSTL)	1270 kg	2,800 lb	1175 kg	2,590 lb
Rated Operating Load @ Full Turn, Forks (EN 474-3:2006, Rough Terrain, 500 mm (20 in) Load Center) (60% of FTSTL)	955 kg	2,105 lb	880 kg	1,940 lb

*Operating Specifications shown are based on machine equipped with enclosed ROPS cab with air conditioning, standard linkage, quick coupler, 75 kg (165 lb) operator and general purpose bucket (GP) unless otherwise noted.

Maximum Material Densities

Based on ISO 7546: 1983 and rated operating loads at full turn and standard linkage, without additional counterweight

Bucket Type	General Purpose		Light Material	
	General Purpose	General Purpose	Light Material	Light Material
Rated Capacity	0.6 m ³	0.8 yd ³	1.0 m ³	1.3 yd ³
Dump Height	2290 mm	90 in	2160 mm	85 in
Maximum Material Density	1540 kg/m ³	2,545 lb/yd ³	875 kg/m ³	1,480 lb/yd ³
Bucket Width	1770 mm	70 in	1880 mm	74 in

903C2 Compact Wheel Loader

STANDARD EQUIPMENT

POWER TRAIN

- Air cleaner, two stage with visual indicator
- Cat C2.4 engine
 - Meets U.S. EPA Tier 4 Final emission standards
- Closed circuit breather
- Cold start plugs
- Electrical fuel priming pump
- Extended life coolant protects to -37°C (-34°F)
- Frame mounted heavy duty axles with outboard planetary reduction
- Maintenance free, sealed for life, prop shaft and universal joints
- Transmission, 16 km/h (10 mph)

ELECTRICAL

- 12 volt direct electric starting
- Alternator, 70A
- Battery disconnect switch
- Cab mounted fuse panel
- Ignition key start/stop switch
- Maintenance free, sealed for life, 650 CCA heavy duty battery

OPERATOR ENVIRONMENT

- Cup holder
- Digital service hour meter
- Engine coolant temperature gauge
- Fuel level gauge
- Heavy duty, easy clean floor mat

OPTIONAL EQUIPMENT

- Air conditioning/heater
- Alternator, 90 amp for air conditioning
- Antifreeze/coolant, extended life, protects to -50°C (-58°F)
- Beacon ready
- Cab
 - Open
 - Enclosed
- Counterweight: 160 kg (350 lb)
- Differential lock, front and rear axles
- Eco drain, engine oil
- Electric quick coupler, skid steer loader compatible
- Engine air precleaner
- Engine block heater 120V (dealer installed)
- Fenders
 - Standard for use with 304 mm (12 in) tires
 - Wide for use with 393 mm (15.5 in) tires
- Hydraulic auxiliary lines with quick disconnects

- Operator warning system indicators:
 - DPF monitor
 - Parking brake applied
 - Hydraulic oil temperature
 - Engine oil pressure
 - Service brake pressure
 - Hydraulic filter bypass
- Seat
 - Static, vinyl with 51 mm (2 in) retractable seat belt
- Two external mirrors – knock back

OTHER STANDARD EQUIPMENT

- 3rd valve auxiliary hydraulics with continuous flow detent, standard flow
- Engine enclosure – lockable
- Guarded front headlight
- Hydraulic oil level sight gauge
- Lift arm safety brace
- Loader arm float function
- Lockable fuel filler cap
- Manual quick coupler, skid steer loader compatible
- Parking brake (secondary brake)
- Quick release fuel filter/water separator
- Reversing light
- Self-canceling direction indicators
- Work tool return to dig
- Z-bar linkage

- Linkage
 - Standard lift
 - High lift
- Radiator debris screen
- Radio Ready or AM/FM radio
- Seats
 - Mechanical suspension, vinyl with 51 mm (2 in) seat belt
 - Mechanical suspension, vinyl with 75 mm (3 in) seat belt
 - Mechanical suspension, fabric with 51 mm (2 in) seat belt
 - Mechanical suspension, fabric with 75 mm (3 in) seat belt
- Tires
 - 12-16.5 10PR
 - Flotation 33-15.5 \times 16.5
 - Flexport™ 33 \times 6 \times 11
- Working lights, front and rear

WORK TOOLS

- For all work tool options, consult your Cat dealer.

For more complete information on Cat products, dealer services, and industry solutions, visit us on the web at www.cat.com

AEHQ7648 (09-2015)

© 2015 Caterpillar
All rights reserved

Materials and specifications are subject to change without notice. Featured machines in photos may include additional equipment. See your Cat dealer for available options.

CAT, CATERPILLAR, SAFETY.CAT.COM, their respective logos, "Caterpillar Yellow" and the "Power Edge" trade dress, as well as corporate and product identity used herein, are trademarks of Caterpillar and may not be used without permission.

